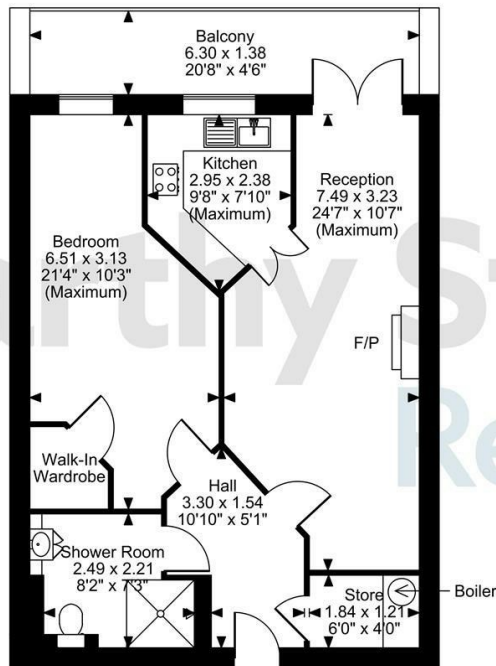
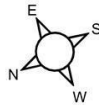


Williamson Court, Greaves Road, Lancaster
Approximate Gross Internal Area
607 Sq Ft/56 Sq M
Balcony external area = 96 Sq Ft/9 Sq M



Fourth Floor

FOR ILLUSTRATIVE PURPOSES ONLY - NOT TO SCALE
The position & size of doors, windows, appliances and other features are approximate only.
© ehous. Unauthorised reproduction prohibited. Drawing ref. dig/8631809/RDG

Council Tax Band: B



Energy Efficiency Rating		
	Current	Potential
Very energy efficient - lower running costs		
(92 plus) A		
(81-91) B	84	84
(69-80) C		
(55-68) D		
(39-54) E		
(21-38) F		
(1-20) G		
Not energy efficient - higher running costs		
England & Wales	EU Directive 2002/91/EC	

This floor plan is not drawn to scale and is for illustrative purposes only. Any measurements, floor areas (including any total floor area), openings and orientation are approximate and for guidance only. McCarthy Stone Resales do not take liability for any error, omission or misstatement. All parties must rely on their own inspections. It should not be assumed that any furniture or fittings contained in the photographs are included in any sale. All details referring to time and distances to localities are approximate. Details regarding any common charges and other applicable fees are provided by the seller and should not be relied on without verification and further checks made through a solicitor/conveyancer. Please contact the Property Consultant for further information that Appliances (including central heating) have not been tested, therefore it cannot be assumed that they are in good working order. All interested parties are advised to check availability and make an appointment before travelling to view the property to avoid disappointment or wasted time or travel expenses. The details contained within this brochure are for information purposes only and do not form part of any agreement. All purchases will be subject to contract terms. © All artwork (photos and floorplans) and written content are the sole property and copyright of McCarthy & Stone Resales Limited and are legally protected by UK & International copyright laws. Under no circumstance may you download, reproduce, publish or distribute any content for commercial purposes, without prior written permission from McCarthy Stone Resales. Unauthorised duplication or usage for commercial purposes is prohibited by the Copyright law and will be prosecuted.



53 Williamson Court

Greaves Road, Lancaster, LA1 4AR



Asking price £45,000 Leasehold

A WELL PRESENTED ONE BEDROOM FOURTH FLOOR APARTMENT WITH BALCONY,
SITUATED WITHIN A MCCARTHY AND STONE RETIREMENT LIVING PLUS
DEVELOPMENT.

Call us on 0345 556 4104 to find out more.

resales@mccarthyandstone.co.uk | mccarthyandstoneresales.co.uk

Greaves Road, Lancaster, Lancashire LA1

4AR

Williamson Court

Williamson Court was built by McCarthy & Stone and designed specifically for assisted retirement living for the over 70's. The development consists of one and two-bedroom retirement apartments with design features to make day-to-day living easier. This includes beautifully equipped kitchens with waist height ovens to minimise bending, wet room with shower for ease of use, simple lever taps and slip resistant flooring. As well as the privacy of your own apartment, there's the opportunity to lead a full and active social life. You can call into the homeowners' lounge whenever you feel like company, and it's a lovely place to meet up with friends or join in the many activities organised by homeowners and the Estate Management team. Open every day, our table service restaurant serves tasty and nutritious lunches for our homeowners and their friends and family, at a very reasonable price. All the food is freshly prepared and we can cater for special dietary requirements. Williamson Court also benefits from landscaped gardens and a guest suite for visitors who wish to stay (additional charges apply). For peace of mind, there is an Estate Manager on site and 24-hour emergency call system provided via a personal pendant alarm and with call points in all rooms.

Local Area

Located in the North West, Lancaster is conveniently situated only a couple of miles from the coast nestled between Manchester and the Lake District. Set amidst spectacular scenery, the city offers easy access to the national road network and boasts strong rail links to the rest of the country. A farmer's market takes place every second Wednesday at Market Square and offers an array of local produce available for purchase. Lancaster's Norman Castle watches over the city and its sturdy walls enclose both a courthouse and a prison, the latter of which was closed in 2011. Other local heritage attractions are the Priory and Parish Church, both famed for their unique architecture. Take a trip to Morecambe Bay and watch waders march up the shore or spot seals lazing in the sea. In addition to its unique wildlife, the area also boasts spectacular seascape views.



Entrance Hall

Your front door with spy hole leads to the large entrance hall where there are illuminated light switches, a smoke detector, the apartment's security door entry system and the 24-hour emergency response pull cord system are all situated in the hall. There is a door to a walk-in storage cupboard/airing cupboard and further doors lead to the lounge, bedroom and wetroom.

Living room

This delightful living area benefits from double opening doors opening out to a balcony. There is ample space for dining with a wall mounted electric fire which creates a focal point to the room and an electric storage heater. There are TV and telephone points and a Sky/Sky+ connection point. Two ceiling lights, fitted carpets, raised electric power sockets. Partially glazed double doors lead onto the separate kitchen.

Kitchen

A modern fitted kitchen with a range of wall and base level units and drawers with a granite effect work surface over and under pelmet lighting. A stainless steel sink and drainer with mono lever tap sits under a window. Integrated appliances include a waist height oven, ceramic hob with cooker hood over and an integral fridge freezer. Ceramic tiled floor and central ceiling spot lights.

Bedroom

The double bedroom benefits from a walk-in wardrobe housing rails and shelving. A two ceiling light points, raised power points, TV and phone point and a wall mounted electric heater.

Wetroom

Fully fitted with suite comprising of level access shower, WC, vanity unit with wash basin and sensor illuminated mirror above. Shaving point, electric heated towel rail, extractor fan, emergency pull cord and anti-slip flooring.

Service Charge (Breakdown)

- Cleaning of communal windows
- Water rates for communal areas and apartments
- Electricity, heating, lighting and power to communal areas
- Window Cleaning (outside only)
- 24-hour emergency call system
- Upkeep of gardens and grounds



1 bed | £45,000

- Repairs and maintenance to the interior and exterior communal areas
- Contingency fund including internal and external redecoration of communal areas
- Buildings insurance
- One hour of domestic support per week is included in the service charge
- Care staff on-site 24-hours a day
- Running of the on-site restaurant
- Intruder alarm system

The Service charge does not cover external costs such as your Council Tax, electricity or TV. To find out more about service charges please contact your Property Consultant or Estates Manager.

Service charge£9,651.83 per annum for financial year end 30 June 2026.

Car Parking Permit Scheme (subject to availability)

Parking is by allocated space subject to availability. The fee is £250 per annum and are available on a first come, first served basis. Please check with the House Manager on site for availability.

Leasehold Information

Lease length: 999 years from 2016
Ground rent: £435 per annum
Ground rent review: Jun-31
Managed by: Your Life Management Services

Additional Information & Services

- Full Fibre Broadband available
- Mains water and electricity
- Electric room heating
- Mains drainage

