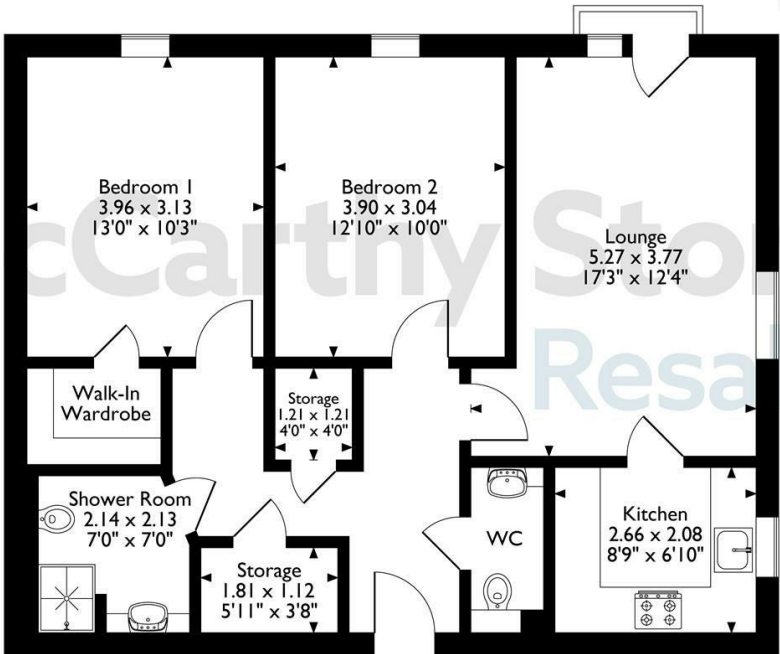


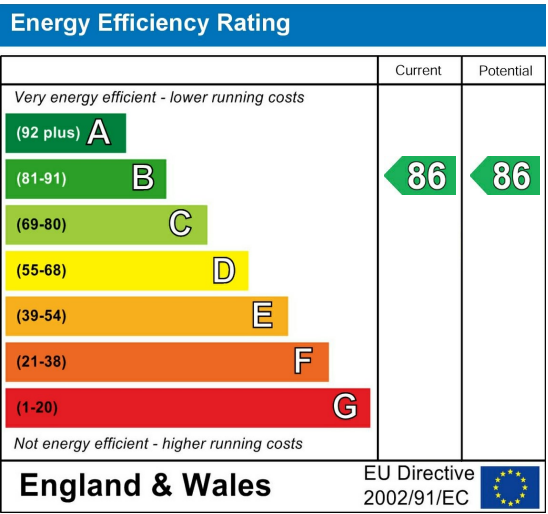
Elizabeth House, Flat 38, St. Giles Mews, Milton Keynes
Approximate Gross Internal Area
73 Sq M/786 Sq Ft



First Floor

The position & size of doors, windows, appliances and other features are approximate only.
© ehouse. Unauthorised reproduction prohibited. Drawing ref. dig/B657850/DST.

Council Tax Band: C



38 Elizabeth House

St. Giles Mews, Milton Keynes, MK11 1HT



Asking price £380,000 Leasehold

Bright and airy, two bedroom retirement apartment benefitting from a JULIET BALCONY over looking the COURTYARD GARDENS. Modern kitchen with BUILT IN APPLIANCES, two double bedrooms, a CONTEMPORARY WET ROOM and CLOAKROOM completes this lovely apartment. ALLOCATED CAR PARKING INCLUDED. The development offers EXCELLENT COMMUNAL FACILITIES including landscaped gardens, dining room, function room and communal lounge where SOCIAL EVENTS take place.

Call us on 0345 556 4104 to find out more.

resales@mccarthyandstone.co.uk | mccarthyandstoneresales.co.uk

This floor plan is not drawn to scale and is for illustrative purposes only. Any measurements, floor areas (including any total floor area), openings and orientation are approximate and for guidance only. McCarthy Stone Resales do not take liability for any error, omission or misstatement. All parties must rely on their own inspections. It should not be assumed that any furniture or fittings contained in the photographs are included in any sale. All details referring to time and distances to localities are approximate. Details regarding any common charges and other applicable fees are provided by the seller and should not be relied on without verification and further checks made through a solicitor/conveyancer. Please contact the Property Consultant for further information that Appliances (including central heating) have not been tested, therefore it cannot be assumed that they are in good working order. All interested parties are advised to check availability and make an appointment before travelling to view the property to avoid disappointment or wasted time or travel expenses. The details contained within this brochure are for information purposes only and do not form part of any agreement. All purchases will be subject to contract terms. © All artwork (photos and floorplans) and written content are the sole property and copyright of McCarthy & Stone Resales Limited and are legally protected by UK & International copyright laws. Under no circumstance may you download, reproduce, publish or distribute any content for commercial purposes, without prior written permission from McCarthy Stone Resales. Unauthorised duplication or usage for commercial purposes is prohibited by the Copyright law and will be prosecuted.



Elizabeth House, St. Giles Mews, Stony Stratford, Milton Keynes, MK11 1HT

Elizabeth House

Elizabeth House is located in the historic Buckinghamshire market town of Stony Stratford. This fine collection of age-exclusive apartments is a must-see for those seeking retirement living in a fantastic location. The complex includes one and two bedroom properties, which are spacious, stylish, and offer the benefits of Retirement Living PLUS. Each apartment at Elizabeth House includes a large bedroom, spacious living area and high quality kitchen, bathroom and underfloor heating. An Estates Manager is on hand to manage the day to day running of the development and attend to any queries you may have. Within the service charge homeowners are allocated 1 hour of domestic assistance per week, however, additional hours can be arranged by prior appointment. The development has a great community spirit with regular activities, annual events and day trips. For your reassurance the development has 24-Hour on-site staffing, secure camera entry systems and 24-Hour emergency call system provided by a personal pendant with static call points in bathrooms and main bedroom. Your home at Elizabeth House offers great comfort and security, allowing you to enjoy an independent and social retirement. Away from the privacy of your apartment, Elizabeth House features a selection of social areas, including the homeowners lounge and gardens. There is also a fantastic restaurant serving 3-course lunches every day of the year, complete with table service. When your friends and family wish to visit, they too can enjoy comfort and privacy in the guest suite (£25 per night - subject to availability) It is a condition of purchase that residents must meet the age requirement of 70 years or of age or over.

Local Area

Stony Stratford is a small market town with a big history alongside bags of style, charm and character making it the perfect location for your new home. This friendly and flourishing community dates back to Roman times and has had a market charter since 1194. Today there's a good selection of local amenities in Stony Stratford including shops, a doctor, dentist, post office and pharmacy all a short walk from home. You can also visit the regular market and farmers' market, plus there's the rare privilege of free parking. The inns and restaurants are numerous and come with some excellent stories including many Dick Turpin tales and claiming the origin of the phrase "cock and bull story". Alternatively head into Milton Keynes, just over 5 miles away by road from Elizabeth House. One of the original new towns, Milton Keynes is a thriving centre for culture with a first-class theatre, galleries and museums plus plenty of choices for shopping and

eating out. If you enjoy spending time in the fresh air, the River Great Ouse and the Ouse Valley Park meander all around Stony Stratford offering miles of riverside walks and picturesque spots to watch the world go by. Step back in time with an interesting day out at Bletchley Park, the home of the World War II Enigma machines and the codebreakers. Once one of the best kept secrets in the country, Bletchley Park is now sharing its enthralling story with visitors. Alternatively, visit Stowe Gardens, about 10 miles away, to admire the scale and grandeur of this home, once owned by one of the most powerful families in Georgian England. There is shopping, history, entertainment and leisure in the idyllic market town of Buckingham less than 9 miles away; or try your luck at the recently refurbished Towcester Racecourse where both horse and greyhound racing is offered.

Entrance Hall

Front door with spy hole leads to the large entrance hall - the 24-hour emergency response pull cord system and apartment secure entry system are situated in the hall. Two walk-in storage/airing cupboards are accessed from the hall. Illuminated light switches, smoke detector, Doors lead to the living room, bedrooms, wet room and guest cloakroom.

Living Room

Dual aspect living room benefitting from a double glazed door opening inwards revealing a Juliet balcony with courtyard views. Additional window to the side makes this living room bright and airy.. There's ample space for a dining table. TV and telephone points, Sky/Sky Q connection point. Fitted carpets, two ceiling lights, raised electric power sockets. Partially glazed door leads onto a separate kitchen.

Kitchen

The spacious kitchen is fitted with a range of wall, drawer and base units, with modern roll top work surfaces over. Inset Bosch electric oven and microwave, stainless steel sink unit with mixer tap and auto opening window over. Over counter and under pelmet mood lighting, ceiling spotlights. Four ring electric Bosch hob with glass splash back and extractor hood over. Recessed integral fridge freezer, dishwasher. Floor tiling ventilation system

Principle Bedroom

A spacious, bright and airy room benefits from a large double glazed window with courtyard views. Raised sockets, TV and telephone points. Walk in wardrobe with hanging rails and shelving. Fitted carpets and light fittings.

2 bed | £380,000

Shower Room

Fully fitted wet room with shower and curtain. Low level WC, vanity unit with wash basin with cupboards beneath and fitted mirror fronted cabinet. Part tiling to walls, wall mounted chrome towel radiator, ventilation system, shaving point and down lighting. Slip resistant flooring.

Bedroom Two

Double room that would also be perfect for use as a dining room, study or hobby room. Double glazed window with court yard views. Raised sockets, fitted carpets and light fittings.

Guest Cloakroom

Fully fitted suite comprising WC, vanity unit with wash basin and illuminated mirror over. Half height wall tiling, ceiling spotlights, slip resistant flooring.

Allocated Car Parking

The apartment has an allocated car parking space within the private car park.

Service Charge

- Onsite Estate Manager and team
- 24-hour emergency call system
- Cleaning of communal windows
- Water rates for communal areas and apartments
- Electricity, heating, lighting and power to communal areas
- Upkeep of gardens and grounds
- Repairs and maintenance to the interior and exterior communal areas
- Contingency fund including internal and external redecoration of communal areas
- Buildings insurance

The service charge does not cover external costs such as your Council Tax, electricity or TV. To find out more about service charges please contact your Property Consultant or Estate Manager.

Annual Service Charge £14,352.92 for financial year ending 30/6/2026

Ground Rent

Ground rent: £510 per annum
Ground rent review: 1st June 2032

Lease Information

999 Years from 1st June 2018

Moving Made Easy & Additional Services

Moving is a huge step, but don't let that hold you back. We have a range of services to help your move go smoothly, including:

- FREE Entitlements Advice to help you find out what benefits you may be entitled to.
- Part Exchange service to help you move without the hassle of having to sell your own home.
- Removal Services that can help you declutter and move you in to your new home.
- Conveyancing specialists who are experienced with sales and purchases of McCarthy Stone retirement properties.

FOR MORE INFORMATION CHECK OUR WEBPAGE ADDITIONAL SERVICES OR SPEAK WITH OUR PROPERTY CONSULTANT

- Full Fibre Broadband available
- Mains water and electricity
- Electric room heating
- Mains drainage

