



## Flat 3, Dom Lodge, Broadhurst Gardens

, London, NW6 3QT

£925,000

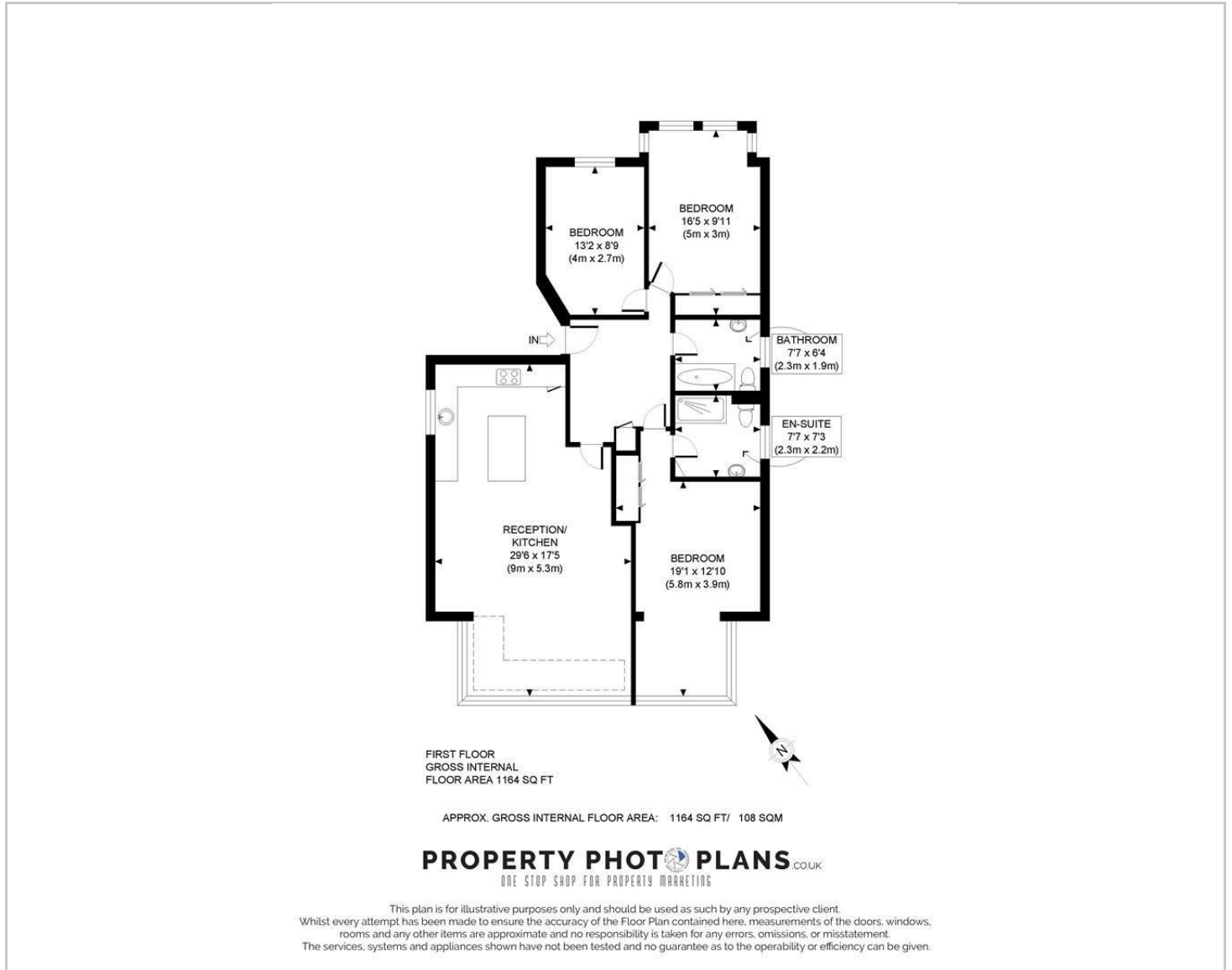


A well-presented three-bedroom first-floor apartment with lift access, ideally located at the Finchley Road end of Broadhurst Gardens in South Hampstead. The apartment offers a generous reception room with wood flooring and a modern open-plan, fully fitted kitchen. The principal bedroom benefits from an en-suite bathroom, while two further double bedrooms are served by a contemporary family bathroom.

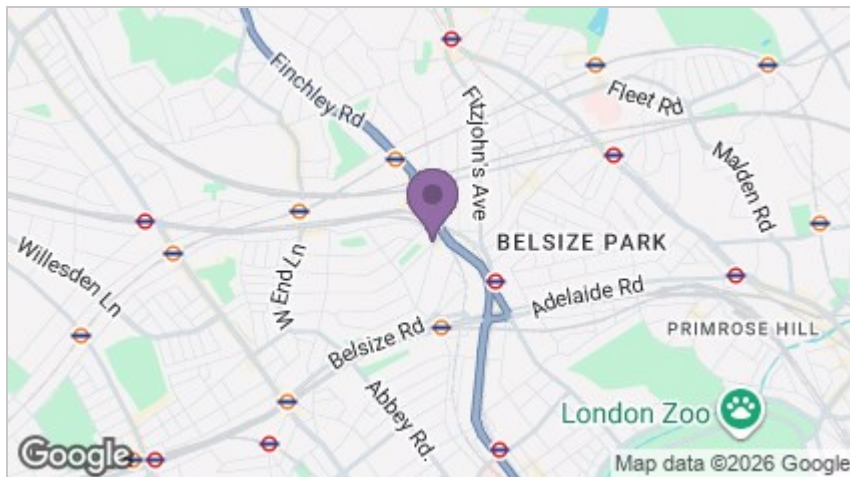
Measuring approximately 1,164 sq ft (108 sq m), the property provides well-proportioned accommodation throughout. Conveniently positioned close to the shops, cafés and excellent transport links of Finchley Road, this home offers comfortable living in a highly sought-after North West London location.



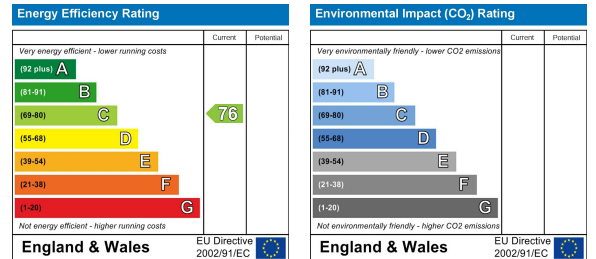
# Floor Plans



# Area Map



# Energy Efficiency Graph



These particulars, whilst believed to be accurate are set out as a general outline only for guidance and do not constitute any part of an offer or contract. Intending purchasers should not rely on them as statements of representation of fact, but must satisfy themselves by inspection or otherwise as to their accuracy. No person in this firm's employment has the authority to make or give any representation or warranty in respect of the property.



**Living Residential Estate Agents** | 18 Fortune Green Road, London, NW6 1DH

020 7435 6066 | 01923 954884 | enquiries@livingresidential.com | www.livingresidential.com

Living Residential Ltd. Reg No. 4759344. Registered Office Address: 170 Finchley Road, Hampstead, London, NW3 6BP. Registered England and Wales.