



PROPERTY  
SERVICES  
LIMITED



## 2 Brunswick Road Earlsdon, Coventry, CV1 3EX

£800 Per Calendar Month



Welcome to Earlsdon's Classic Chic Lux-Suites  
Taking Co-Living to the Next Level!

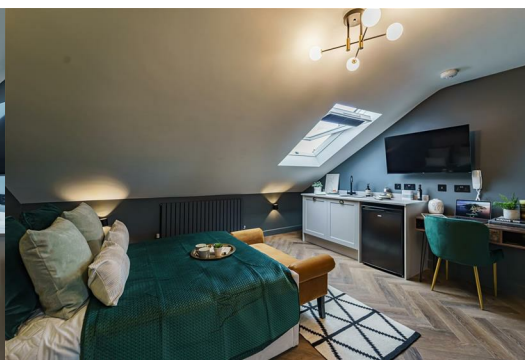
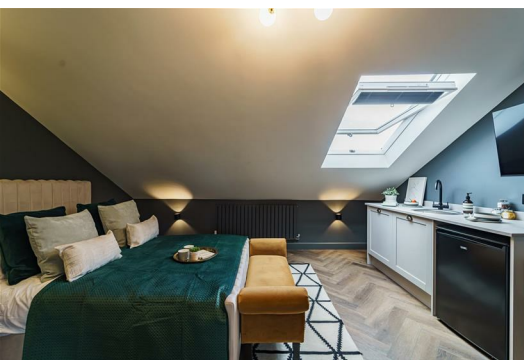
Situated in the heart of Earlsdon, these luxurious co-living suites offer the perfect blend of comfort and convenience — all within walking distance to Coventry City Centre and the train station.

ALL Bills Included | £800 PCM | Zero Deposit Scheme Available  
Available from 24th November 2025

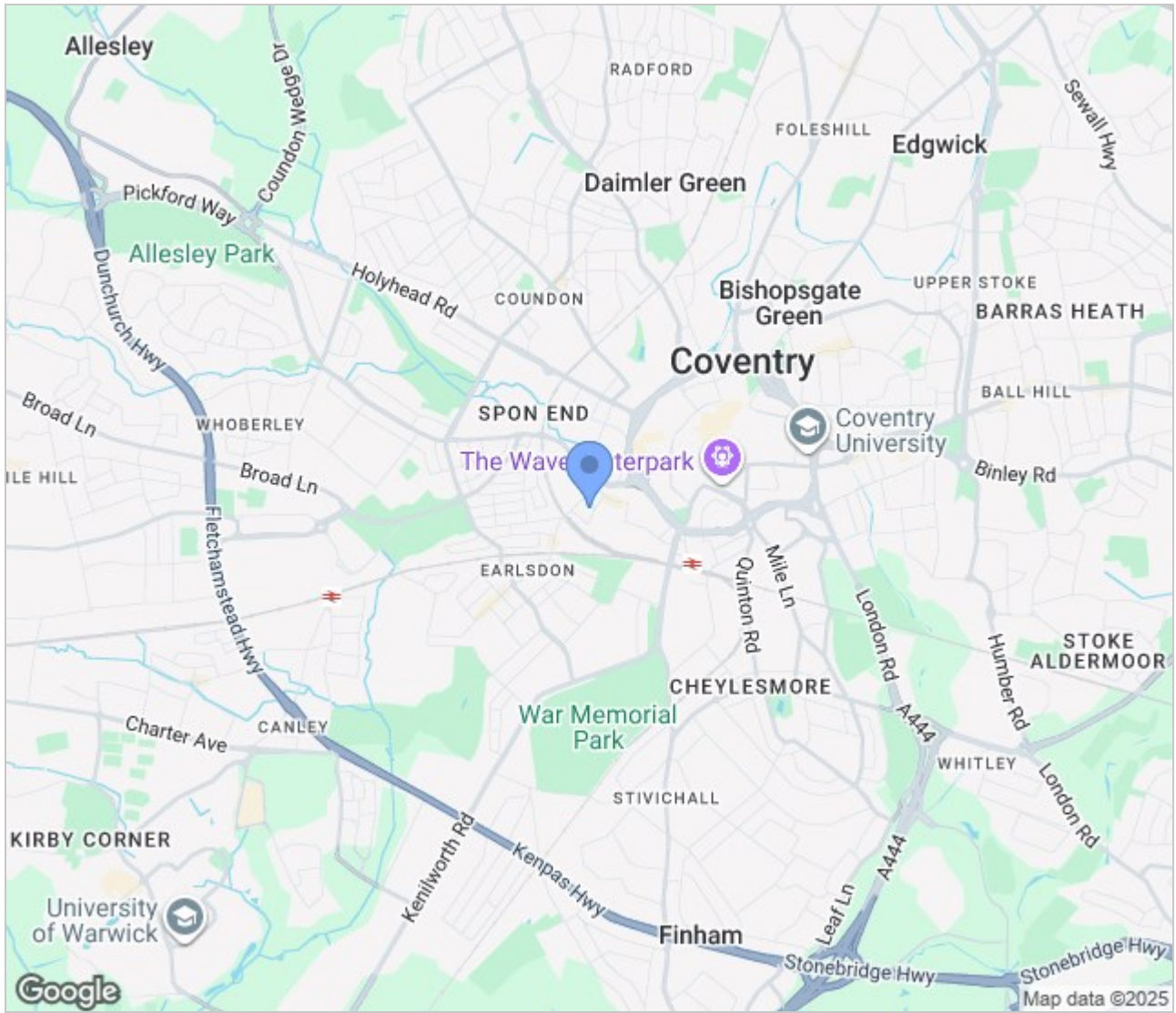
The Lux-Suite:

Designed to maximise both style and space, each suite features a smart open-plan layout with a subtle divide between the living and sleeping areas.

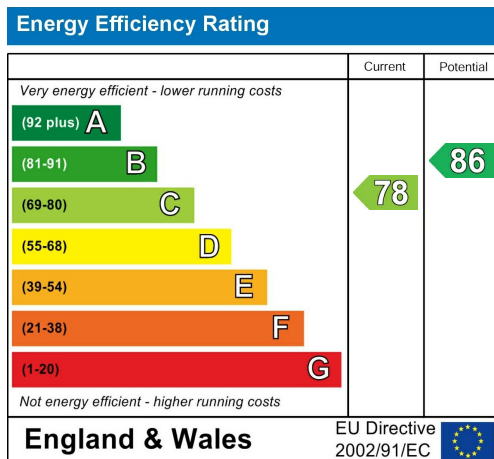
- \*Stylishly Furnished Bed Area
- \*Desk Area – Perfect for Working or Studying
- \*Compact Kitchenette: Microwave, Sink, Under-Counter Fridge
- \*Modern Shower Room with Elegant Tiling, Spacious Shower, Sink & WC



## Area Map



## Energy Efficiency Graph



These particulars, whilst believed to be accurate are set out as a general outline only for guidance and do not constitute any part of an offer or contract. Intending purchasers should not rely on them as statements of representation of fact, but must satisfy themselves by inspection or otherwise as to their accuracy. No person in this firm's employment has the authority to make or give any representation or warranty in respect of the property.

GLB Property Services Ltd  
9 Hay Lane  
Coventry, CV1 5RJ

T. 02476 433416

[info@glbpropertyservices.com](mailto:info@glbpropertyservices.com)  
[www.glbpropertyservices.com](http://www.glbpropertyservices.com)

