



PROPERTY
SERVICES
LIMITED



64 Melbourne Road Earlsdon, Coventry, CV5 6JP

£1,400 Per Calendar Month



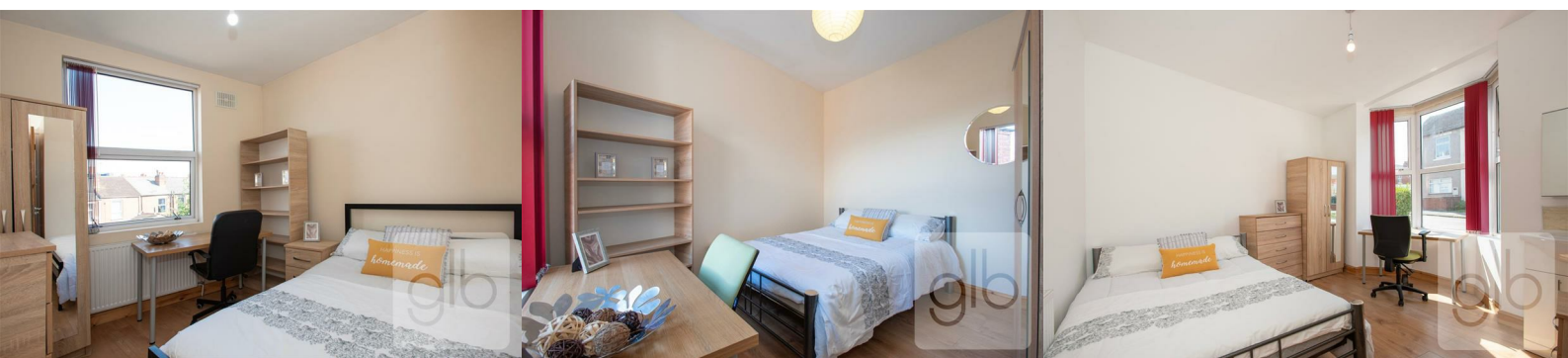
GLB Are Pleased To Present This Ideal 4 Bedroom Property Available August 2025 In The Earlsdon Area – Ideal Location For Both Warwick & Coventry University, As Well As Earlsdon High Street Which Is Popular For Its Restaurants, Bars & Shops

The property briefly comprises of:

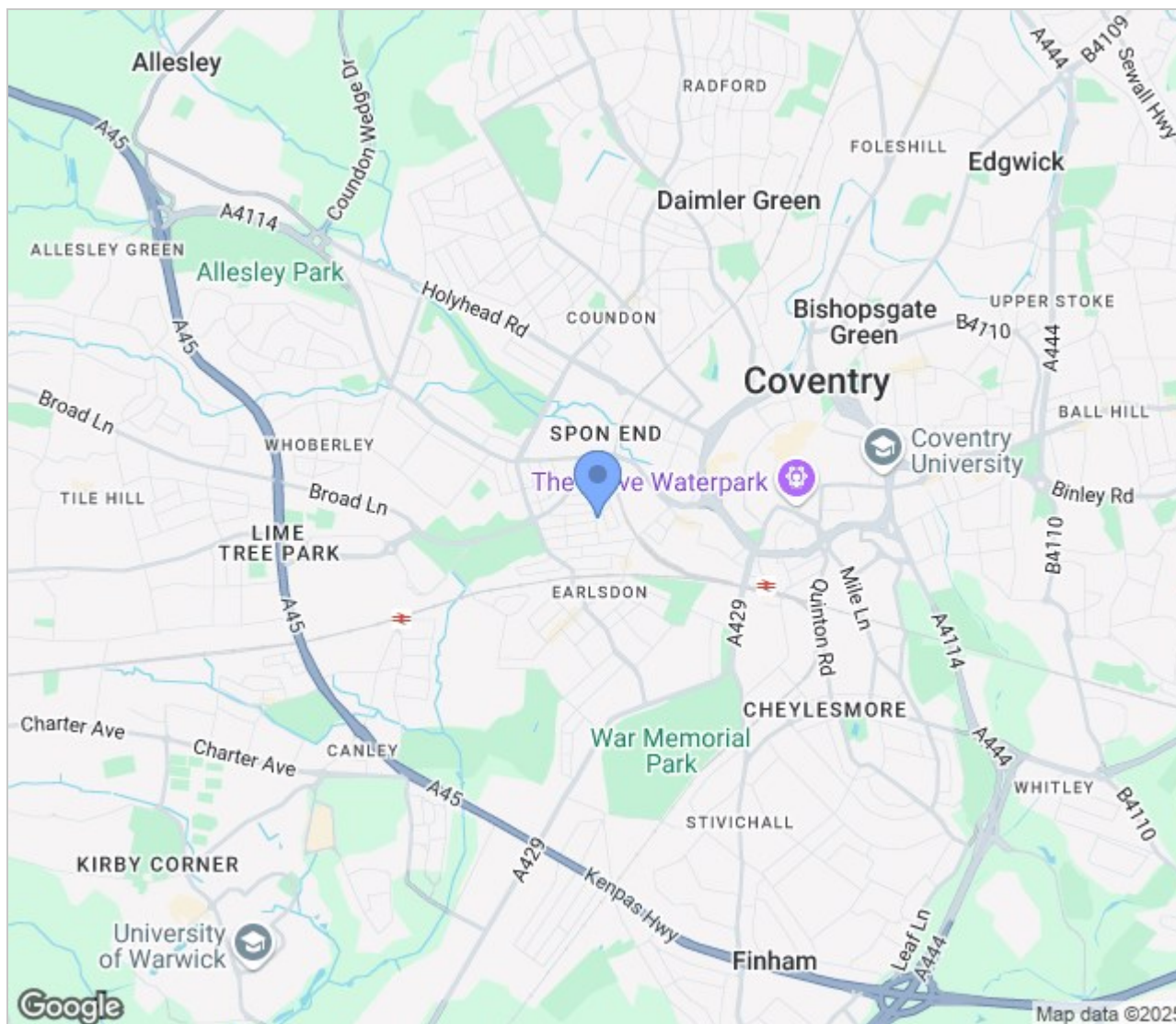
- Modern kitchen including white goods & dining table with chairs
- Spacious Lounge with leather sofas
- 2 Shower rooms on the first floor
- Wooden flooring throughout
- 4 Double Bedrooms
- Garden to the rear of the property
- Furnished to suit your studies
- On street parking
- Gas Central Heating

£1,400.00 per calendar month. Excluding Bills, except Internet, this is included in the rent

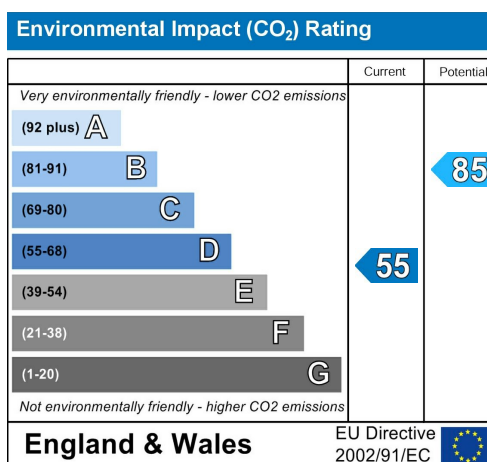
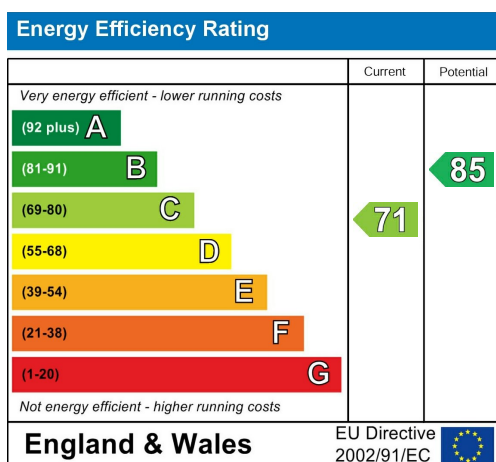
Council tax band B



Area Map



Energy Efficiency Graph



These particulars, whilst believed to be accurate are set out as a general outline only for guidance and do not constitute any part of an offer or contract. Intending purchasers should not rely on them as statements of representation of fact, but must satisfy themselves by inspection or otherwise as to their accuracy. No person in this firm's employment has the authority to make or give any representation or warranty in respect of the property.

GLB Property Services Ltd
9 Hay Lane
Coventry, CV1 5RJ

T. 02476 433416

info@glbpropertyservices.com
www.glbpropertyservices.com

