



PROPERTY  
SERVICES  
LIMITED

186 Albany Road  
Earlsdon, Coventry, CV5 6NG

£825 Per Calendar Month



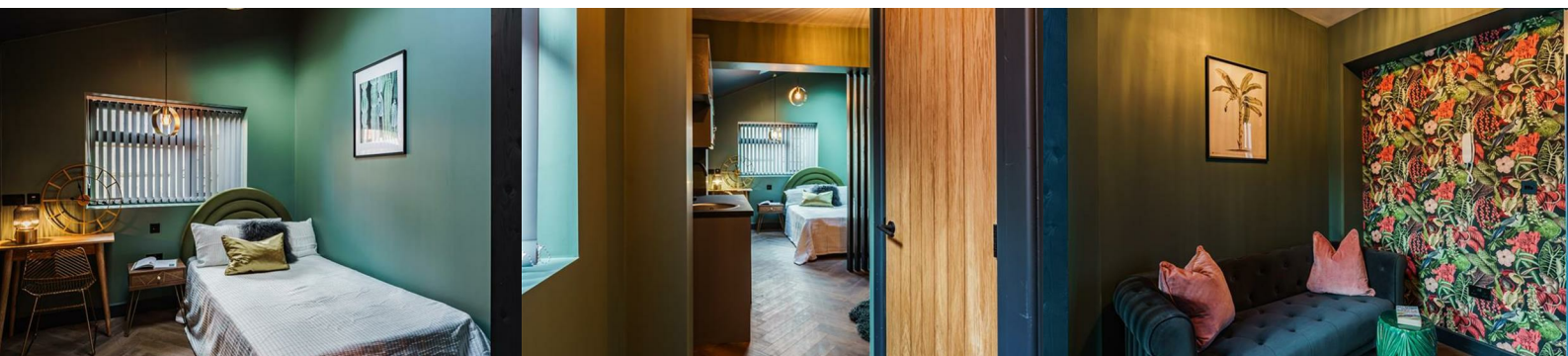
Stunning Lux-Suites Available In The Earlsdon Area of Coventry...Fantastic Location Being Right In The Heart of Earlsdon, Walking Distance To The City Centre & Train Station. Available Immediately & Including Bills!

These flamboyant art deco suites are the latest hype for the perfect co-living experience...providing the perfect environment for singles or couples looking for accommodation that is both private (but with social areas too!), economical and designed with all your requirements in mind.

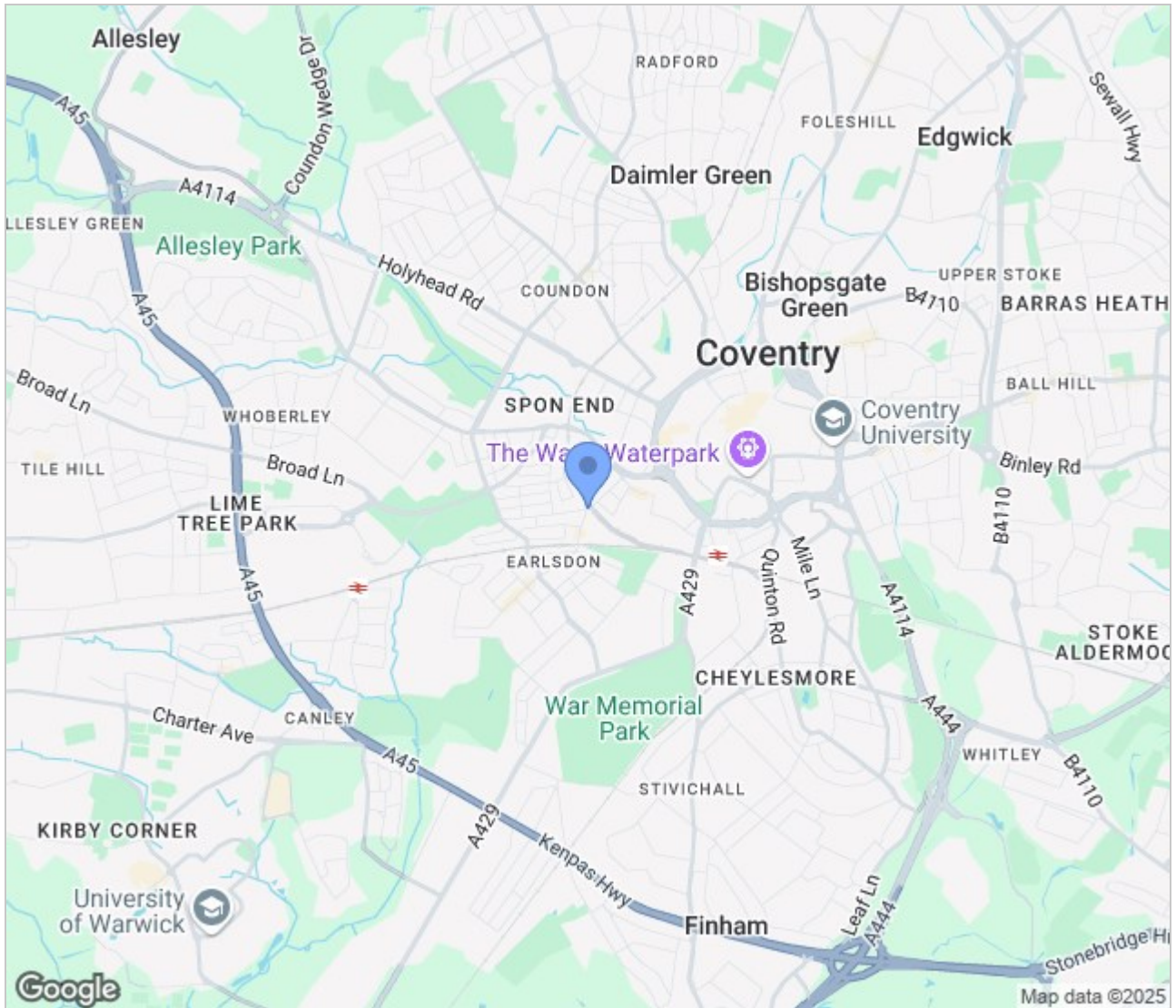
The lux-suites have been designed to really appreciate and utilise the space exceptionally well, cleverly creating a subtle dividing bed/living area space. The kitchenette is equipped for all your daily requirements including a microwave, sink and an under counter fridge (the main communal kitchen includes a hob and oven as well as freezers, cupboard space, washing machine and a dishwasher), a lovely little lounge area with sofa, coffee table and TV, as well as a desk for all your study or work requirements. The shower room has a wonderfully modern tile design with a spacious shower, sink & toilet. The lux-suite comes fully furnished to a high standard throughout.

£825.00 per calendar month. Including Bills

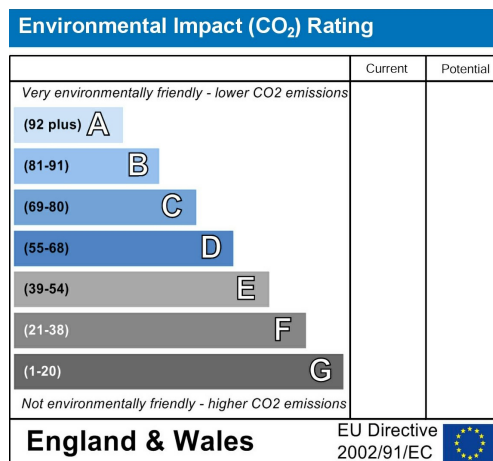
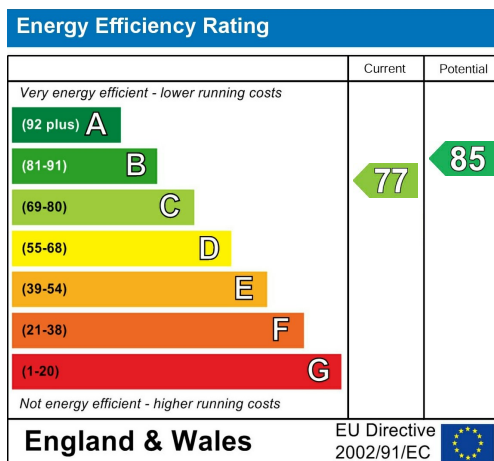
Council Tax Band A



## Area Map



## Energy Efficiency Graph



These particulars, whilst believed to be accurate are set out as a general outline only for guidance and do not constitute any part of an offer or contract. Intending purchasers should not rely on them as statements of representation of fact, but must satisfy themselves by inspection or otherwise as to their accuracy. No person in this firm's employment has the authority to make or give any representation or warranty in respect of the property.

GLB Property Services Ltd  
9 Hay Lane  
Coventry, CV1 5RJ

T. 02476 433416

info@glbpropertyservices.com  
www.glbpropertyservices.com

