



PROPERTY  
SERVICES  
LIMITED



117 Sovereign Road  
, Coventry, CV5 6JB

£3,000 Per Calendar Month

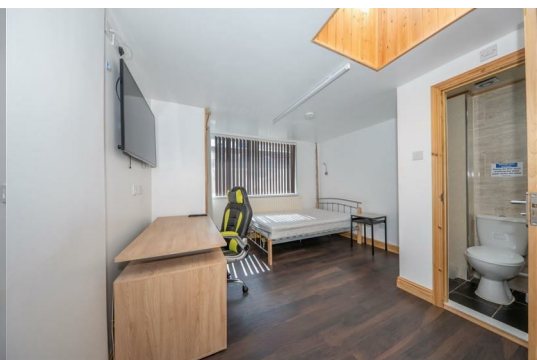
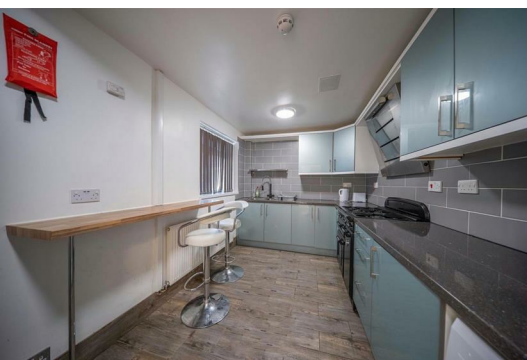


**\*\*STUDENT ACCOMMODATION 2024-2025 - ZERO DEPOSIT SCHEME AVAILABLE\*\***

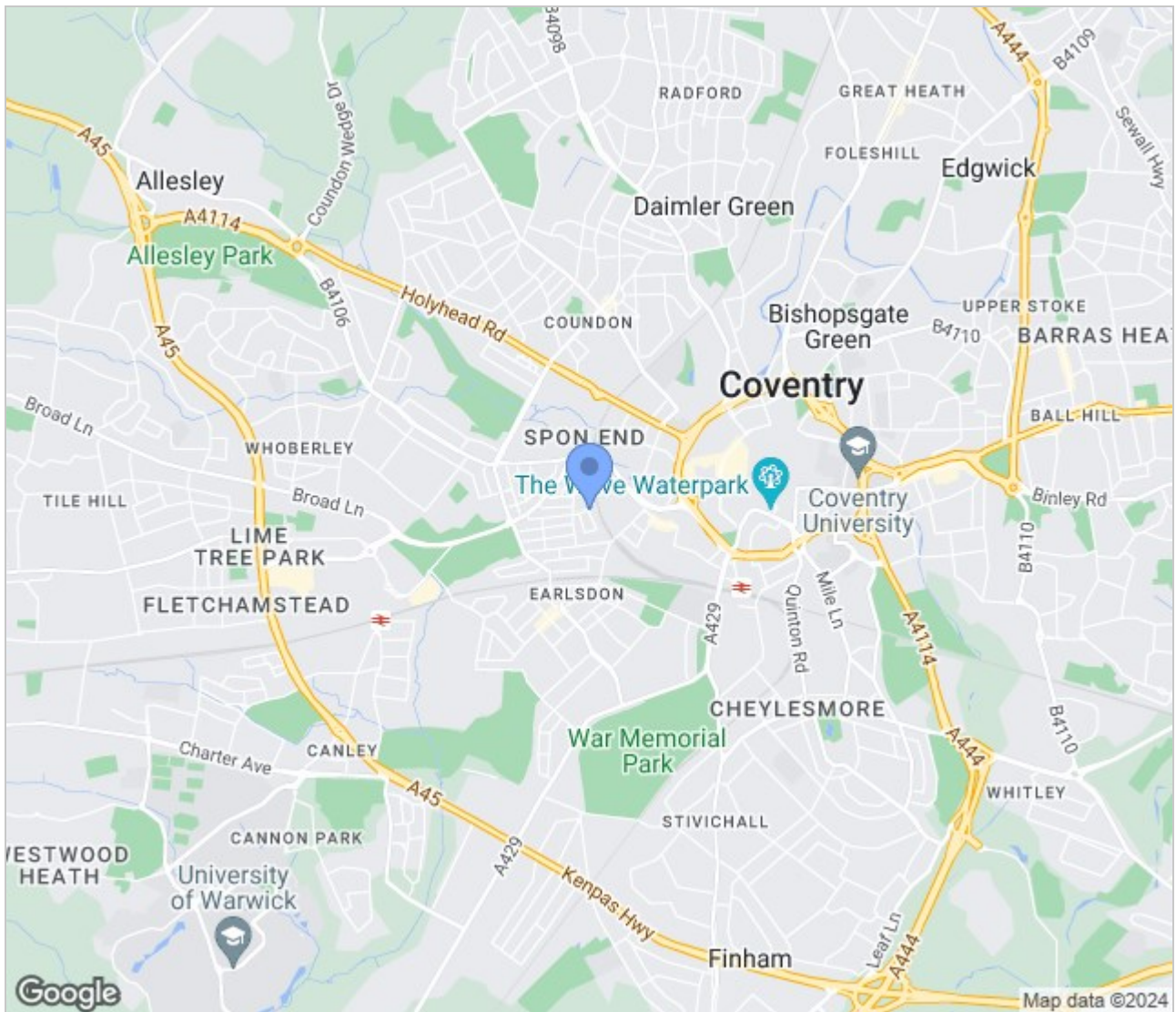
This Modern 6 Bedroom Property Is Available For The Next Academic Year 2023-24 Located In The Earlsdon Area – Ideally Located for Warwick & Coventry University as well as the City Centre & Earlsdon High Street Which Is Great For Restaurants & Bars. The Rooms Also Benefit Of En-suite Facilities.

The property briefly comprises of:

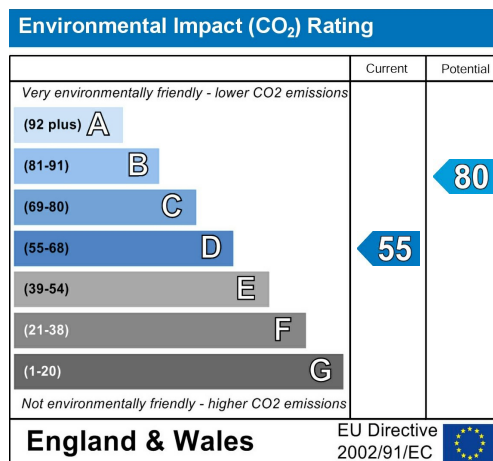
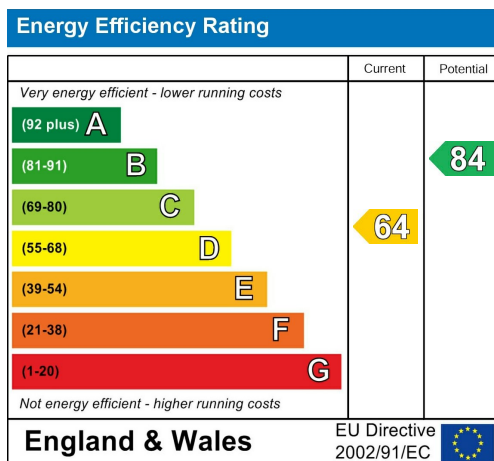
- Large communal kitchen/diner with appliances
- Lounge with leather sofas
- 6 Double bedrooms with en-suite shower rooms
- Flat screen Tvs in each room
- Intercom entry system for each room
- Furnished to a good standard to suit your studies
- Wooden flooring throughout
- Rear yard
- 500mb Broadband



## Area Map



## Energy Efficiency Graph



These particulars, whilst believed to be accurate are set out as a general outline only for guidance and do not constitute any part of an offer or contract. Intending purchasers should not rely on them as statements of representation of fact, but must satisfy themselves by inspection or otherwise as to their accuracy. No person in this firm's employment has the authority to make or give any representation or warranty in respect of the property.

GLB Property Services Ltd  
9 Hay Lane  
Coventry, CV1 5RJ

T. 02476 433416

info@glbpropertyservices.com  
www.glbpropertyservices.com

