



PROPERTY
SERVICES
LIMITED

41a Holbrook Road , Leicester, LE2 3LG

£775 Per Calendar Month



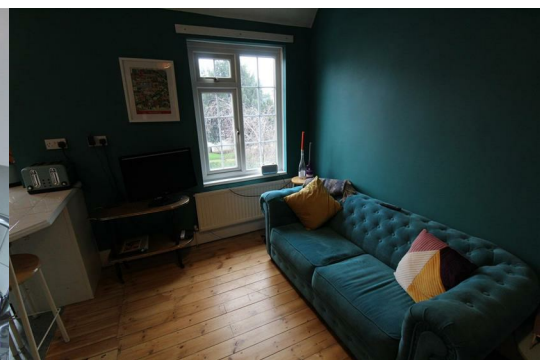
Well Presented One Bedroom Flat Available August 2025 In The Leicester Area - Within Walking Distance To Victoria Park & Local Amenities

The property briefly comprises of the following:

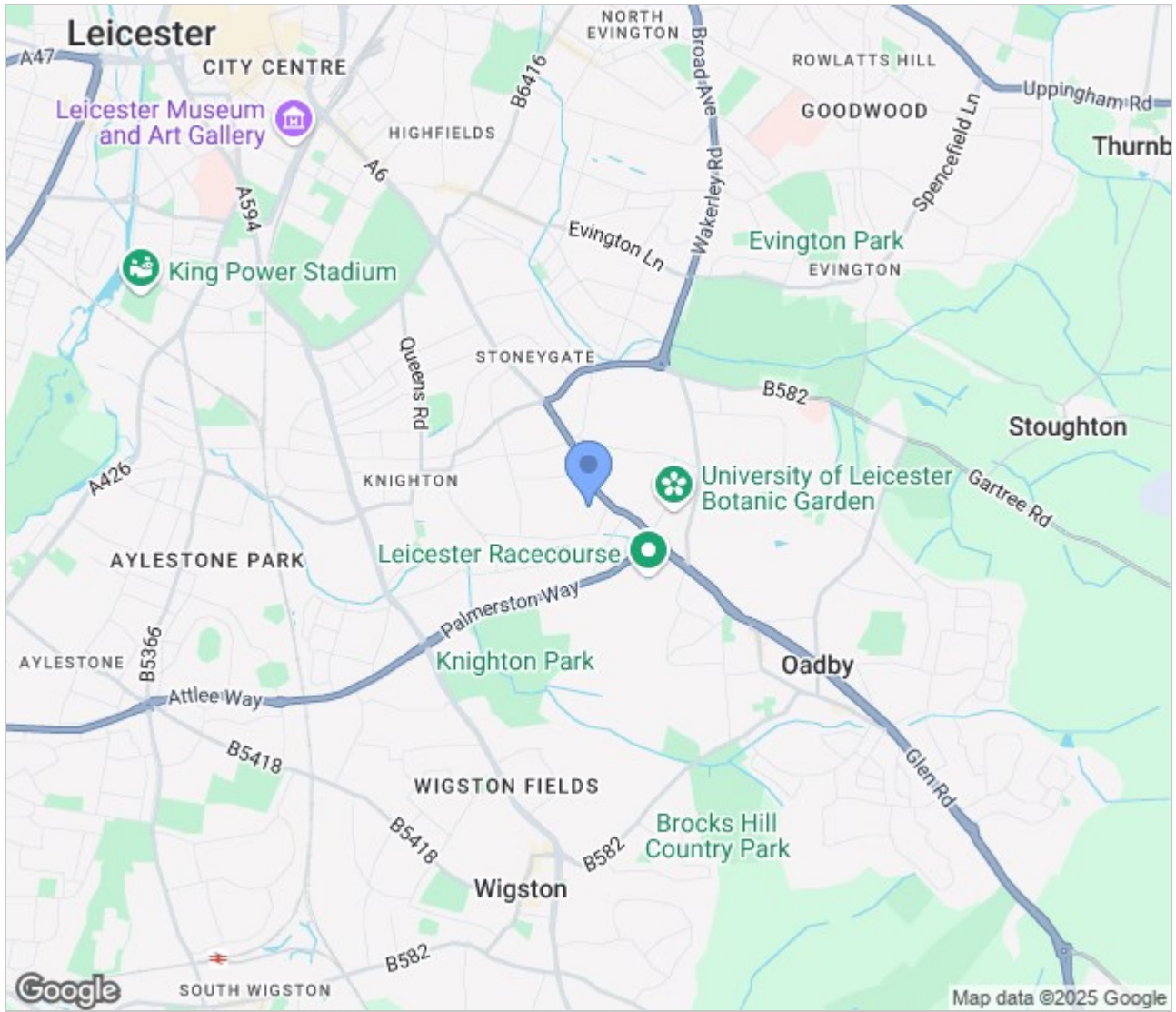
- Open plan kitchen/lounge with appliances
- Double bedroom
- Bathroom with shower over bath
- Communal entrance
- Fully furnished to a good standard
- Communal garden
- On street parking
- Available 15th August 2025

£775.00 per calendar month. Excluding Bills

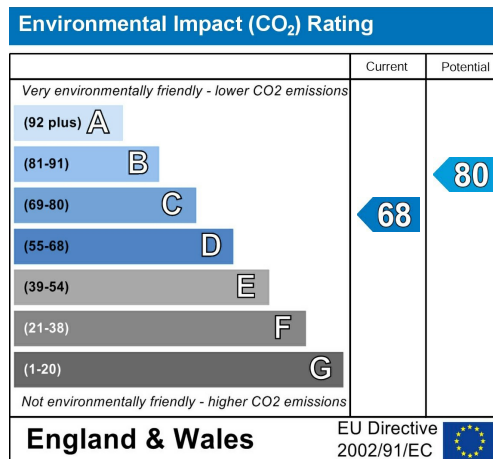
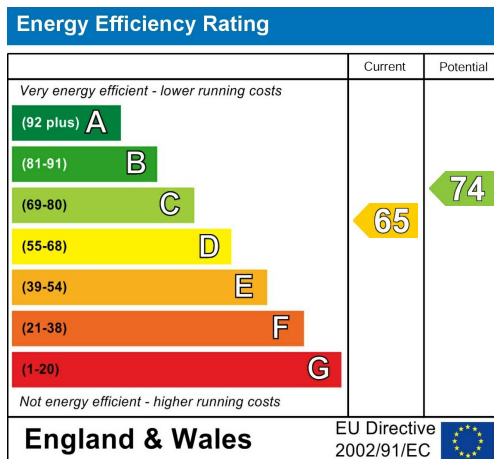
Council tax band A



Area Map



Energy Efficiency Graph



These particulars, whilst believed to be accurate are set out as a general outline only for guidance and do not constitute any part of an offer or contract. Intending purchasers should not rely on them as statements of representation of fact, but must satisfy themselves by inspection or otherwise as to their accuracy. No person in this firm's employment has the authority to make or give any representation or warranty in respect of the property.

GLB Property Services Ltd
9 Hay Lane
Coventry, CV1 5RJ

T. 02476 433416

info@glbpropertyservices.com
www.glbpropertyservices.com

