



**The Street, Rodmell**

**Lewes  
Estates**



Rodmell is a picturesque village nestled in the heart of East Sussex, just three miles southeast of Lewes. This charming village offers a tranquil lifestyle with its scenic countryside views and proximity to the South Downs National Park, perfect for nature lovers and outdoor enthusiasts. The village is steeped in history, featuring the early Norman church of St. Peter and the renowned Monk's House, once the home of Virginia Woolf, now a National Trust property.

Residents enjoy a strong sense of community, with local events and activities fostering a welcoming atmosphere. The village's location provides easy access to the bustling town of Lewes, known for its independent shops, cafes, and cultural attractions. Excellent transport links, including the nearby Southease railway station, ensure convenient connections to Brighton and London, making it ideal for commuters.

Rodmell's peaceful environment, combined with its rich heritage and modern amenities, makes it a highly desirable place to call home.





Nestled in the picturesque village of Rodmell, East Sussex, this enchanting semi-detached house, built around 1680, offers a unique blend of historical charm and modern comfort. The property boasts a spacious layout with a total internal area of approximately 103.9 sq m (1118 sq ft), including delightful outbuildings.

The ground floor features a welcoming kitchen, perfect for family gatherings, and a cozy living room with ample natural light. The utility room provides additional convenience. Upstairs, you'll find three generously sized bedrooms, each with its own character and charm. The mezzanine level adds a touch of elegance and extra space for a home office or reading nook.

The house is surrounded by a beautifully maintained garden, featuring a variety of plants that add color and vibrancy throughout the year. The garden includes a timber garden room with a WC and shower, ideal for guests. The garden is especially spacious and very well planted with mature trees and shrubs, including fruit trees. The aerial view showcases the lush greenery and serene landscape, making this property a true oasis.





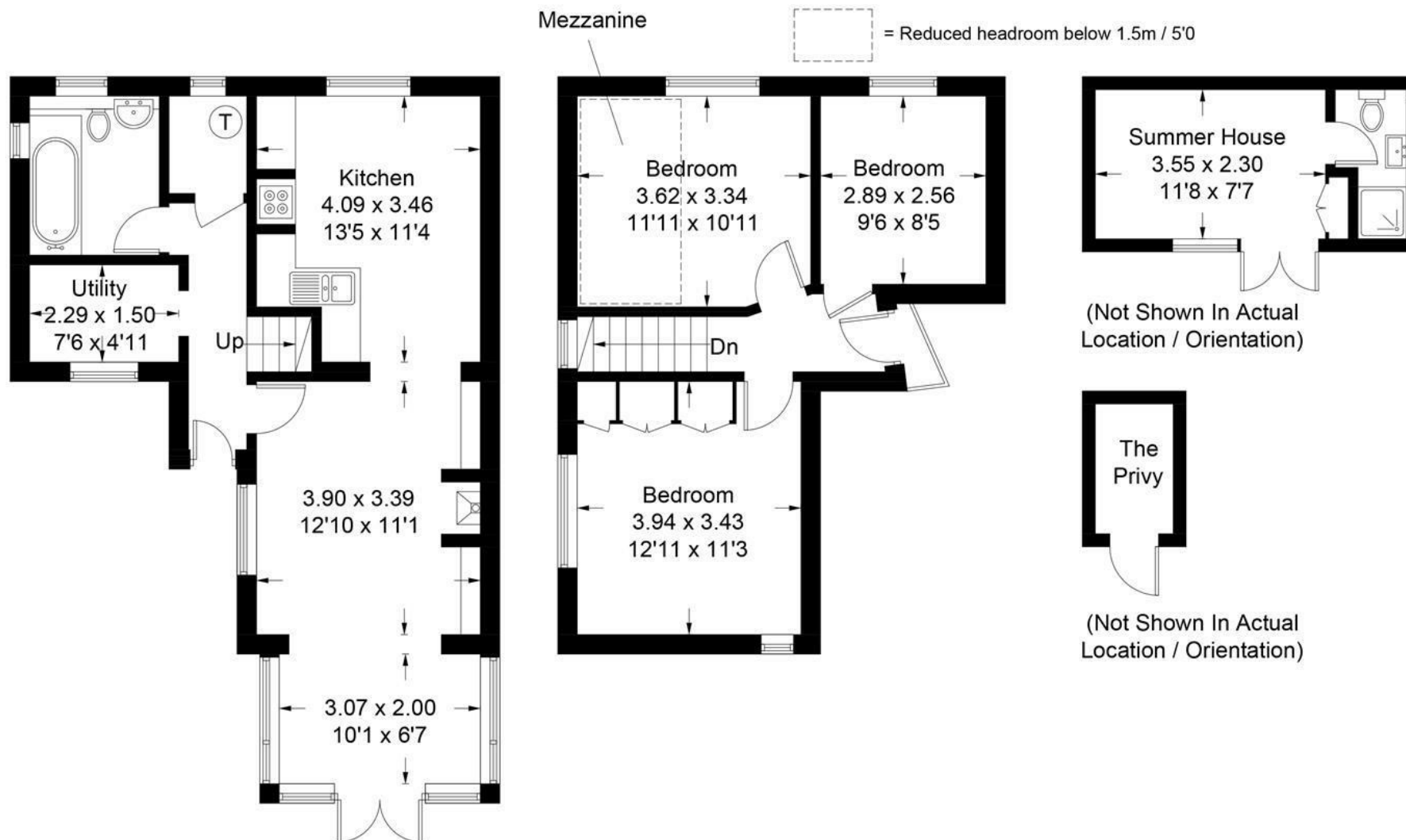
Rodmell is a quintessential English village, known for its tranquil atmosphere and stunning countryside views. The village offers a close-knit community, with local amenities including a charming pub, a village hall, and easy access to scenic walking trails. Rodmell is also famous for its connection to the Bloomsbury Group, with the former home of Virginia Woolf, Monk's House, located nearby.

This property offers historical significance with modern amenities, a spacious garden with a variety of plants, and close proximity to local attractions and countryside walks. It is ideal for families or those seeking a peaceful retreat.

Don't miss the opportunity to own a piece of history in the heart of Rodmell. Contact us today to arrange a viewing and experience the charm of this unique property for yourself.



draft



## Ground Floor

## First Floor

Approximate Gross Internal Area = 90.5 sq m / 974 sq ft

Outbuildings = 13.4 sq m / 144 sq ft

Total = 103.9 sq m / 1118 sq ft

Illustration for identification purposes only, measurements are approximate, not to scale. floorplansUsketch.com © (ID1124785)



t: 01273 477377

e: sales@lewesestates.co.uk

Every care is taken in preparing our sales particulars and they are usually verified by the vendor. We do not guarantee appliances, electrical fittings, plumbing, etc; you must satisfy yourself that they operate correctly. Room sizes are approximate. Please do not use them to buy carpets or furniture. We cannot verify the tenure as we do not have access to the legal title. We cannot guarantee boundaries or rights of way. You must take advice of your legal representative.





**Lewes  
Estates**

**52 High Street, Lewes, East Sussex, BN7 1XE**

**t: 01273 477377 e: [sales@lewesestates.co.uk](mailto:sales@lewesestates.co.uk)**

**[www.lewesestates.co.uk](http://www.lewesestates.co.uk)**