



Greenstead Gardens, Woodford Green, IG8

BUTLER & STAG



**Guide Price £600.000 -
£625.000**

**Offering accommodation over
two floors, this three
bedroom end of terraced
family home is situated on a
quiet residential road offering
versatile living
accommodation throughout.**



Freehold

- Three Bedrooms
- Off Street Parking
- Potential To Extend (STPP)
- Semi Detached
- Garage

The downstairs accommodation comprises of a through lounge, conservatory extension and a separate kitchen. the current layout provides flexible and spacious living accommodation and offers an abundance of natural light.

On the first floor, there are three well proportioned bedrooms and family bathroom. The property has a garage to the side as well as additional side access and benefits from excellent scope to extend (Subject To Planning Permission).

With the outstanding schools, excellent local amenities and fantastic public green spaces so close by, the property offers substantial potential and is ready to become an outstanding family home.

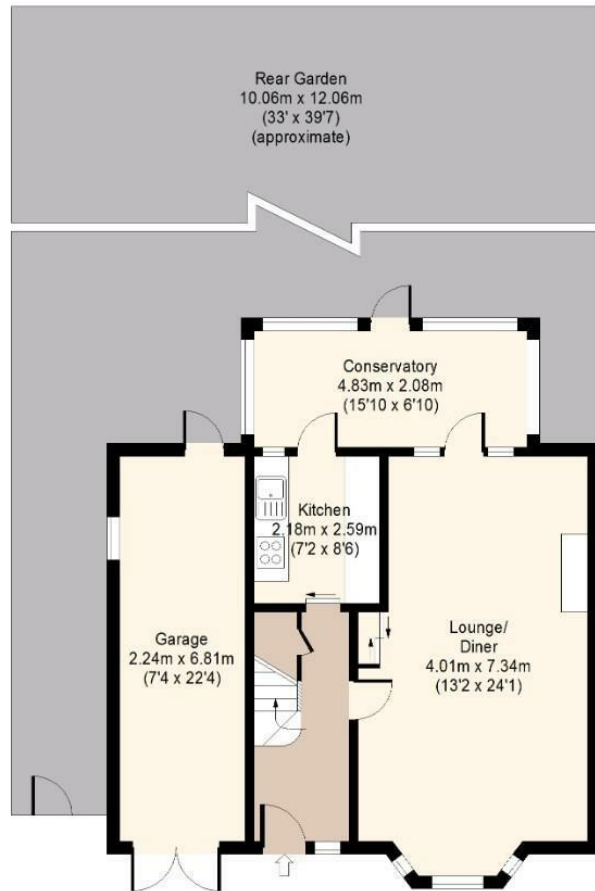




Greenstead Gardens

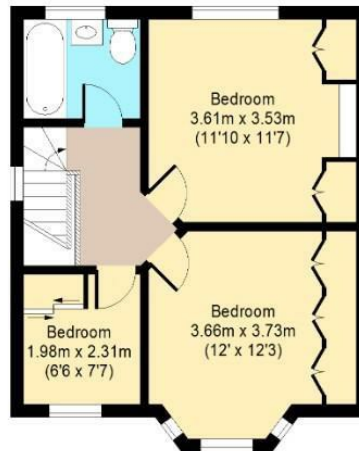
Ground Floor

Approx. 67.45 Sq. meters (726 Sq. feet)



First Floor

Approx. 41.43 Sq. meters (446 Sq. feet)



Total area: approx. 108.88 Sq. meters (1172 Sq. feet) (Including Garage)

Total area: approx. 92.85 Sq. meters (999 Sq. feet) (Excluding Garage)

For illustration purposes only - not to scale

www.lpaplus.com

IMPORTANT NOTICE - These particulars have been prepared in good faith and they are not intended to constitute part of and offer or contract. We have not performed a structural survey on this property and the services, appliances an specific fittings have not been tested. All photographs, measurements, floor plans and distances referred to are given as a guide and should not be relied upon.

BUTLER & STAG

☎ 01992 667666

🏠 4 Forest Drive, Theydon Bois, Essex, CM16 7EY

✉ theydon@butlerandstag.com

www.butlerandstag.uk