



Bury Road, Sewarstonebury, London, E4

BUTLER & STAG



CLICK THROUGH FOR VIDEO TOUR

A selection of two, very high specification first floor two double bedroom apartments, with private sun balconies and set in a landmark building in an exclusive Sewardstonebury location.



Leasehold

- First Floor
- Impressive Specification Throughout
- Lift to All Floors
- West Essex Golf Club Nearby
- Prestigious Development
- High Ceilings
- Off Street Parking
- Landscaped Gardens

Green View is a landmark building in the heart of Sewardstonebury.

Butler & Stag are delighted to offer two, two double bedroom first floor apartments that have been completed to an exceptionally high specification.

Each of the properties offer bright open plan kitchen/reception rooms with dual aspect arched windows and doors out that give direct access to a private terrace area that make ideal spaces for entertaining on warm days and have views across West Essex golf course. The flooring is highest quality oak, with zonal underfloor heating for superb efficiency and keeping the living spaces clean and uncluttered.

The kitchens are suitably high quality, with dark door facings that highlight the white quartz worktops. Inset sinks and LED undercounter lighting add highlights and of course the integrated (Siemens) appliances are in keeping.

The bedrooms are better described as suites, each having luxury en-suite facilities (WC/Shower and wash hand basins), fitted storage and again underfloor heating, this time beneath deep fitted carpet.

Externally, the property is served by a carriage driveway which gives access to two allocated parking spaces.

At the rear, in addition to the private terrace areas, there are landscaped communal grounds with manicured lawns, water feature and views into West Essex Golf Club.

Sewardstonebury, is a small, exclusive hamlet on the outskirts of North Chingford, favoured by those that appreciate the rural feel with rolling Essex countryside on your doorstep and having two well regarded golf courses nearby it really is perfect

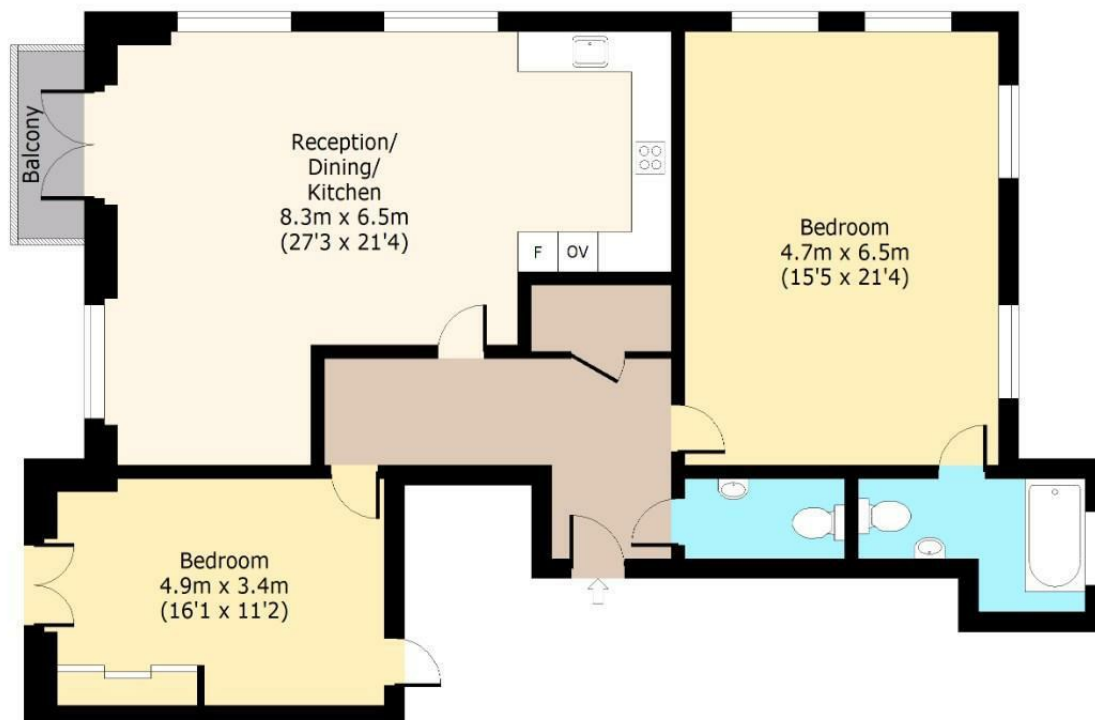




Bury Road, E4

First Floor

Approx. 118 Sq. meters (1270 Sq. feet)



Total area: approx. 118 Sq. meters (1270 Sq. feet)

For illustration purposes only - not to scale

www.lpaplus.com

IMPORTANT NOTICE - These particulars have been prepared in good faith and they are not intended to constitute part of and offer or contract. We have not performed a structural survey on this property and the services, appliances an specific fittings have not been tested. All photographs, measurements, floor plans and distances referred to are given as a guide and should not be relied upon.

BUTLER & STAG

☎ 01992 667666

🏠 4 Forest Drive, Theydon Bois, Essex, CM16 7EY

✉ theydon@butlerandstag.com

www.butlerandstag.uk