



BUTLER & STAG

Commercial Road | London
| E14

****Physical viewings taking place* ZERO DEPOSIT AVAILABLE***

Large 700 sq ft two bedroom apartment in the Mission Building. A grade II listed building formerly known as the Empire Memorial Sailors' Hostel.

Water rates included in the rental price!

• Two bedrooms • One bathroom • Furnished/unfurnished • Communal garden • Residents BBQ • Small-scale gym • Water rates included!

£1,500 /

Comprising of a fully integrated kitchen, open plan to a large reception. Both bedrooms are almost identical in size and feature fitted wardrobes. Meaning its perfect for sharers! There is also ample storage near the entrance.

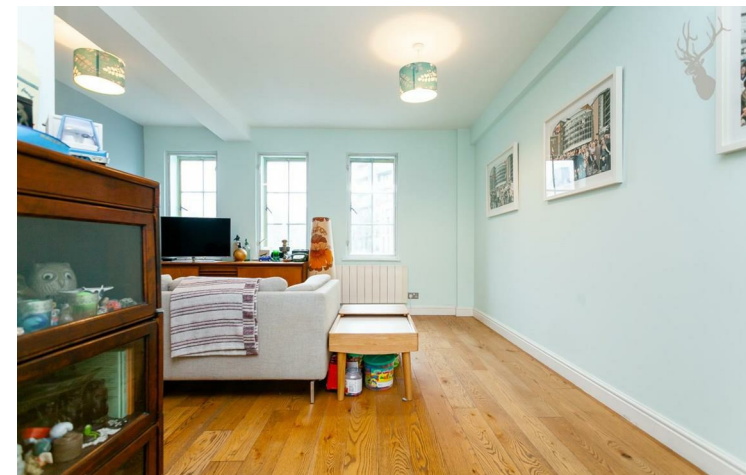
The Mission Building is a secure development with phone-operated entry system, lift access, communal garden with a residents BBQ, a large roof terrace with panoramic views of London and cycle stores. There's also an internal small-scale gym that's exclusive to tenants and a porter working Monday to Friday.

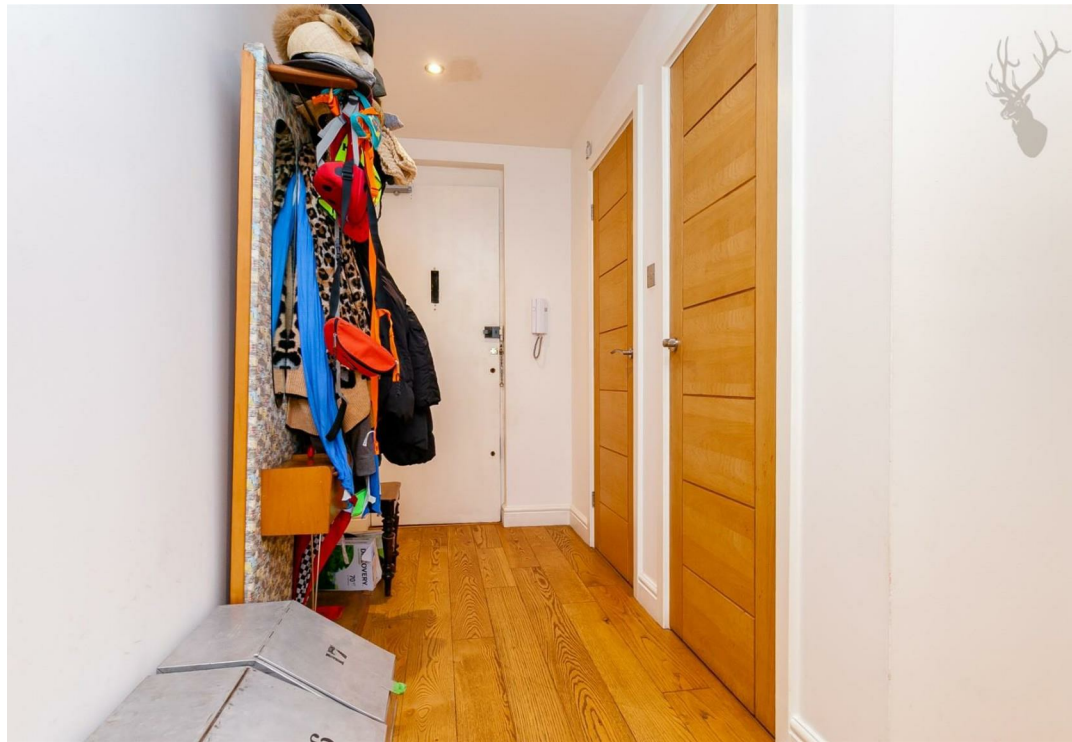
Located within walking distance of Limehouse DLR station and just a short walk to the Limehouse Cut canal. Offering quick access to the City and Canary Wharf.

3D Virtual Tour - This property has a fully immersive walk through.

Butler & Stag is delighted to offer Virtual Viewings to all of our residential clients. This innovative 3D property technology allows prospective buyers or tenants to immerse themselves with a virtual walk through of each of our properties 24 hours a day, 7 days a week, whilst in the comfort of their home, work or wherever they may be.

Like what you see? Please contact us for more information and to arrange a physical viewing.

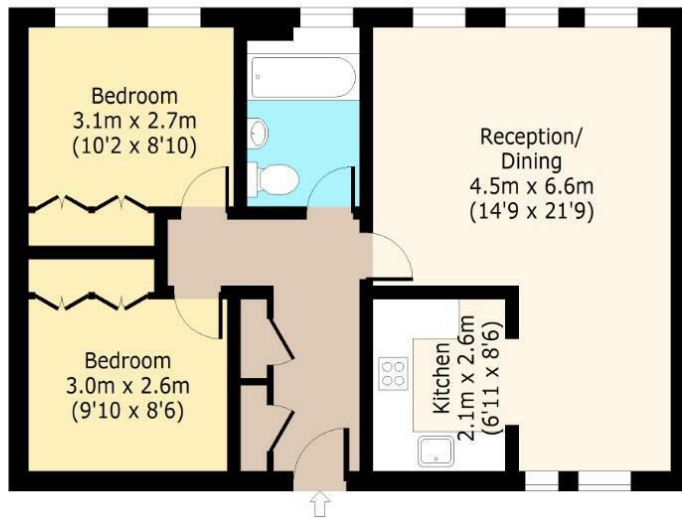




The Mission Building, Commercial Road, E14

Second Floor

Approx. 65.03 Sq. meters (700 Sq. feet)



Total area: approx. 65.03 Sq. meters (700 Sq. feet)

For illustration purposes only - not to scale

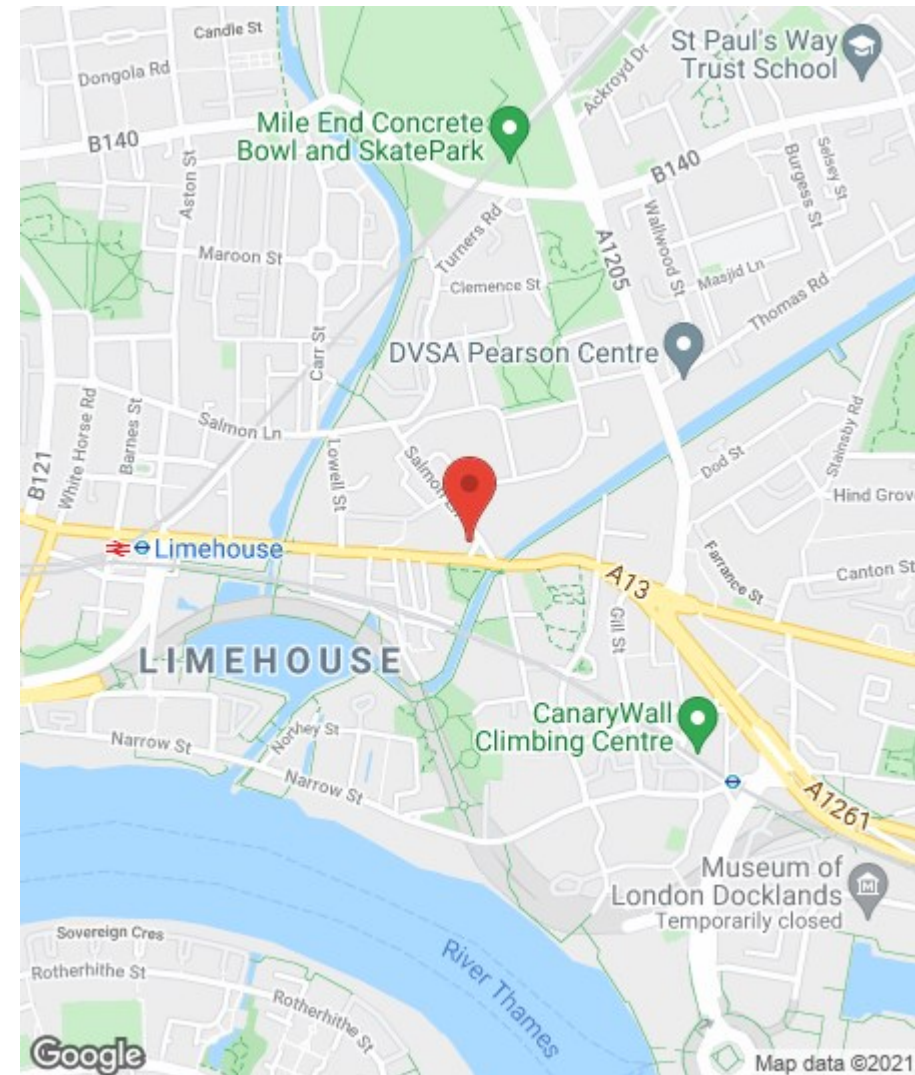
www.lpaplus.com

BUTLER & STAG

508 Roman Road, Bow, London, E3 5LU | 020 8102 1236 |

bow@butlerandstag.com | www.butlerandstag.uk

Important Notice - These particulars have been prepared in good faith and they are not intended to constitute part of an offer or contract. We have not performed a structural survey on this property and the services, appliances and specific fittings have not been tested. All photographs, measurements, floor plans and distances referred to are given as a guide and should not be relied upon.



Energy Efficiency Rating

	Current	Potential
Very energy efficient - lower running costs		
(92 plus) A		
(81-91) B		
(69-80) C		
(55-68) D		
(39-54) E		
(21-38) F		
(1-20) G		
Not energy efficient - higher running costs		
England & Wales	EU Directive 2002/91/EC	

Environmental Impact (CO₂) Rating

	Current	Potential
Very environmentally friendly - lower CO ₂ emissions		
(92 plus) A		
(81-91) B		
(69-80) C		
(55-68) D		
(39-54) E		
(21-38) F		
(1-20) G		
Not environmentally friendly - higher CO ₂ emissions		
England & Wales	EU Directive 2002/91/EC	