



1



1



1



C

DavidJames
the estate agent

Hine Hall, Mapperley, NG3 5PL

£625 Per Month

About This Property

Situated within the characterful Hine Hall in the sought-after area of Mapperley, this well-presented flat offers comfortable and convenient living in a secure setting. The property comprises a living room, a fitted kitchen, a well-proportioned bedroom and a bathroom complete with a shower over the bath. Residents benefit from beautifully maintained communal gardens, perfect for enjoying outdoor space, along with secure gated access providing peace of mind. The development also offers both resident and visitor parking. With its attractive surroundings and convenient location, this flat combines charm, security and everyday ease of living.

TENANCY DETAILS

Available From: NOW

Furnishing: Unfurnished

EPC Rating: C

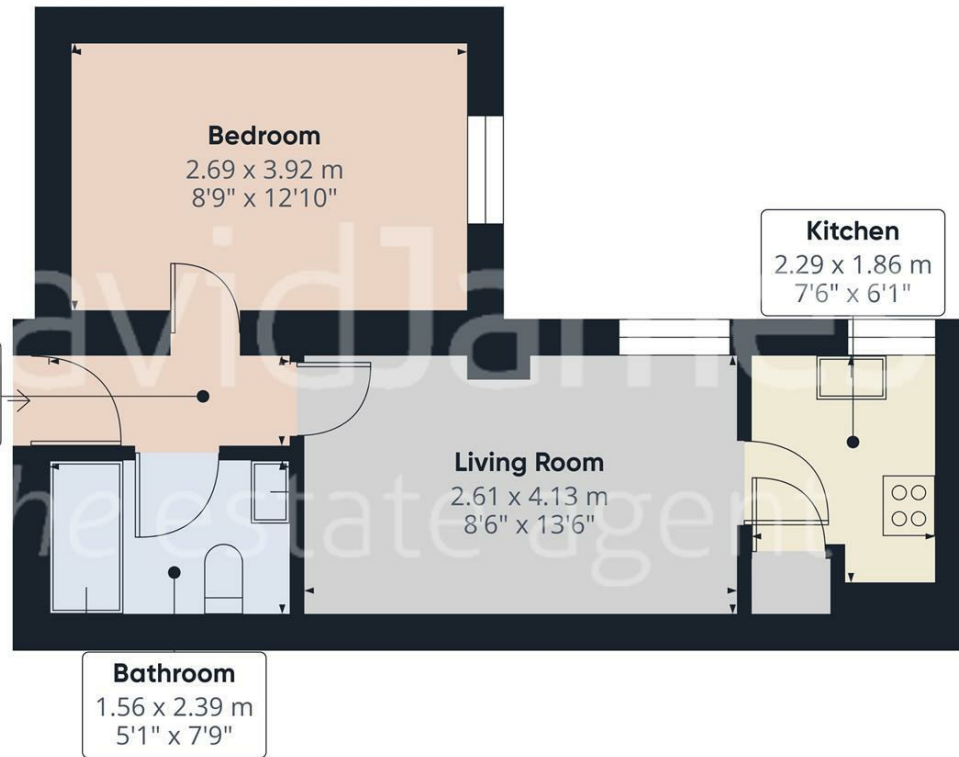
Council Band: A



- Flat located within the characterful Hine Hall
- Well-presented throughout, repainting and new bedroom carpet prior to tenancy.
- Bright living room
- Fitted kitchen
- Good-sized bedroom
- Full double glazing and electric heaters
- Secure gated access
- Well-maintained communal gardens
- Resident parking available
- Additional visitor parking





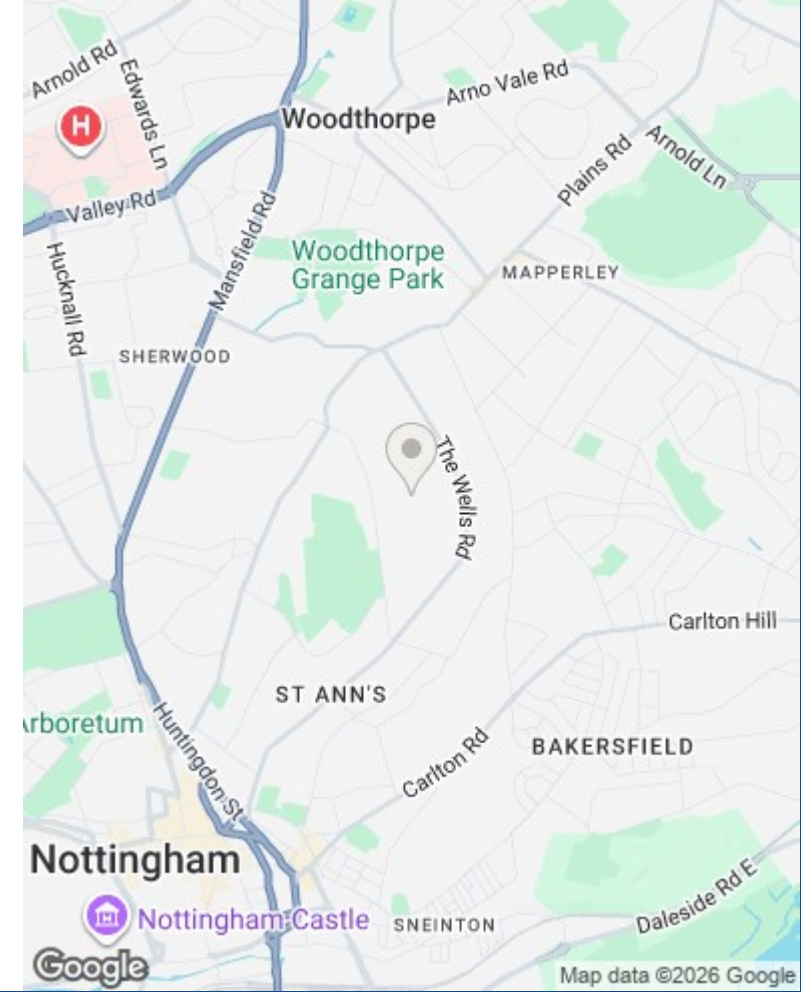


Approximate total area⁽¹⁾
32.1 m²
345 ft²

(1) Excluding balconies and terraces

Calculations reference the RICS IPMS 3C standard. Measurements are approximate and not to scale. This floor plan is intended for illustration only.

GIRAFFE360



These particulars are produced in good faith, are set out as a general guide only and do not constitute any part of a contract. No person in the employment of David James Estate Agents Ltd has any authority to make any representation whatsoever in relation to the property. All services, together with electrical fittings or fitted appliances have NOT been tested. All the measurements given in the details are approximate. Floor plans are for illustrative purposes only and are not drawn to scale. The position and size of doors, windows, appliances and other features are approximate only. The photographs of this property have been taken with a 10mm wide-angle lens. No responsibility can be accepted for any loss or expense incurred in viewing. If you have a property to sell you may wish to take advantage of our free valuation service. David James Estate Agents have established professional relationships with third-party suppliers for the provision of services to Clients. As remuneration for this professional relationship, the agent receives referral commission from the third-party company. David James Estate Agents receives the following commission from each third party supplier on a per referral basis: W A Barnes Ltd: £60 including VAT. All Moves UK Ltd: 18% including VAT of the invoice total (£107 including VAT average). MoveWithUs Limited: £188 including VAT (average).

Council Tax Band: A
Nottingham City Council

DavidJames
the estate agent

David James Estate Agents
45b Plains Road, Mapperley, Nottingham, NG3 5JU
t: 0115 962 4213 e: lettings@david-james.com

