



3



2



1



E

DavidJames
the estate agent

Chard Street, New Basford, Nottingham, NG7 7GU

£895 Per Calendar Month

About This Property

This deceptively spacious mid-terrace house offers generous accommodation ideally suited to professionals, couples or families. The property boasts two reception rooms, providing flexible space for living and dining, along with a practical kitchen with a freestanding cooker. Upstairs there are three bedrooms, including two large doubles, plus a bathroom/WC with a white suite and electric shower. Outside there is a low maintenance rear garden, perfect for relaxing with minimal upkeep. Situated within easy reach of excellent transport links and a wide range of local amenities, this well-presented property offers both convenience and comfort in a popular location.

TENANCY DETAILS

Available From: NOW

Tenancy Term: Minimum 6 months

Furnishing: Unfurnished

EPC Rating: E

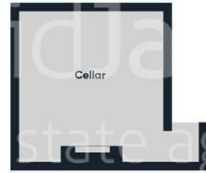
Council Band: A

Pets: Not permitted

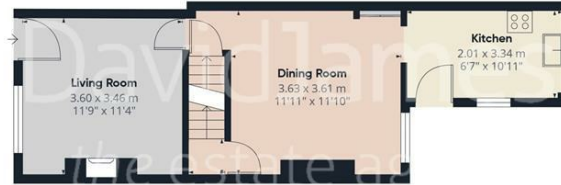
- Deceptively spacious mid-terrace house
- Three bedrooms (including two large double bedrooms)
- Two reception rooms
- Kitchen with freestanding cooker
- First floor bathroom/WC with white suite & electric shower
- UPVC double glazing
- Gas central heating
- Low maintenance rear garden
- Ample amenities & transport links close by







Floor -1



Floor 0



Floor 1

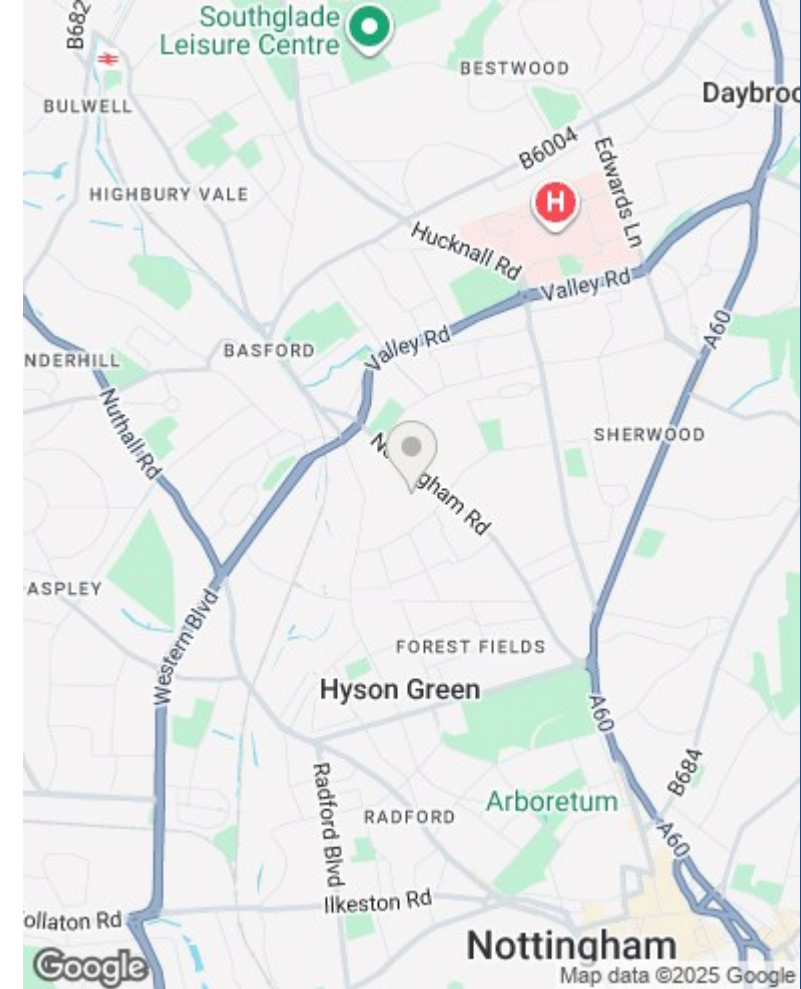


Approximate total area⁽¹⁾
73.3 m²
787 ft²

(1) Excluding balconies and terraces

Calculations reference the RICS IPMS 3C standard. Measurements are approximate and not to scale. This floor plan is intended for illustration only.

GIRAFFE360



Council Tax Band: A
Nottingham City Council

These particulars are produced in good faith, are set out as a general guide only and do not constitute any part of a contract. No person in the employment of David James Estate Agents Ltd has any authority to make any representation whatsoever in relation to the property. All services, together with electrical fittings or fitted appliances have NOT been tested. All the measurements given in the details are approximate. Floor plans are for illustrative purposes only and are not drawn to scale. The position and size of doors, windows, appliances and other features are approximate only. The photographs of this property have been taken with a 10mm wide-angle lens. No responsibility can be accepted for any loss or expense incurred in viewing. If you have a property to sell you may wish to take advantage of our free valuation service. David James Estate Agents have established professional relationships with third-party suppliers for the provision of services to Clients. As remuneration for this professional relationship, the agent receives referral commission from the third-party company. David James Estate Agents receives the following commission from each third party supplier on a per referral basis: W A Barnes Ltd: £60 including VAT. All Moves UK Ltd: 18% including VAT of the invoice total (£107 including VAT average). MoveWithUs Limited: £188 including VAT (average).

DavidJames
the estate agent

David James Estate Agents
45b Plains Road, Mapperley, Nottingham, NG3 5JU
t: 0115 962 4213 e: lettings@david-james.com

