



DavidJames
the estate agent

Besecar Avenue, Gedling, Nottingham, NG4 4DL

£1,300 Per Month

About This Property

Situated in the popular area of Gedling, this beautifully refurbished semi-detached home offers stylish and spacious living throughout. The property has been upgraded to a high standard, featuring brand new flooring and a bright, welcoming interior. The generous living room provides a comfortable space to relax, complete with a charming feature fireplace. To the rear, a contemporary kitchen has been newly installed, boasting integrated oven, hob and extractor, alongside a dedicated dining area with double patio doors that open onto a substantial rear garden. Upstairs, there are three well-proportioned bedrooms and a modern bathroom fitted with a sleek white suite and mains shower over the bath. Externally, the property benefits from a driveway, garage and a large enclosed rear garden. Conveniently located close to local amenities and excellent public transport links, this home combines comfort, style and practicality in a sought-after location.

TENANCY DETAILS

Available From: Now

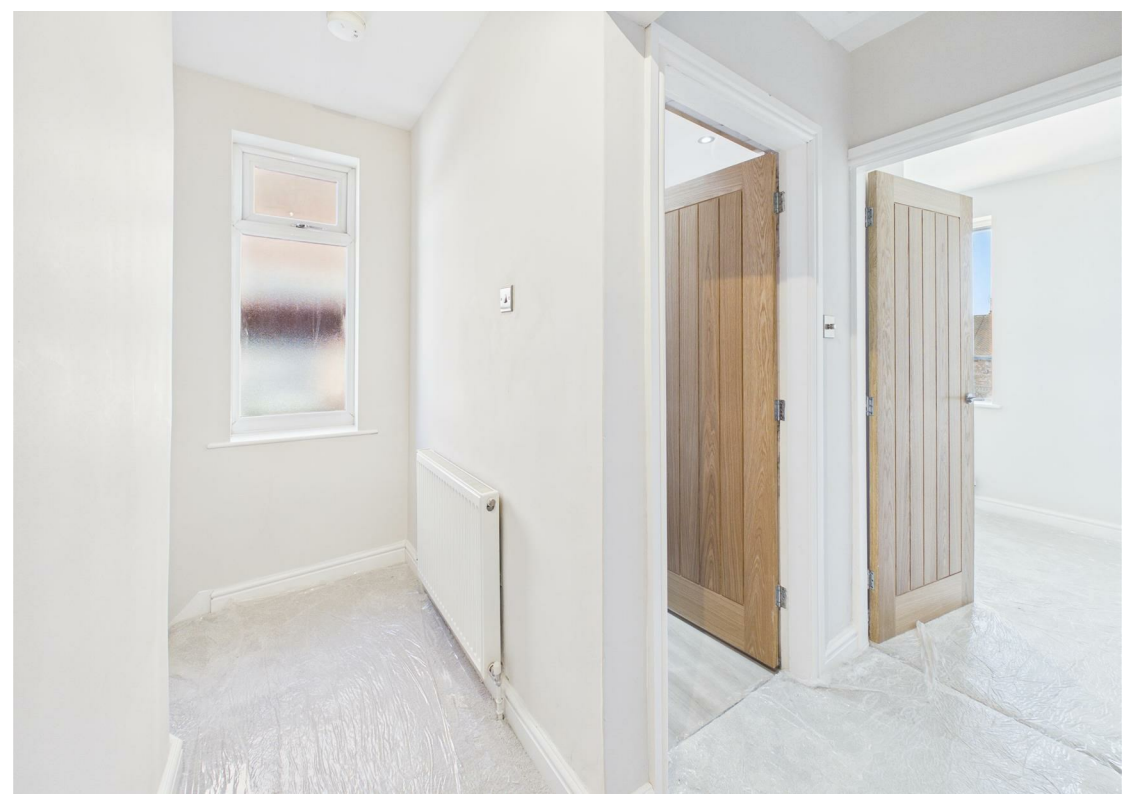
Furnishing: Unfurnished

EPC Rating: C

Council Band: B

- Fully refurbished throughout
- Spacious living room with feature fireplace
- Brand new modern kitchen with integrated appliances
- Dining area with double patio doors
- Three well-proportioned bedrooms
- Contemporary bathroom with mains shower
- Full double glazing & gas central heating
- Driveway providing off-street parking
- Garage for additional storage
- Large enclosed rear garden



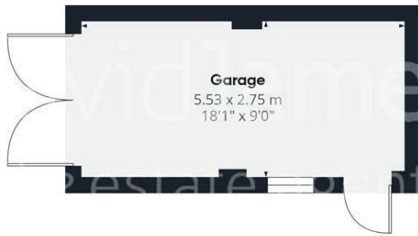




Floor 0 Building 1



Floor 1 Building 1



Floor 0 Building 2



Approximate total area*
86.7 m²
934 ft²

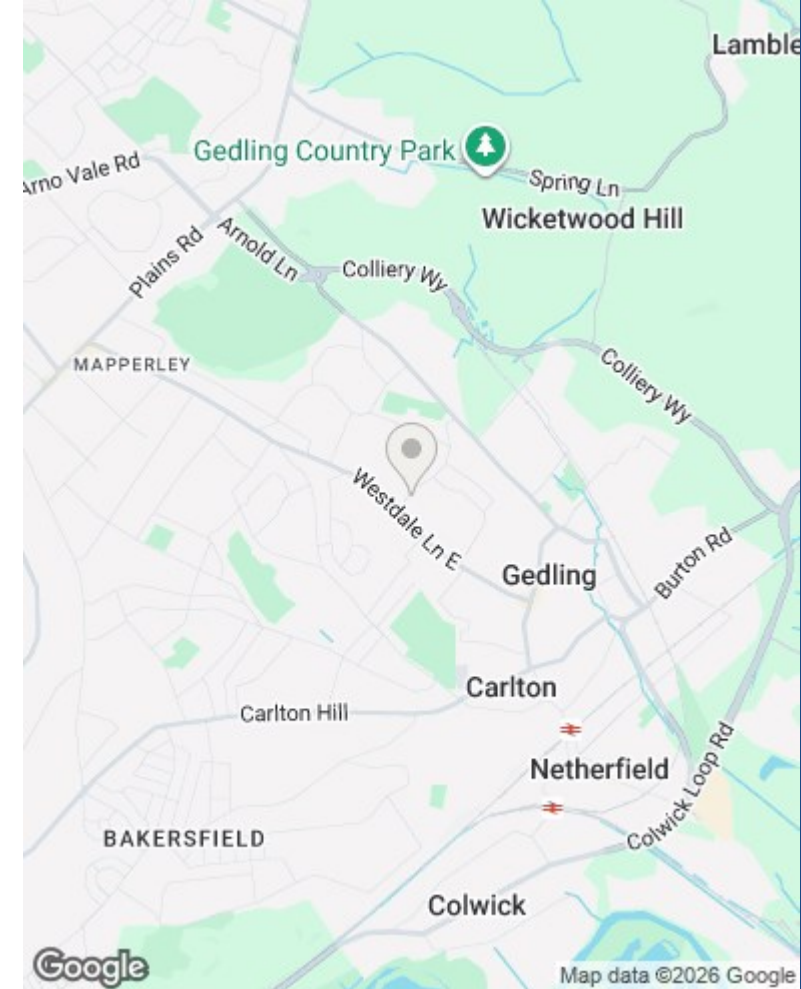
Reduced headroom
0.1 m²
1 ft²

(1) Excluding balconies and terraces

Reduced headroom
----- Below 1.5 m/5 ft

Calculations reference the RICS IPMS 3C standard. Measurements are approximate and not to scale. This floor plan is intended for illustration only.

GIRAFFE360



These particulars are produced in good faith, are set out as a general guide only and do not constitute any part of a contract. No person in the employment of David James Estate Agents Ltd has any authority to make any representation whatsoever in relation to the property. All services, together with electrical fittings or fitted appliances have NOT been tested. All the measurements given in the details are approximate. Floor plans are for illustrative purposes only and are not drawn to scale. The position and size of doors, windows, appliances and other features are approximate only. The photographs of this property have been taken with a 10mm wide-angle lens. No responsibility can be accepted for any loss or expense incurred in viewing. If you have a property to sell you may wish to take advantage of our free valuation service. David James Estate Agents have established professional relationships with third-party suppliers for the provision of services to Clients. As remuneration for this professional relationship, the agent receives referral commission from the third-party company. David James Estate Agents receives the following commission from each third party supplier on a per referral basis: W A Barnes Ltd: £60 including VAT. All Moves UK Ltd: 18% including VAT of the invoice total (£107 including VAT average). MoveWithUs Limited: £188 including VAT (average).

Council Tax Band: B
Gedling Borough Council

DavidJames
the estate agent

David James Estate Agents
45b Plains Road, Mapperley, Nottingham, NG3 5JU
t: 0115 962 4213 e: lettings@david-james.com

