



DavidJames
the estate agent

Wheatley Drive, Carlton, NG4 1FE

£1,000 Per Calendar Month

About This Property

Situated in the popular area of Carlton is this 2-bedroom semi-detached house. The spacious lounge features a fireplace, creating a warm and welcoming atmosphere. The kitchen is well-equipped with ample cupboard space and comes complete with an integrated oven, electric hob, and double doors leading to a handy utility room for extra storage and practicality. Upstairs, you'll find two generously sized double bedrooms, (with the main bedroom benefiting from a large built-in wardrobe) and a bathroom fitted with a mains shower over the bath. Externally, the property boasts a private rear garden with a patio and a lawned area, perfect for outdoor dining or enjoying the sunshine. To the front, there is a double tandem driveway providing off-road parking for multiple vehicles. Located close to Carlton Hill amenities and bus routes to the City Centre.

TENANCY DETAILS

Available From: 22nd June 2026

Furnishing: Unfurnished

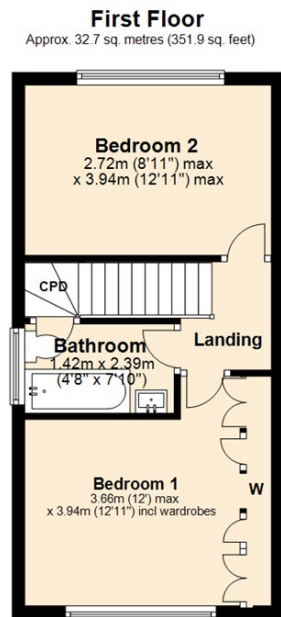
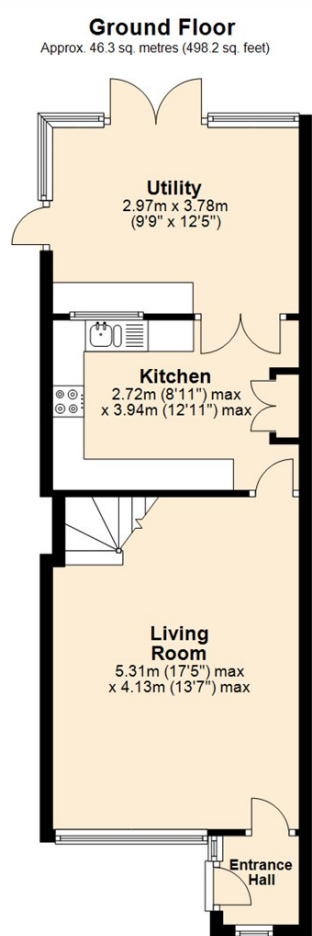
EPC Rating: C

Council Band: B

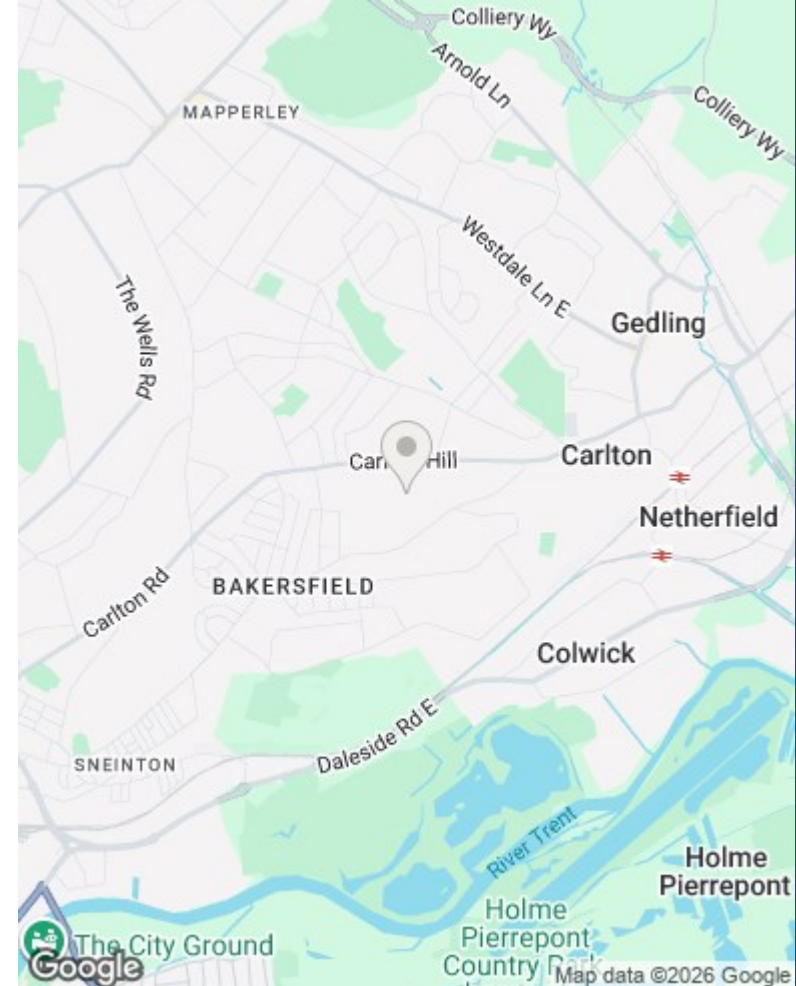
- Semi-detached house in the sought-after area of Carlton
- Two double bedrooms
- Spacious lounge with feature fireplace
- Kitchen with integrated oven and electric hob
- Utility room with access from the kitchen
- Main bedroom with large built-in wardrobe
- Bathroom with mains shower over the bath
- Full double glazing and gas central heating
- Rear garden with patio and lawned area
- Double tandem driveway for off-road parking







Total area: approx. 79.0 sq. metres (850.1 sq. feet)



Council Tax Band: B
Gedling Borough Council

These particulars are produced in good faith, are set out as a general guide only and do not constitute any part of a contract. No person in the employment of David James Estate Agents Ltd has any authority to make any representation whatsoever in relation to the property. All services, together with electrical fittings or fitted appliances have NOT been tested. All the measurements given in the details are approximate. Floor plans are for illustrative purposes only and are not drawn to scale. The position and size of doors, windows, appliances and other features are approximate only. The photographs of this property have been taken with a 10mm wide-angle lens. No responsibility can be accepted for any loss or expense incurred in viewing. If you have a property to sell you may wish to take advantage of our free valuation service. David James Estate Agents have established professional relationships with third-party suppliers for the provision of services to Clients. As remuneration for this professional relationship, the agent receives referral commission from the third-party company. David James Estate Agents receives the following commission from each third party supplier on a per referral basis: W A Barnes Ltd: £60 including VAT. All Moves UK Ltd: 18% including VAT of the invoice total (£107 including VAT average). MoveWithUs Limited: £188 including VAT (average).

DavidJames
the estate agent

David James Estate Agents
45b Plains Road, Mapperley, Nottingham, NG3 5JU
t: 0115 962 4213 e: lettings@david-james.com

naea | propertymark
PROTECTED

The Property Ombudsman