



3



1



1



C

DavidJames
the estate agent

Pine Grove, Hucknall, Nottingham, NG15 6AZ

£1,225 Per Calendar Month

About This Property

Situated in a quiet cul-de-sac in Hucknall, this semi-detached house offers comfortable and practical accommodation ideal for families or professional tenants, with excellent access to major transport links. The property is entered via an entrance hall leading to a spacious lounge/dining room, featuring a window to the front and French doors opening onto the rear garden, creating a bright and versatile living space. To the rear, the modern breakfast kitchen is fitted with a range of white units complemented by wood-effect worktops and a selection of integrated appliances, providing a stylish and functional cooking area. A useful lobby and store room add further practicality. To the first floor are three bedrooms, including two well-proportioned double bedrooms, along with a bathroom fitted with an electric shower over the bath and a separate WC. Outside, the property benefits from a low maintenance rear garden with paved patio and decking areas, ideal for outdoor seating, while the front features a gravelled garden and driveway providing off-road parking. Positioned close to local amenities, schools and transport links.

TENANCY DETAILS

Available From: NOW

Tenancy Term: Minimum 6 months

Furnishing: Unfurnished

EPC Rating: C

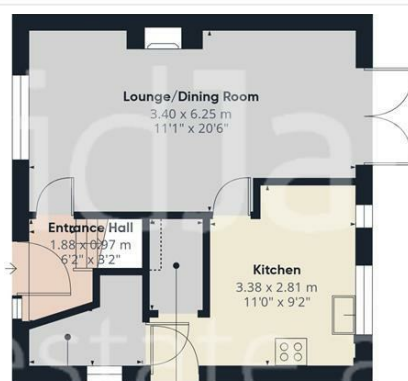
Council Band: A

Pets: Not permitted

- Semi-detached house
- Three bedrooms, including two doubles
- Entrance hall
- Spacious lounge/dining room with French doors
- Modern breakfast kitchen with integrated appliances
- Bathroom with electric shower over bath
- Separate WC
- Gas central heating, UPVC double glazing
- Low maintenance rear garden with patio and decking
- Gravelled front garden/driveway and close to major transport links







Floor 0



Floor 1



Approximate total area⁽¹⁾

74 m²
796 ft²

Reduced headroom

0.2 m²
2 ft²

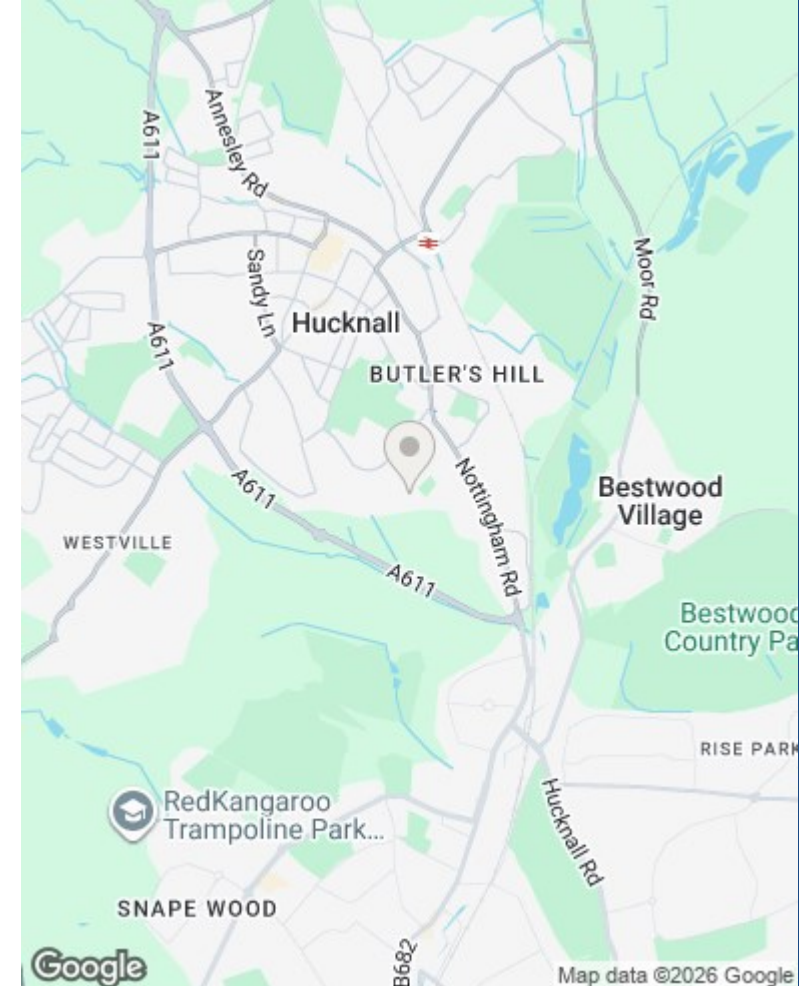
(1) Excluding balconies and terraces

Reduced headroom:

Below 1.5 m/5 ft

Calculations reference the RICS IPMS 3C standard. Measurements are approximate and not to scale. This floor plan is intended for illustration only.

GIRAFFE360



These particulars are produced in good faith, are set out as a general guide only and do not constitute any part of a contract. No person in the employment of David James Estate Agents Ltd has any authority to make any representation whatsoever in relation to the property. All services, together with electrical fittings or fitted appliances have NOT been tested. All the measurements given in the details are approximate. Floor plans are for illustrative purposes only and are not drawn to scale. The position and size of doors, windows, appliances and other features are approximate only. The photographs of this property have been taken with a 10mm wide-angle lens. No responsibility can be accepted for any loss or expense incurred in viewing. If you have a property to sell you may wish to take advantage of our free valuation service. David James Estate Agents have established professional relationships with third-party suppliers for the provision of services to Clients. As remuneration for this professional relationship, the agent receives referral commission from the third-party company. David James Estate Agents receives the following commission from each third party supplier on a per referral basis: W A Barnes Ltd: £60 including VAT. All Moves UK Ltd: 18% including VAT of the invoice total (£107 including VAT average). MoveWithUs Limited: £188 including VAT (average).

Council Tax Band: A
Ashfield District Council

DavidJames
the estate agent

David James Estate Agents
45b Plains Road, Mapperley, Nottingham, NG3 5JU
t: 0115 962 4213 e: lettings@david-james.com

