



DavidJames
the estate agent

Quarry Dale View, Mansfield, NG18 4UL

£1,000 Per Calendar Month

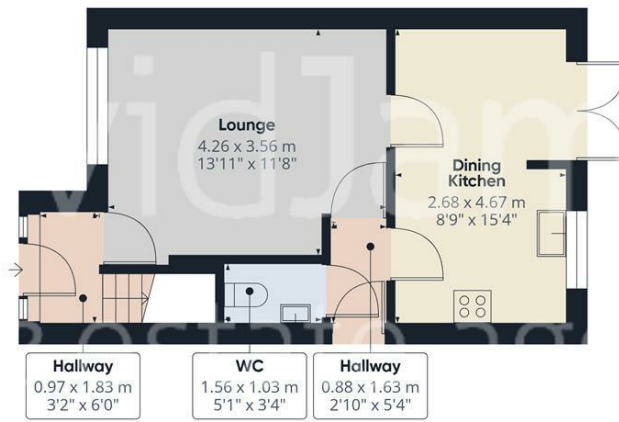
About This Property

Prime location for this three bedroom Modern detached home located in this sought after and popular residential area. The property is ready for immediate occupation and an early viewing is strongly advised. Benefiting from gas central heating and upvc double glazing with accommodation to comprise in brief of :- Entrance hallway, lovely modern well equipped kitchen/diner (15'4" x 8'10") with French doors onto the rear garden, integrated oven/hob, lounge (14'1" x 12'02") downstairs cloakroom/wc, stairs to first floor landing and master bedroom one (10'04" x 8'11") with built in wardrobes, En-suite shower room, bedroom two (9'11" x 7'01") with built in wardrobes, bedroom three (6'09" x 5'10"), family bathroom with 3 piece suite. outside there is an open plan front garden area with side private driveway. The rear garden offers a good degree of privacy and has wooden decking area and mature lawn. EPC Rating C, Council Tax Band C, all mains services are connected, Freehold, BOND £1153
VIEWING WITH AGENTS

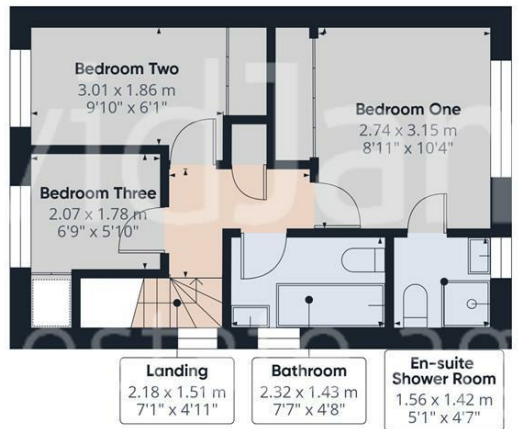
- Worthy of an early Viewing
- Three bedroom detached Home
- En-suite to master bedroom
- Driveway and private garden
- Modern fitted kitchen/diner - built in appliances
- Ready for immediate occupation
- Sought after, popular location
- Council Tax Band C, EPC Rating C
- Freehold, all mains services are connected
- BOND £1153







Floor 0



Floor 1

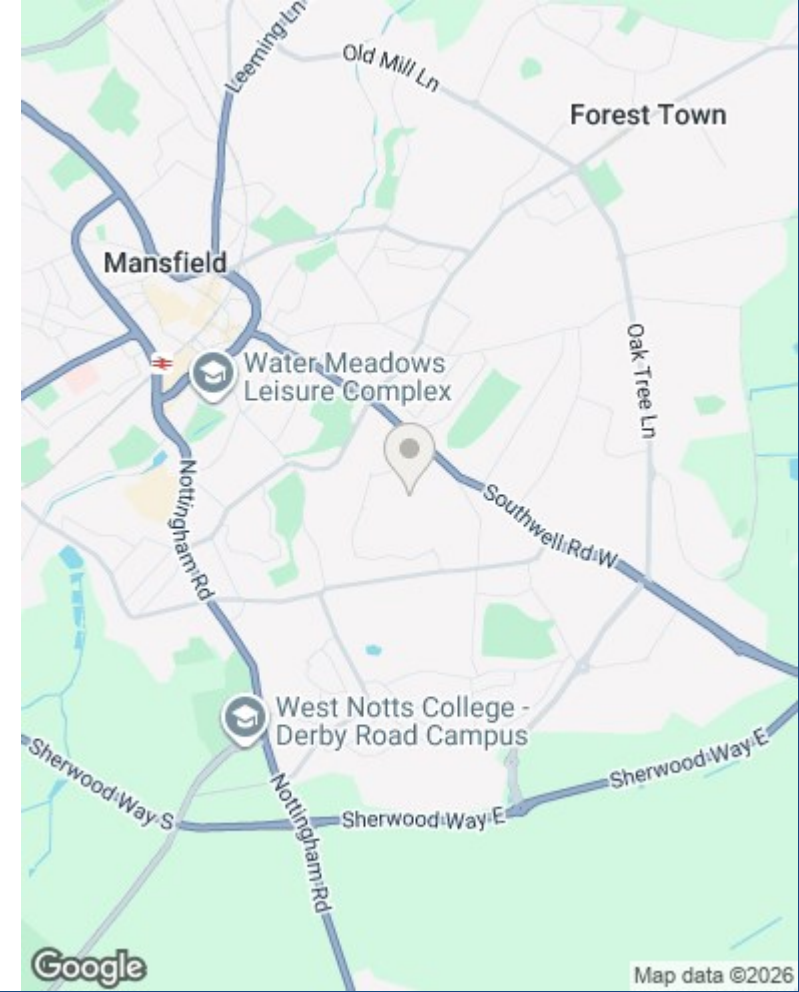


Approximate total area⁽¹⁾
63.1 m²
679 ft²

(1) Excluding balconies and terraces

Calculations reference the RICS IPMS 3C standard. Measurements are approximate and not to scale. This floor plan is intended for illustration only.

GIRAFFE360



These particulars are produced in good faith, are set out as a general guide only and do not constitute any part of a contract. No person in the employment of David James Estate Agents Ltd has any authority to make any representation whatsoever in relation to the property. All services, together with electrical fittings or fitted appliances have NOT been tested. All the measurements given in the details are approximate. Floor plans are for illustrative purposes only and are not drawn to scale. The position and size of doors, windows, appliances and other features are approximate only. The photographs of this property have been taken with a 10mm wide-angle lens. No responsibility can be accepted for any loss or expense incurred in viewing. If you have a property to sell you may wish to take advantage of our free valuation service. David James Estate Agents have established professional relationships with third-party suppliers for the provision of services to Clients. As remuneration for this professional relationship, the agent receives referral commission from the third-party company. David James Estate Agents receives the following commission from each third party supplier on a per referral basis: W A Barnes Ltd: £60 including VAT. All Moves UK Ltd: 18% including VAT of the invoice total (£107 including VAT average). MoveWithUs Limited: £188 including VAT (average).

**Council Tax Band: C
Mansfield**

DavidJames
the estate agent

David James Estate Agents
43 Forest Street, Sutton in Ashfield, Nottinghamshire,
NG17 1DA
t: 01623 554084 e: sales@wabharnes.co.uk

