



28 MOOR GROVE,
LAWRENCE WESTON, BS11 0LR

GOODMAN
& LILLEY



Living Room

uPVC double glazed bay window to front, radiator.

Dining Room

uPVC double glazed window to rear aspect, storage cupboard, radiator.

Kitchen

Window to side, heated towel rail, door to:

Entrance Hall

Storage cupboard, stairs leading to first floor.

Porch

Windows to side and front aspect.

Landing

uPVC window to side aspect, doors to upstairs rooms.

Bedroom 1

uPVC double glazed window to front aspect, two storage cupboards, radiator.

Bedroom 2

uPVC double glazed window to rear aspect, storage cupboards, radiator.

Bedroom 3

uPVC double glazed window to front aspect, boxing over stairs, radiator.

Bathroom

uPVC double glazed window to rear aspect, low level toilet with push button flush, pedestal hand wash basin, panel bath with shower over, radiator.

External open outbuilding

External storage with w/c

-
- ** Cash buyers only **
 - Recently refurbished
 - Over looking green space and woodland
 - Side access and rear external storage
 - End of terrace 3 bedroom property
 - Two reception rooms
 - Tucked away location
 - Council tax band- A

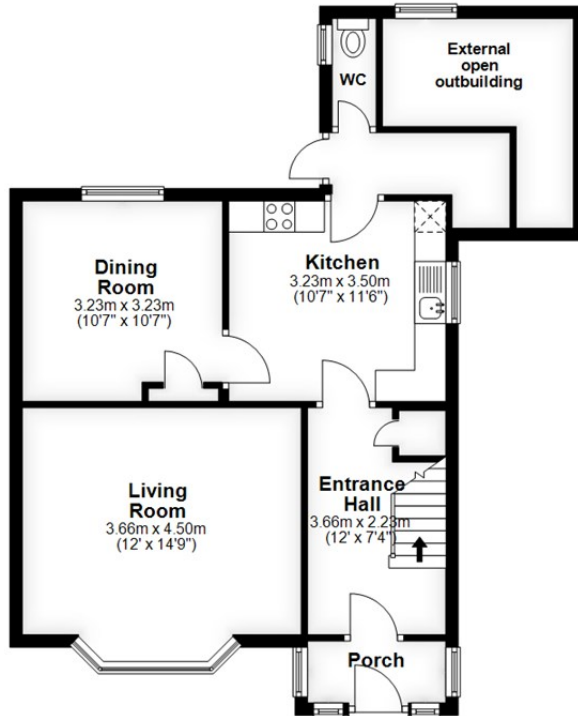


£195,000



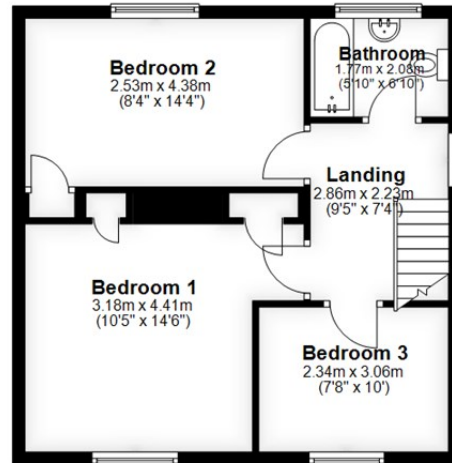
Ground Floor

Approx. 60.4 sq. metres (649.9 sq. feet)



First Floor

Approx. 46.7 sq. metres (503.2 sq. feet)



Total area: approx. 107.1 sq. metres (1153.1 sq. feet)

HENLEAZE - 0117 2130777
henleaze@goodmanlilley.co.uk

PORTISHEAD - 01275 430440
sales@goodmanlilley.co.uk

SHIREHAMPTON - 0117 2130333
shire@goodmanlilley.co.uk

Zoopla.co.uk

rightmove



WWW.GOODMANLILLEY.CO.UK

These particulars are for general guidance only. They do not form or constitute any part of an offer or contract. Goodman & Lilley has not carried out structural surveys of the property. The services, appliances or specific fittings mentioned in these details have not been tested. Every attempt is made to ensure accuracy, however all photographs, measurements, floor plans and distances are for illustrative purposes only. They must not be relied upon when purchasing carpets and or other fixtures & fittings. Lease details, service charges and ground rents are given as a guide only. They should be checked and confirmed by a licensed solicitor prior to exchange of contracts. The copyright of all details, photographs and floor plans remain exclusive to Goodman & Lilley.