



79 PRIORY ROAD,
SHIREHAMPTON, BS11 9TF

GOODMAN
& LILLEY



THIS BEAUTIFULLY PRESENTED THREE-BEDROOM PERIOD END OF TERRACE COMBINES ORIGINAL CHARACTER WITH STYLISH MODERN UPDATES IN A HIGHLY CONVENIENT SHIREHAMPTON LOCATION.

Entrance Hall

Composite entrance door, storage cupboard, stairs leading to first floor with storage under, tiled entrance, radiator.

Living Room

Two uPVC double glazed sash windows to front aspect, radiator, chimney breast with fireplace.

Dining Room

uPVC double glazed doors to rear aspect, storage cupboard housing Boiler, chimney breast, radiator.

Kitchen

uPVC double glazed window and door to rear aspect, a mixture of eye level and low level storage cupboards with quartz work tops and upstand over, Belfast sink with swan neck mixer tap over, built in fridge freezer, washing machine, dishwasher, raised microwave, wine rack, induction hob over oven, tiled flooring with under floor heating

Bedroom 1

Two uPVC double glazed sash windows to front aspect, fireplace, two storage cupboards radiator.

Bedroom 2

uPVC double glazed sash window to rear aspect, fireplace, radiator.

Bedroom 3

uPVC double glazed sash window to front aspect, radiator, loft access.

Bathroom

uPVC double glazed sash window to rear aspect, panel bath with shower over, fully tiled, low level toilet, hand wash basin, heated towel rail.

Garden

Garden is laid to patio, has raised borders, shed and benefits from side access.

- Three bedrooms – two doubles and one single
 - Contemporary navy kitchen with integrated appliances
 - Stylish and modern upstairs bathroom
 - Bright, well-maintained interior with excellent flow
- Exposed floorboards, feature fireplaces & original hallway tiles
 - Lovely countryside views from the kitchen window
 - End of terrace position with side access to the rear garden
 - Immaculate condition throughout

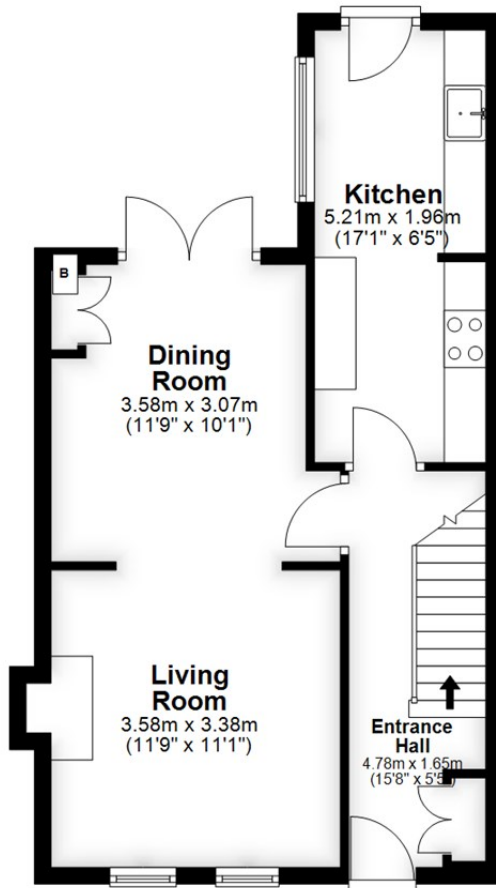


£330,000



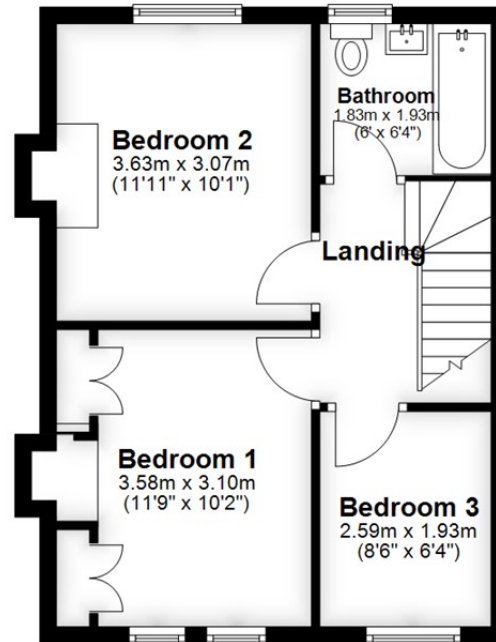
Ground Floor

Approx. 42.9 sq. metres (461.7 sq. feet)



First Floor

Approx. 37.7 sq. metres (405.6 sq. feet)



Total area: approx. 80.6 sq. metres (867.3 sq. feet)

HENLEAZE - 0117 2130777
henleaze@goodmanlilley.co.uk

PORTISHEAD - 01275 430440
sales@goodmanlilley.co.uk

SHIREHAMPTON - 0117 2130333
shire@goodmanlilley.co.uk

Zoopla.co.uk

rightmove



WWW.GOODMANLILLEY.CO.UK

These particulars are for general guidance only. They do not form or constitute any part of an offer or contract. Goodman & Lilley has not carried out structural surveys of the property. The services, appliances or specific fittings mentioned in these details have not been tested. Every attempt is made to ensure accuracy, however all photographs, measurements, floor plans and distances are for illustrative purposes only. They must not be relied upon when purchasing carpets and or other fixtures & fittings. Lease details, service charges and ground rents are given as a guide only. They should be checked and confirmed by a licensed solicitor prior to exchange of contracts. The copyright of all details, photographs and floor plans remain exclusive to Goodman & Lilley.