



681 PORTWAY,  
AVONMOUTH, BS11 9LL

---

GOODMAN  
& LILLEY



WELCOME TO THIS CHARMING 3-BEDROOM SEMI-DETACHED HOUSE LOCATED IN THE SOUGHT-AFTER AREA OF "THE PORTWAY", AVONMOUTH. THIS DELIGHTFUL PROPERTY BOASTS A CORNER PLOT, OFFERING A SENSE OF SPACE AND PRIVACY THAT IS TRULY UNIQUE.

Hallway

Entrance to hallway via uPVC door, stairs rising to first floor.

Living Room

uPVC double glazed window to front aspect, opening into dining room, feature fireplace with electric fire.

Kitchen/Dining Room

Two windows to rear aspect, fitted with a range of wall and base units with roll top work surfaces. electric hob and oven with extractor over. Stainless steel sink with mixer tap over. Door leading into utility room and wc.

Utility

Window to side aspect, plumbing for washing machine, uPVC door leading to side and rear garden

WC

Window to side aspect, high level wc

Landing

Window to side aspect, access to loft space.

Bedroom 1

Window to front aspect, radiator, storage cupboards

Bedroom 2

Window to rear aspect, radiator, storage cupboard

Bathroom

Window to rear aspect, Panel bath with shower over, low level wc, pedestal sink,

Bedroom 3

Window to front aspect, radiator

Gardens

There are gardens to the front, rear and side. The rear is easily maintained by patio slabs, the side has a lovely private lawned area with access to the front.

Garage and Parking

There is a detached garage to the front which has power and lighting in with additional parking for another 2 cars.

- 3 Bedroom Semi-Detached House
- Separate Reception Rooms
- Close to the Village of Avonmouth
- Sunny Gardens
- Owned Solar Panels

- Big Corner Plot
- Close to Local Schools
- BISF House
- Garage and Parking
- Double Glazing and Gas Heating System



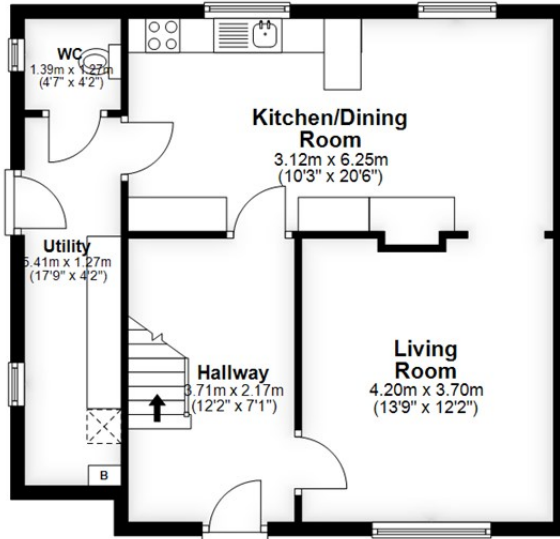
£279,950





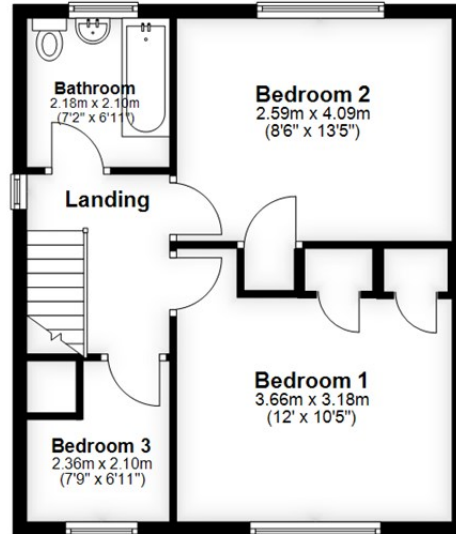
### Ground Floor

Approx. 53.6 sq. metres (577.1 sq. feet)



### First Floor

Approx. 38.8 sq. metres (418.1 sq. feet)



Total area: approx. 92.5 sq. metres (995.2 sq. feet)

**HENLEAZE** - 0117 2130777  
[henleaze@goodmanlilley.co.uk](mailto:henleaze@goodmanlilley.co.uk)

**PORTISHEAD** - 01275 430440  
[sales@goodmanlilley.co.uk](mailto:sales@goodmanlilley.co.uk)

**SHIREHAMPTON** - 0117 2130333  
[shire@goodmanlilley.co.uk](mailto:shire@goodmanlilley.co.uk)

Zoopla.co.uk

rightmove



[WWW.GOODMANLILLEY.CO.UK](http://WWW.GOODMANLILLEY.CO.UK)

These particulars are for general guidance only. They do not form or constitute any part of an offer or contract. Goodman & Lilley has not carried out structural surveys of the property. The services, appliances or specific fittings mentioned in these details have not been tested. Every attempt is made to ensure accuracy, however all photographs, measurements, floor plans and distances are for illustrative purposes only. They must not be relied upon when purchasing carpets and or other fixtures & fittings. Lease details, service charges and ground rents are given as a guide only. They should be checked and confirmed by a licensed solicitor prior to exchange of contracts. The copyright of all details, photographs and floor plans remain exclusive to Goodman & Lilley.