



19 PASSAGE LEAZE,
SHIREHAMPTON, BS11 9QL

GOODMAN
& LILLEY



A BEAUTIFULLY EXTENDED CHARACTER HOME WITH SPACE, STYLE & SOUL – PASSAGE LEAZE, SHIREHAMPTON

Property Description

A Beautifully Extended Character Home with Space, Style & Soul
– Passage Leaze, Shirehampton

This stunning 3-bedroom end of terrace with a loft room is a true one-off — homes like this rarely come to market.

Tucked away on Passage Leaze, one of the most desirable and well-established roads in Shirehampton, this home is bursting with character, natural light, and modern touches, all while offering plenty of space for a growing family or anyone looking for flexible, stylish living.

Step inside and fall in love with the gorgeous rear extension, flooded with light from Velux windows and finished with oak doors and wooden floorboards that add a real sense of quality. The dining area is a warm, inviting space with a feature log burner, perfect for cosy evenings or entertaining friends. A separate front lounge offers a peaceful retreat, while the contemporary downstairs shower room adds everyday convenience.

Positioned just off the dining area, the contemporary kitchen is in great condition and finished in a stylish, popular colour that complements the home beautifully. With a smart layout and clean design, it's the perfect bridge between the cosy dining space and the light-filled rear extension — making it not just a practical space, but one that feels naturally connected to the flow of the home. Whether you're cooking for the family or entertaining guests, this kitchen is a joy to be in.

Upstairs, you'll find three bedrooms, each with their own character — from original cupboard spaces to charming latch doors — and a well-appointed family bathroom complete with rainfall shower. But the real surprise? A versatile loft room with stunning views and eaves storage — potential for a fourth bedroom, home office, or creative studio.

Outside, the rear garden is a dream, with patio space for relaxing, a lawn for the kids to play, and a raised vegetable patch for those with green fingers. There's off-street parking at the front, plus gated access to a detached rear garage.

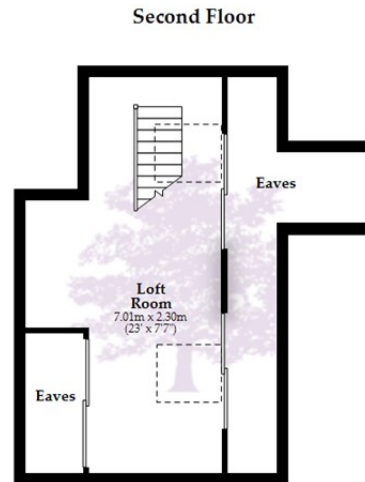
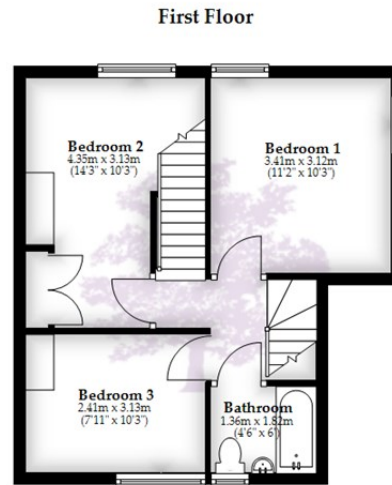
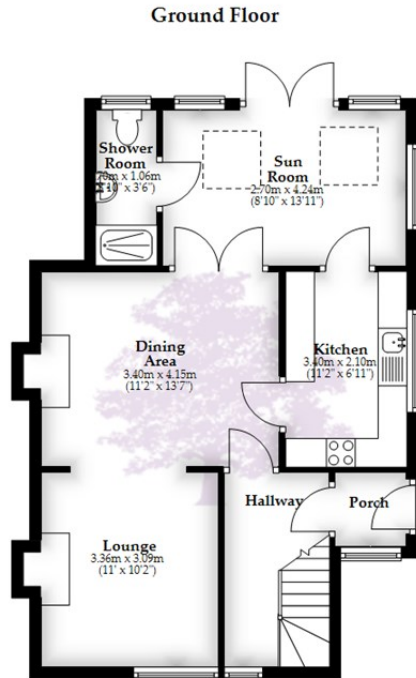
This isn't just a house — it's a home that tells a story, with warmth, personality, and potential around every corner. Whether you're upsizing, relocating or simply ready for somewhere special, this property needs to be seen to be believed.

-
- Beautifully extended 3-bedroom end of terrace home with loft room
 - Large rear garden with patio, lawn and raised vegetable patch – ideal for keen gardeners
 - Well maintained throughout and ready to move into, with room to add your own style
 - Original charm throughout – latch doors, built-in cupboards & oak internal doors
 - Highly sought-after location on Passage Leaze, Shirehampton
 - Stunning rear extension with Velux windows – a bright, show-stopping living space
 - Off-street parking at the front plus detached rear garage with gated access
 - Close to local schools, amenities and transport links – ideal for families and commuters
 - Two bathrooms – family bathroom upstairs plus a stylish downstairs shower room
 - Feature log burner in a cosy dining area full of character



£465,000





Total area: approx. 124.5 sq. metres (1339.9 sq. feet)

Whilst every attempt has been made to ensure accuracy of the floor plan all measurements are approximate and no responsibility is taken for any error, omission or measurement.
Plan produced using PlanUp.

HENLEAZE - 0117 2130777
henleaze@goodmanlilley.co.uk

PORTISHEAD - 01275 430440
sales@goodmanlilley.co.uk

SHIREHAMPTON - 0117 2130333
shire@goodmanlilley.co.uk

Zoopla.co.uk

rightmove



WWW.GOODMANLILLEY.CO.UK

These particulars are for general guidance only. They do not form or constitute any part of an offer or contract. Goodman & Lilley has not carried out structural surveys of the property. The services, appliances or specific fittings mentioned in these details have not been tested. Every attempt is made to ensure accuracy, however all photographs, measurements, floor plans and distances are for illustrative purposes only. They must not be relied upon when purchasing carpets and or other fixtures & fittings. Lease details, service charges and ground rents are given as a guide only. They should be checked and confirmed by a licensed solicitor prior to exchange of contracts. The copyright of all details, photographs and floor plans remain exclusive to Goodman & Lilley.