



HOMELEA BRISTOL ROAD,
PORTISHEAD, BS20 6QG

GOODMAN
& LILLEY



A CHARACTERFUL TWO-BEDROOM COTTAGE WITH A DELIGHTFUL REAR GARDEN, OFFERING STUNNING VIEWS ACROSS THE GORDANO VALLEY TOWARDS CLAPTON-IN-GORDANO. BURSTING WITH PERIOD CHARM AND ORIGINAL FEATURES, THIS LOVELY HOME IS IDEALLY SITUATED WITHIN CLOSE WALKING DISTANCE OF LOCAL AMENITIES.

This stunning character cottage is set within a generous and private plot. The ground floor boasts high ceilings throughout, creating a wonderful sense of space. There is a spacious lounge with a front-aspect window with wooden shutter and a charming feature fireplace, a kitchen/breakfast room with underfloor heating, Belfast sink and induction hob whilst overlooking the garden, and a separate utility room with direct garden access.

Upstairs, you'll find two excellent-sized double bedrooms bth with oak flooring. The rear bedroom enjoys breathtaking views across the Gordano Valley towards Clapton-in-Gordano. The character-style bathroom is fitted with a three-piece suite, comprising a freestanding bath, low-level WC, pedestal sink and underfloor heating.

The crowning glory of this delightful property is its beautifully landscaped garden. Immaculately presented, it features an array of colourful planted borders, a vegetable garden with a vintage-style greenhouse, and a summerhouse perfectly positioned to enjoy the views. A private jetty provides direct access to the river, which the current owners use for kayaking and paddleboarding.

To the front, the property benefits from off-street parking for three vehicles and access to the carport.

Additional information

Tenure: freehold

Local Authority: North Somerset Council Tel: 01934 888888

Council Tax Band: C

Services: Mains; Electric, Water, Drainage.

All viewings strictly by appointment with sole agent Goodman & Lilley: 01275 430440

-
- Character Semi-Detached Property
 - Jetty Onto The Canal
 - Lounge With Character Fireplace
 - Utility Room
 - Driveway Parking For Three
- Stunning Location With Countryside Views
 - Two Large Double Bedrooms
 - Kitchen/Breakfast Room Overlooking The Garden
 - Single Carport
 - Stunning Rear Garden

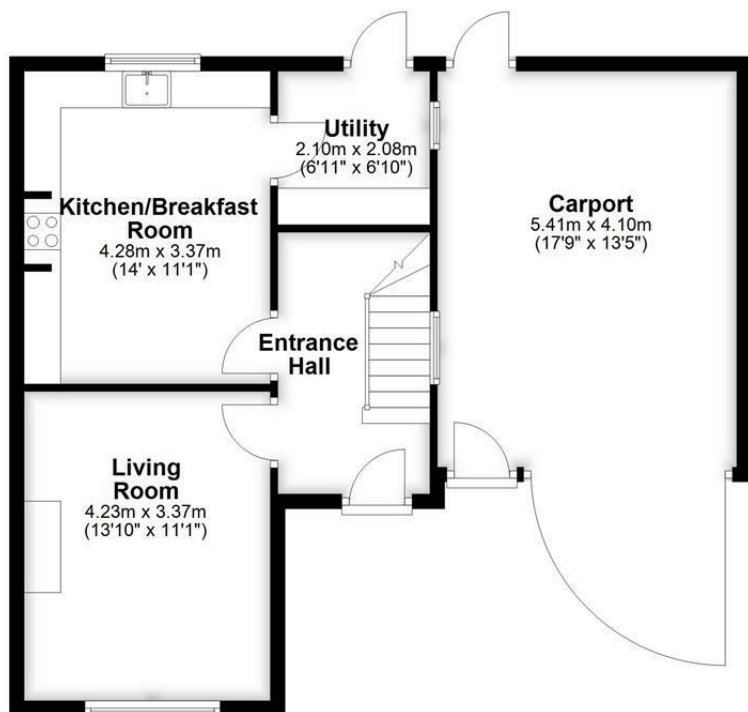


GUIDE PRICE £450,000



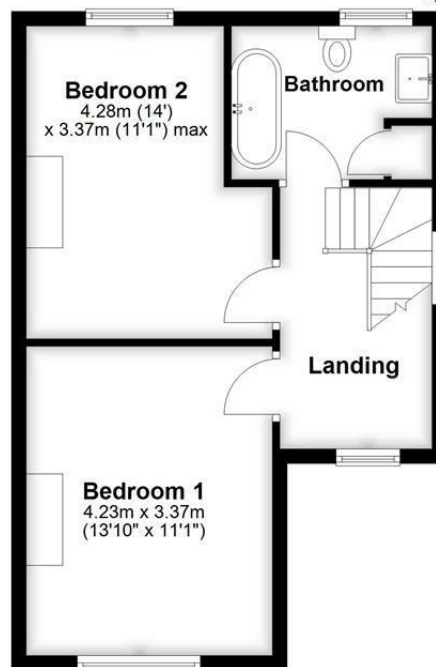
Ground Floor

Approx. 64.4 sq. metres (692.9 sq. feet)



First Floor

Approx. 41.6 sq. metres (448.2 sq. feet)



Total area: approx. 106.0 sq. metres (1141.1 sq. feet)

HENLEAZE - 0117 2130777

henleaze@goodmanlilley.co.uk

PORTISHEAD - 01275 430440

sales@goodmanlilley.co.uk

SHIREHAMPTON - 0117 2130333

shire@goodmanlilley.co.uk

Zoopla.co.uk

rightmove



WWW.GOODMANLILLEY.CO.UK

These particulars are for general guidance only. They do not form or constitute any part of an offer or contract. Goodman & Lilley has not carried out structural surveys of the property. The services, appliances or specific fittings mentioned in these details have not been tested. Every attempt is made to ensure accuracy, however all photographs, measurements, floor plans and distances are for illustrative purposes only. They must not be relied upon when purchasing carpets and or other fixtures & fittings. Lease details, service charges and ground rents are given as a guide only. They should be checked and confirmed by a licensed solicitor prior to exchange of contracts. The copyright of all details, photographs and floor plans remain exclusive to Goodman & Lilley.