



Flat 1 Brunel Court, Portishead, BS20 7JH
Guide Price £265,000

GOODMAN
& LILLEY



THE INDEPENDENT SALES, LETTINGS & LAND AGENTS

Flat 1 Brunel Court, Portishead, BS20 7JH

A beautifully maintained two-bedroom ground floor apartment in the ever-popular Brunel Court development. Offering direct access to attractive communal gardens, this bright and accessible home is just a short stroll from Waitrose and the vibrant Marina.

- Ground Floor Two Bedroom Apartment
- Direct Garden Access
- Separate Modern Kitchen
- Communal Facilities
- Closest Retirement Development To The Marina
- Retirement Development
- Large Lounge/Diner
- Shower Room
- In House Manager
- No Onward Chain

Situated in the ever-popular Brunel Court development, this beautifully presented two-bedroom ground floor apartment offers a perfect blend of comfort, convenience, and lifestyle. Ideally located within easy walking distance to Waitrose and the picturesque Portishead Marina, the property is ideal for first-time buyers, downsizers, or investors alike.

The apartment features a spacious open-plan living area with a well-appointed kitchen, two generous bedrooms, and a modern bathroom. Large windows provide plenty of natural light, while the ground floor position offers easy access and a sense of privacy. With its prime location and sought-after setting, this is a rare opportunity not to be missed.

Brunel Court offers excellent communal amenities, including a spacious residents' lounge with a conservatory that hosts regular events such as coffee mornings and book clubs. There's a beautifully maintained communal garden with benches, a laundry room, an on-site manager for day-to-day support, and a guest suite for visiting friends or family.

Agent Notes

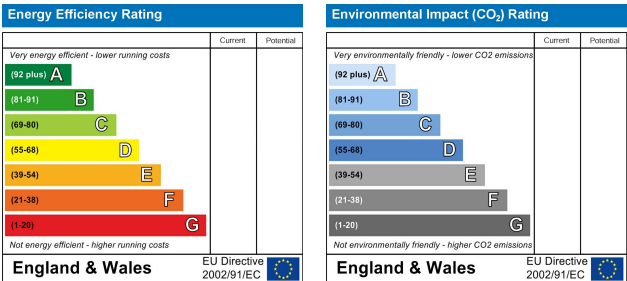
Tenure: Leasehold
Ground Rent-£200 Per annum
Service charge £1392.71 x2
Lease length 104 years left on lease

Local Authority: North Somerset Council Tel: 01934 888888

Council Tax Band: C

Services: All mains services connected (but should be checked with your legal representatives)

All viewings strictly by appointment with the agent
Goodman & Lilley - 01275 430440



Portishead

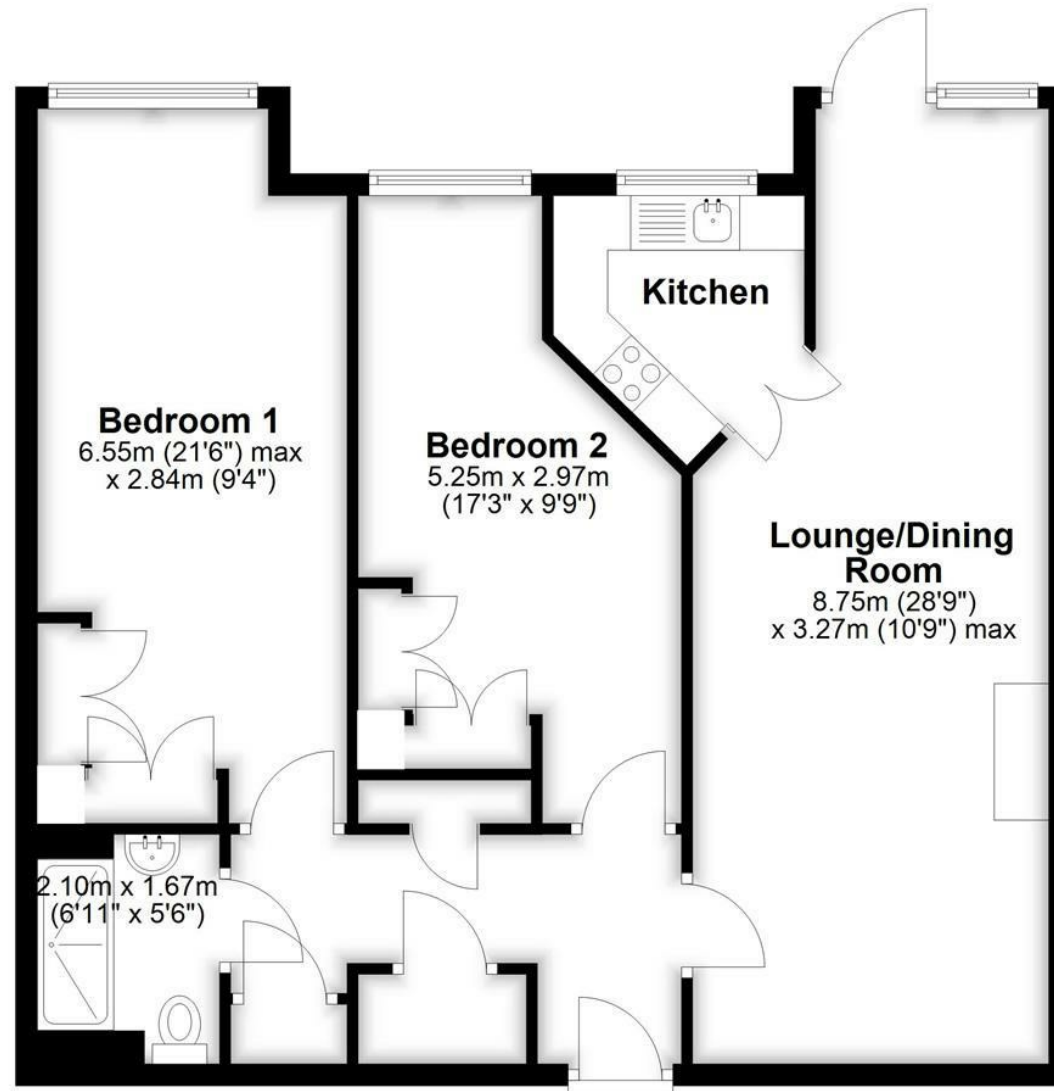
Rembrandt House, 36 High Street, Portishead
North Somerset, BS20 6EN
01275 430 440

www.goodmanlilley.co.uk



Ground Floor

Approx. 77.2 sq. metres (830.9 sq. feet)



Total area: approx. 77.2 sq. metres (830.9 sq. feet)



These particulars are for general guidance only. They do not form or constitute any part of an offer or contract. Goodman & Lilley has not carried out structural surveys of the property. The services, appliances or specific fittings mentioned in these details have not been tested. Every attempt is made to ensure accuracy, however all photographs, measurements, floor plans and distances are for illustrative purposes only. They must not be relied upon when purchasing carpets and or other fixtures and fittings. Lease details, service charges and ground rents are given as a guide only. They should be checked and confirmed by a licensed solicitor prior to exchange of contracts. The copyright of all details, photographs and floor plans remain exclusive to Goodman & Lilley.