



Avoca 14 The Bay, Clevedon, BS21 7GX
Guide Price £145,000

GOODMAN
& LILLEY



THE INDEPENDENT SALES, LETTINGS & LAND AGENTS

Avoca 14 The Bay, Clevedon, BS21 7GX

This well-positioned over 55's detached park home offers comfortable living in a peaceful setting, boasting fantastic estuary views. The property features two well-proportioned bedrooms, a bright and airy living space, and a fitted kitchen, all designed for ease and convenience.

- Detached Park Home Over 55's Only
- Stunning Estuary Views
- Spacious Dual Aspect Living Room
- Separate Utility Room
- Allocated Parking
- Two Double Bedrooms
- Master Bedroom With En-suite & Dressing Room
- Modern Kitchen
- No Onward Chain
- Well Presented Throughout

Step inside via the entrance hall, where doors lead to the main living spaces. The bright and welcoming living room enjoys plenty of natural light, while a separate dining room flows seamlessly into the modern fitted kitchen. The kitchen in turn links back to the utility room, which provides access to both the garden and the entrance hall, creating a practical and well-connected layout.

The home offers two generously sized double bedrooms. The master bedroom benefits from a dedicated dressing area and a stylish en-suite shower room, while the second double bedroom is served by the family bathroom.

Outside, an easy-to-maintain garden wraps around the property, perfectly designed for low-maintenance enjoyment. From here, you can take in the fantastic estuary views, making this home a peaceful and scenic retreat.

Offered to the market with no onward chain, this property presents an excellent opportunity for a straightforward move.

Additional Information

Tenure: Freehold

Local Authority: North Somerset Council Tel: 01934 888888

Council Tax Band: A

Services: Electric, Gas, Water, Mains Drainage

All viewings strictly by appointment with sole agent Goodman & Lilley: 01275 430440

Portishead

Rembrandt House, 36 High Street, Portishead
North Somerset, BS20 6EN

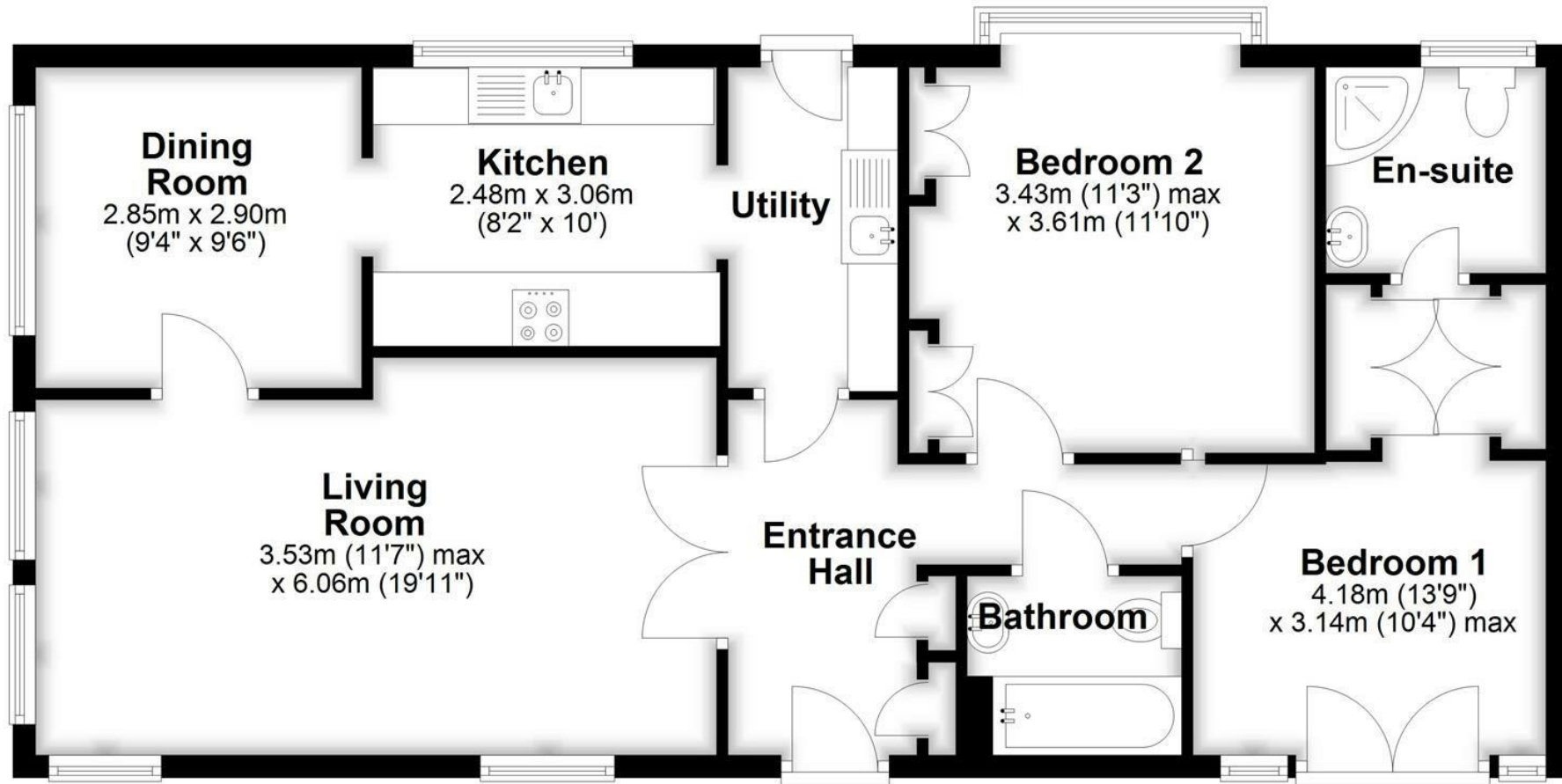
01275 430 440

www.goodmanlilley.co.uk



Ground Floor

Approx. 82.4 sq. metres (887.0 sq. feet)



Total area: approx. 82.4 sq. metres (887.0 sq. feet)



These particulars are for general guidance only. They do not form or constitute any part of an offer or contract. Goodman & Lilley has not carried out structural surveys of the property. The services, appliances or specific fittings mentioned in these details have not been tested. Every attempt is made to ensure accuracy, however all photographs, measurements, floor plans and distances are for illustrative purposes only. They must not be relied upon when purchasing carpets and or other fixtures and fittings. Lease details, service charges and ground rents are given as a guide only. They should be checked and confirmed by a licensed solicitor prior to exchange of contracts. The copyright of all details, photographs and floor plans remain exclusive to Goodman & Lilley.