



LOWER BURLINGTON ROAD PORTISHEAD BS20 7BP

---

GOODMAN  
& LILLEY





A well presented three bedroom, top floor apartment benefitting from having a garage and being conveniently situated on the ever popular Port Marine development.

Sit back and enjoy the vibrant atmosphere Marina living has to offer, the convenient location provides ease of access to the nearby Marina & coastal walks, London Square gardens, leisure centre, Quayside bars and restaurants.



The well planned layout offers open plan living, a kitchen breakfast room and three bedrooms, master with en-suite bathroom and shower room.

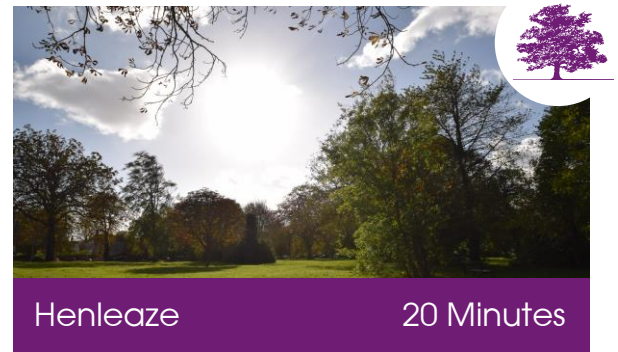
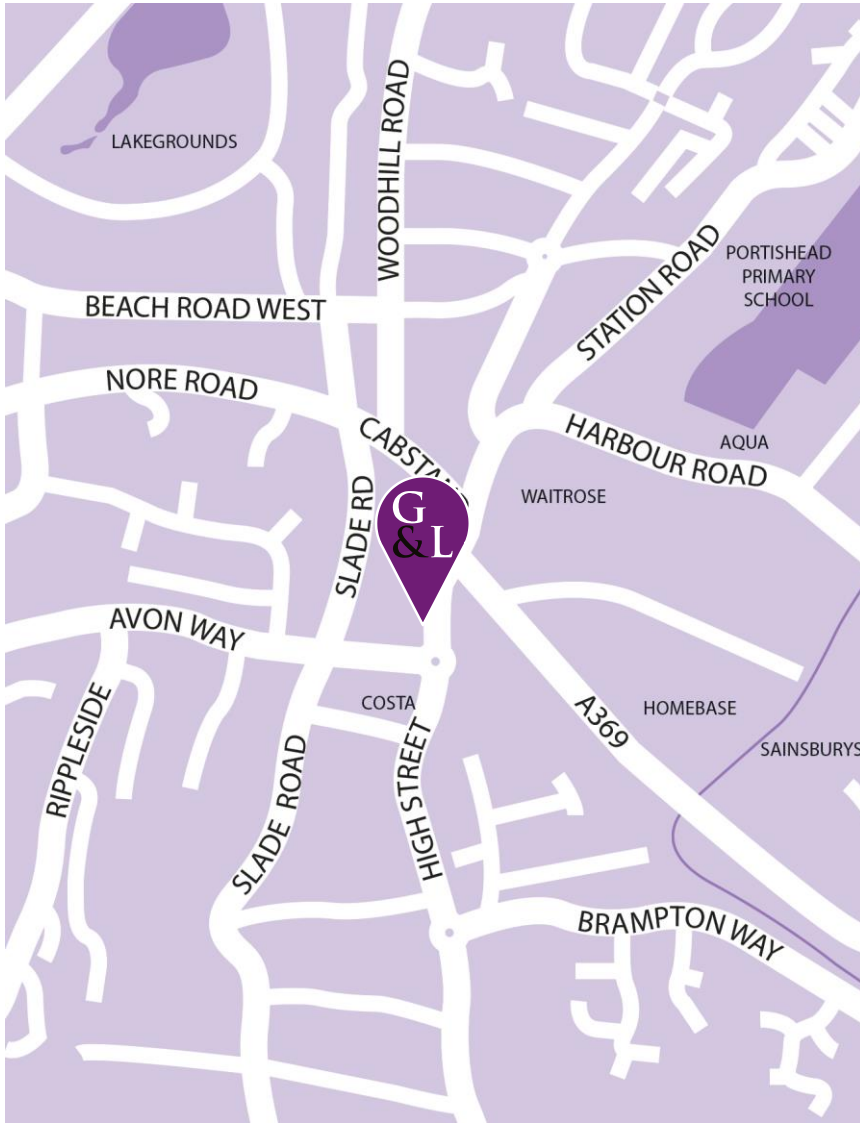
The apartment offers great space for anyone looking for Marina living.



- 
- \* Penthouse Apartment
  - \* Three Bedrooms
  - \* Lounge/Diner
  - \* Garage & Parking
  - \* Marina Views
  - \* Chain Free
  - \* Close to local amenities



ASKING PRICE £285,000



TRANSPORT

-  Bristol Airport **25** Minutes
-  M5, Junction 19 **7** Minutes
-  Temple Meads **30** Minutes

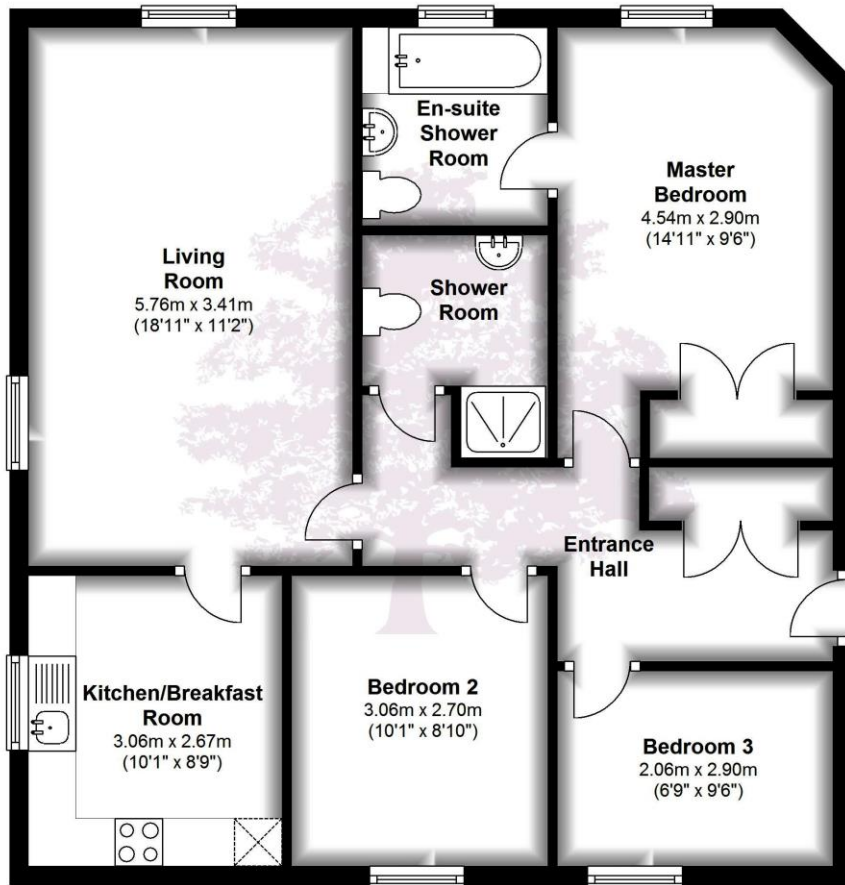
EPC BANDS C & C

CONNECT WITH US

-  Goodman-Lilley
-  @Goodman\_Lilley

## Ground Floor

Approx. 74.9 sq. metres (806.7 sq. feet)



Total area: approx. 74.9 sq. metres (806.7 sq. feet)

HENLEAZE - 0117 2130777  
henleaze@goodmanlilley.co.uk

PORTISHEAD - 01275 430440  
sales@goodmanlilley.co.uk



WWW.GOODMANLILLEY.CO.UK

These particulars are for general guidance only. They do not form or constitute any part of an offer or contract. Goodman & Lilley has not carried out structural surveys of the property. The services, appliances or specific fittings mentioned in these details have not been tested. Every attempt is made to ensure accuracy, however all photographs, measurements, floor plans and distances are for illustrative purposes only. They must not be relied upon when purchasing carpets and or other fixtures & fittings. Lease details, service charges and ground rents are given as a guide only. They should be checked and confirmed by a licensed solicitor prior to exchange of contracts. The copyright of all details, photographs and floor plans remain exclusive to Goodman & Lilley.