



56 SLADE ROAD,
PORTISHEAD, BS20 6BW

GOODMAN
& LILLEY







56 SLADE ROAD

PORTISHEAD BS20 6BW

GUIDE PRICE
£375,000

A stunning character cottage set just off the High Street, immaculately presented throughout. Ideally located close to amenities, this charming home boasts generously sized rooms and a wonderful blend of style and convenience.

On the ground floor, you are welcomed into an inviting entrance hall that offers a glimpse straight through to the garden. To the front of the property lies a reception room, currently used as a dining room. The hallway then opens directly into a second reception room – a cosy yet light-filled living room. The modern kitchen enjoys a wonderful outlook over the rear garden and is fitted with a breakfast bar, making it both stylish and practical. From here, a door leads into the conservatory, which also accommodates the utility area.

Local Authority: North Somerset Council, Tel: 01934 888888

Council Tax Band: B

Services: All mains services connected

Upstairs, the first floor offers two exceptionally spacious double bedrooms, each with built-in storage. A well-appointed bathroom, fitted with a four-piece suite, includes both a separate shower and a bathtub.

To the rear, the enchanting garden features a range of mature trees, a patio area perfect for relaxing, and a useful shed. Neighbouring properties have created off-road parking to the rear by reclaiming part of their gardens, and this may also be a potential option here, subject to the necessary planning permissions and consents.

Additional Information

M5 (J19) – 3 miles, M4 (J20) – 11 miles, Bristol Parkway Station – 14 miles, Bristol Temple Meads Station – 10.5 miles, Bristol Airport – 12 miles (distances are approximate)

Tenure: Freehold

- Terrace Character Cottage
- High Ceilings
- Mature, Private Garden
- Two Large Double Bedrooms
- Diverse & Spacious Layout
- Close To The High Street
- Modern Country Style Kitchen
- Wood Burning Stove
- Potential To Add Off Road Parking (Subject To Necessary Planning & Consent)
- Four Piece Bathroom Suite

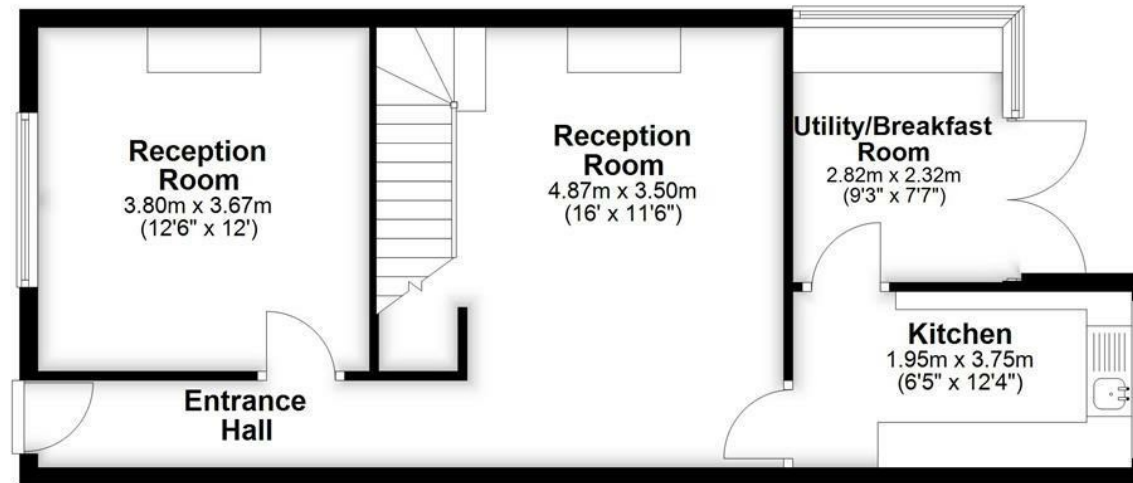






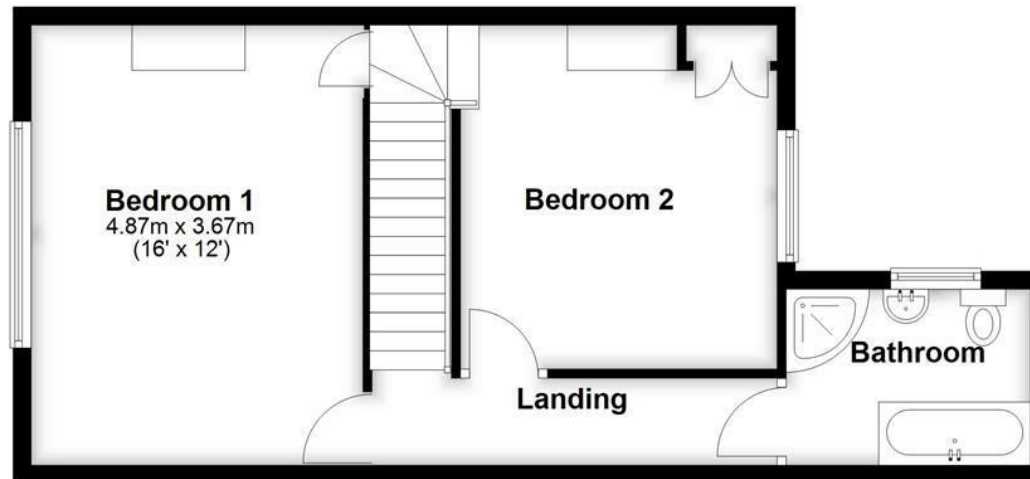
Ground Floor

Approx. 54.7 sq. metres (588.9 sq. feet)



First Floor

Approx. 45.6 sq. metres (490.9 sq. feet)



Total area: approx. 100.3 sq. metres (1079.8 sq. feet)

HENLEAZE

156 Henleaze Road
Henleaze BS9 4NB
henleaze@goodmanlilley.co.uk

0117 213 0777

PORTISHEAD

36 High Street
Portishead BS20 6EN
sales@goodmanlilley.co.uk

01275 430 440

SHIREHAMPTON

9 High Street
Shirehampton BS11 0DT
shire@goodmanlilley.co.uk

0117 213 0333

LETTINGS

lettings@goodmanlilley.co.uk

01275 299 010

0117 213 0101

LAND & NEW HOMES

156 Henleaze Road
Henleaze BS9 4NB
LNH@goodmanlilley.co.uk

0117 213 0151



These particulars are for general guidance only. They do not form or constitute any part of an offer or contract. Goodman & Lilley has not carried out structural surveys of the property. The services, appliances or specific fittings mentioned in these details have not been tested. Every attempt is made to ensure accuracy, however all photographs, measurements, floor plans and distances are for illustrative purposes only. They must not be relied upon when purchasing carpets and or other fixtures & fittings. Lease details, service charges and ground rents are given as a guide only. They should be checked and confirmed by a licensed solicitor prior to exchange of contracts. The copyright of all details, photographs and floor plans remain exclusive to Goodman & Lilley.



rightmove

Zoopla