



11 WIGTON CRESCENT,
SOUTHMEAD, BS10 6DU

GOODMAN
& LILLEY



A THREE BEDROOM END TERRACE HOME WITH GARAGE, DRIVEWAY PARKING AND WONDERFUL GARDENS SITUATED CLOSE TO LOCAL EMPLOYERS, SUCH AS AIRBUS AND SOUTHMEAD HOSPITAL, GOOD LOCAL SCHOOLS AND LOCAL BUS ROUTES TO THE CITY CENTRE, GLOUCESTER ROAD AND CRIBBS CAUSEWAY.

Accommodation

Please see the floorplan for room measurements and the property layout.

Entrance Porch

With door from the front garden and door to the entrance hall.

Entrance Hallway

Stairs to the first floor and doors to:

Sitting Room

Double glazed window to the front aspect, radiator and a feature gas fire.

Kitchen

Fitted with built in storage, work surfacing over, tiled surrounds, sink unit, gas cooker, plumbing and space for a washing machine, double glaze window to the side and rear, double glazed door out to the rear porch and door to the dining room. Wall mounted gas central heating boiler.

Dining Room

Double glazed window to the rear, radiator.

Rear Porch

With doors to a workshop, storage and a downstairs toilet, and with door out to the rear garden.

Workshop

With power and windows to the side and the rear.

WC

Fitted toilet, window to the side.

First Floor

Landing

Built in storage, doors to:

Bedroom One

Double glazed window to the rear, fitted and built in storage, radiator.

Bedroom Two

Double glazed window to the front, built in storage, radiator.

Bedroom Three

Built in storage, double glazed window to the front aspect, radiator

Shower Room

Walk in wet room with tiled walls, shower enclosure, toilet and wash basin, double glazed window to the rear and radiator.

Outside

Gardens

The property is set in above average sized gardens to the front, side and rear comprising of lawn areas and a patio.

Garage and Driveway

There is a detached single garage located to the side of the property and accessed by a driveway.

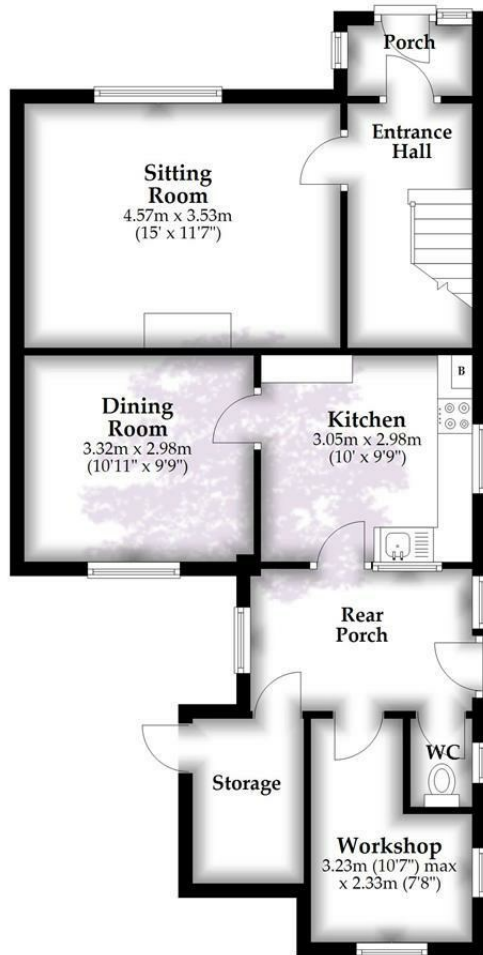
- Three Bedroom End of Terrace Home
- Detached Garage
- Gas Heating
- Generous Gardens
- Double Glazing
- Viewing Highly Recommended



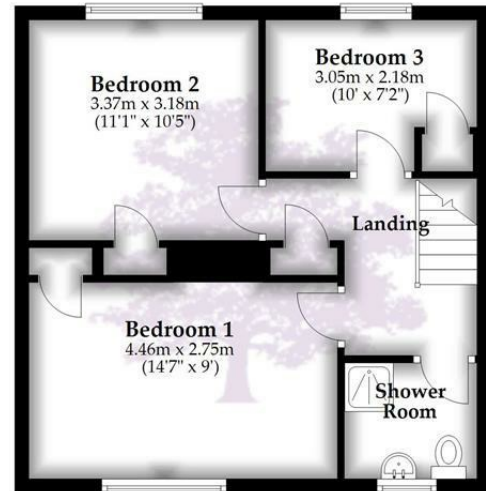
GUIDE PRICE £315,000



Ground Floor



First Floor



Total area: approx. 106.3 sq. metres (1144.1 sq. feet)

Whilst every attempt has been made to ensure accuracy of the floor plan all measurements are approximate and no responsibility is taken for any error, omission or measurement.

Plan produced using PlanUp.

HENLEAZE - 0117 2130777
henleaze@goodmanlilley.co.uk

PORTISHEAD - 01275 430440
sales@goodmanlilley.co.uk

SHIREHAMPTON - 0117 2130333
shire@goodmanlilley.co.uk

[Zoopla.co.uk](https://www.zoopla.co.uk)

[rightmove](https://www.rightmove.co.uk)



[WWW.GOODMANLILLEY.CO.UK](https://www.GOODMANLILLEY.CO.UK)

These particulars are for general guidance only. They do not form or constitute any part of an offer or contract. Goodman & Lilley has not carried out structural surveys of the property. The services, appliances or specific fittings mentioned in these details have not been tested. Every attempt is made to ensure accuracy, however all photographs, measurements, floor plans and distances are for illustrative purposes only. They must not be relied upon when purchasing carpets and or other fixtures & fittings. Lease details, service charges and ground rents are given as a guide only. They should be checked and confirmed by a licensed solicitor prior to exchange of contracts. The copyright of all details, photographs and floor plans remain exclusive to Goodman & Lilley.