



131 REDLAND ROAD,  
REDLAND, BS6 6XX

---

GOODMAN  
& LILLEY



A SUPERB TWO DOUBLE BEDROOM VICTORIAN PERIOD APARTMENT IN POPULAR REDLAND WITH COMMUNAL REAR GARDENS, A SOUTH WESTERLY FACING SITTING / DINING ROOM WITH ROOF TOP VIEWS AND SEPARATE KITCHEN.

Location

A popular location within 0.5 miles of Whiteladies Road and the green spaces of Redland Green and Durdham Downs - local shopping available at Chandos Road within 300 metres whilst a very handy 'pint of milk and paper shop' and the Shakespeare Tavern is just over the road.

Accommodation

Entrance

Via a Communal front door to hall and stairs to the top floor with entrance door to flat.

Hallway

Built in storage cupboard and doors to:

Sitting / Dining Room

A wonderful main reception room with superb roof top views from a feature arched front window , radiator, space for table.

Kitchen

A separate fitted kitchen with window to the front, sink, integrated cooker, hob and hood, space for fridge/freezer and dish washer, wall mounted gas boiler.

Bedroom 1

The first of the two double bedrooms with built in storage over the stairs, radiator, window to the rear.

Bedroom 2

Double bedroom with window to the rear and radiator.

Bathroom

Fitted three piece suite comprising bath with shower over, WC and wash basin, window to the side.

Outisde

There is a communal rear garden.

- Top Floor Apartment
  - 16 ft Sitting / Dining Room
  - Superb Location
  - Communal Garden
- Two Double Bedrooms
  - Separate Kitchen
  - Close To Whiteladies Road
  - Viewing Recommended



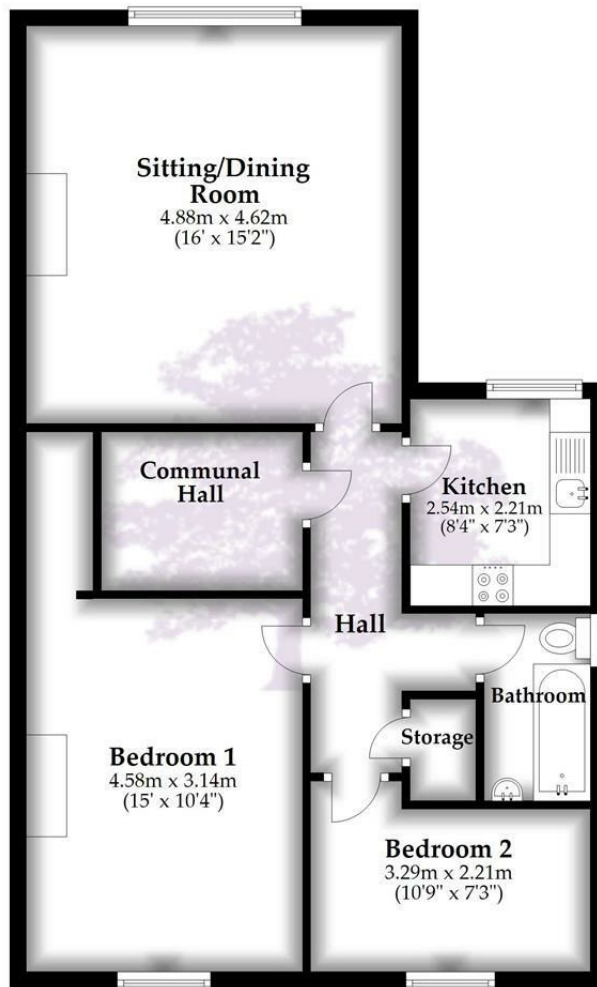
£325,000





## Top Floor

Approx. 69.9 sq. metres (752.6 sq. feet)



Total area: approx. 69.9 sq. metres (752.6 sq. feet)

**HENLEAZE** - 0117 2130777  
henleaze@goodmanlilley.co.uk

**PORTISHEAD** - 01275 430440  
sales@goodmanlilley.co.uk

**SHIREHAMPTON** - 0117 2130333  
shire@goodmanlilley.co.uk

Zoopla.co.uk

rightmove



**WWW.GOODMANLILLEY.CO.UK**

These particulars are for general guidance only. They do not form or constitute any part of an offer or contract. Goodman & Lilley has not carried out structural surveys of the property. The services, appliances or specific fittings mentioned in these details have not been tested. Every attempt is made to ensure accuracy, however all photographs, measurements, floor plans and distances are for illustrative purposes only. They must not be relied upon when purchasing carpets and or other fixtures & fittings. Lease details, service charges and ground rents are given as a guide only. They should be checked and confirmed by a licensed solicitor prior to exchange of contracts. The copyright of all details, photographs and floor plans remain exclusive to Goodman & Lilley.