



29 Mansell Road, Bristol, BS34 5QS

£228,000

GOODMAN  
& LILLEY



THE INDEPENDENT SALES, LETTINGS & LAND AGENTS

## 29 Mansell Road, Bristol, BS34 5QS

Welcome to this charming two-bedroom upper floor apartment located on Mansell Road in the sought-after area of Patchway, Bristol. This purpose-built flat offers a modern interior that is both stylish and functional, making it an ideal choice for individuals or small families seeking comfort and convenience.

As you enter the property, you will be greeted by a spacious reception room that provides a warm and inviting atmosphere, perfect for relaxing or entertaining guests. The well-appointed kitchen is designed with contemporary fittings, ensuring that meal preparation is a delight.

The two bedrooms are generously sized, offering ample space for rest and relaxation. The bathroom is tastefully designed, featuring modern fixtures that enhance the overall appeal of the apartment.

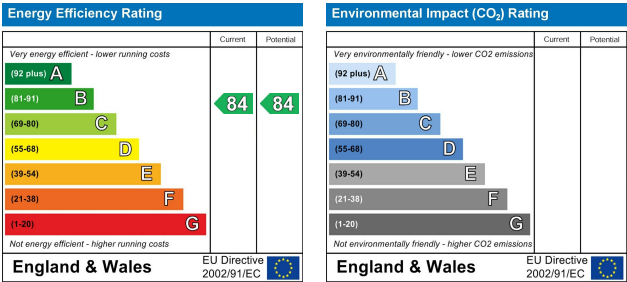
One of the standout features of this property is the lovely balcony, which provides a perfect spot to enjoy your morning coffee or unwind after a long day, all while taking in the pleasant views of the surrounding area. Additionally, the large car port offers convenient parking, a valuable asset in this desirable location.

Situated in Patchway, this apartment benefits from excellent transport links and local amenities, making it an ideal base for those who commute or enjoy the vibrant lifestyle that Bristol has to offer.

In summary, this two-bedroom flat on Mansell Road presents a wonderful opportunity to acquire a modern and comfortable home in a prime location. Do not miss the chance to make this delightful property your own.

- Desirable area
- Close to amenities
- High energy efficiency
- Viewing recommended

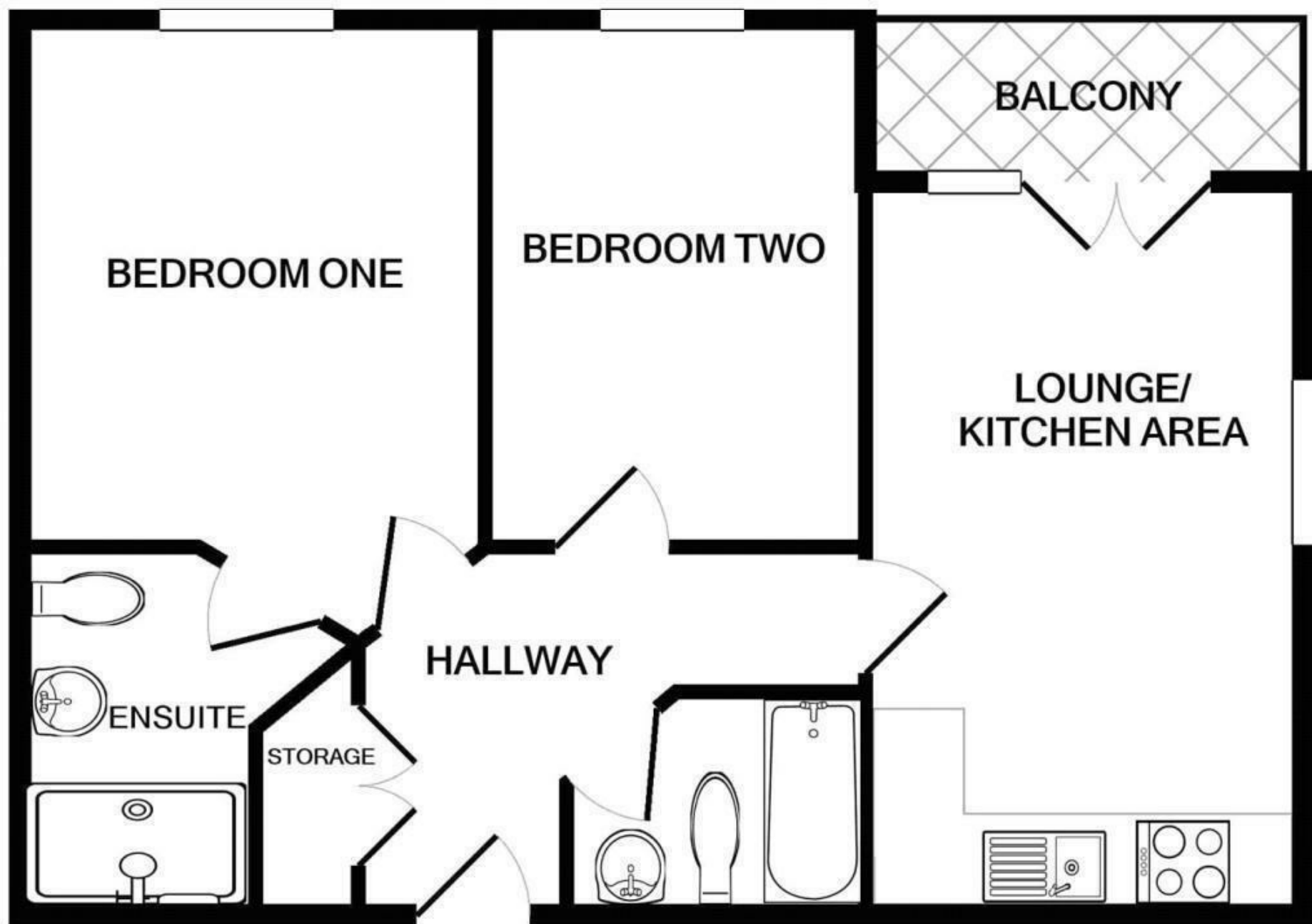
- 2 spacious bedrooms
- Modern interior design
- Lovely balcony view
- Large car port included
- Purpose built flat
- Located in Patchway, Bristol



Bristol  
156 Henleaze Road, Henleaze  
Bristol, BS9 4NB  
0117 213 0777  
[www.goodmanlilley.co.uk](http://www.goodmanlilley.co.uk)







These particulars are for general guidance only. They do not form or constitute any part of an offer or contract. Goodman & Lilley has not carried out structural surveys of the property. The services, appliances or specific fittings mentioned in these details have not been tested. Every attempt is made to ensure accuracy, however all photographs, measurements, floor plans and distances are for illustrative purposes only. They must not be relied upon when purchasing carpets and or other fixtures and fittings. Lease details, service charges and ground rents are given as a guide only. They should be checked and confirmed by a licensed solicitor prior to exchange of contracts. The copyright of all details, photographs and floor plans remain exclusive to Goodman & Lilley.