



ROSELANDS ABBOTS LEIGH ROAD,
BRISTOL, BS8 3QD

GOODMAN
& LILLEY







ROSELANDS ABBOTS LEIGH ROAD

BRISTOL BS8 3QD

GUIDE PRICE
£2,000,000

Completed in 2025, this new build residence combines thoughtful design, bundles of storage space and eco credentials, and benefits from a 10 year structural warranty guarantee. Featuring an air source heat pump, MVHR system, underfloor heating throughout the ground floor, high thermal efficiency triple glazing, HikVision CCTV and CAT 6 cabling. Specification highlights include aluminium windows and doors, porcelain tiling and high specification appliances.

Situation

Roselands is a bespoke designed five bedroom family home of significant proportions with a generously sized plot set in a semi-rural area close to the amenities of the popular Clifton Village. The property boasts a superb location for those who enjoy recreation with Leigh Woods nature reserve, Clifton College sports facilities and Abbots Leigh cricket club on the doorstep, and both Ashton Court – with its mountain bike trails, deer park and public golf course, and Bristol and Clifton golf club just around the corner. The cafes and shops of Clifton village are just across the famous Clifton Suspension bridge and a good gastro pub in Abbots Leigh village are both within walking distance too.

Shopping facilities can be found at nearby Clifton, approximately 2 miles away by crossing the famous Clifton Suspension Bridge.

National rail links are found in the city centre (3.5 miles) with a direct service to London Paddington. Junction 19 of the M5 only around 2.6 miles away gives access to the motorway network.

Description

Completed in 2025, Roselands is one of just two bespoke contemporary homes, thoughtfully designed and built by a local developer. With a focus on quality and sustainability, the house includes advanced features such as Cat 6 cabling throughout, triple glazed windows, air source heating, and underfloor heating on the ground floor—designed with the modern family and future efficiency in mind.

The layout is spacious and practical, with a welcoming entrance hall and feature galleried landing. The ground floor includes a cloakroom and plant room, and the heart of the home is the stunning 33ft x 21ft open-plan kitchen, dining, and family space. This area is flooded with natural light thanks to full-height sliding doors on both aspects, and it's fitted with a central island, quartz surfaces, and top-end NEFF appliances. A very large utility room, pantry, and boot room provide excellent storage and functionality. A versatile playroom or cinema space, a separate lounge with garden access, and a dedicated study complete the ground floor.

Upstairs, the principal bedroom includes a

stylish en-suite with both bath and shower, a walk-in dressing area, and additional storage space. Two further double bedrooms enjoy private en-suite shower rooms, while a fourth double bedroom shares a Jack & Jill style bathroom with a fifth, adaptable room—ideal as a guest room or second study. Each of the four main bedrooms benefits from full-height access to deep eaves storage, with generous headroom suitable for creative use as study nooks, dens, or hobby spaces.

Gardens & Grounds

Set circa. 1.5 acres, Roselands is enveloped by mature trees providing tranquillity and privacy. A private driveway leads through electric gates to a block-paved forecourt with parking for multiple vehicles. The rear garden is terraced across three levels and predominantly laid to lawn, benefitting from a sunny southerly orientation. A generous patio area opens directly from the main living spaces, perfect for alfresco dining and entertaining. Subject to planning, there's scope to add a car port, detached garage, or ancillary outbuildings if desired.

Services & Additional Information:

Mains water and electricity
Private drainage via modern sewage treatment plant
Air source heating with underfloor heating to the ground floor
Triple glazed windows
EV charging point
10-year building warranty

Local Authority: North Somerset Council
Council Tax: Band G

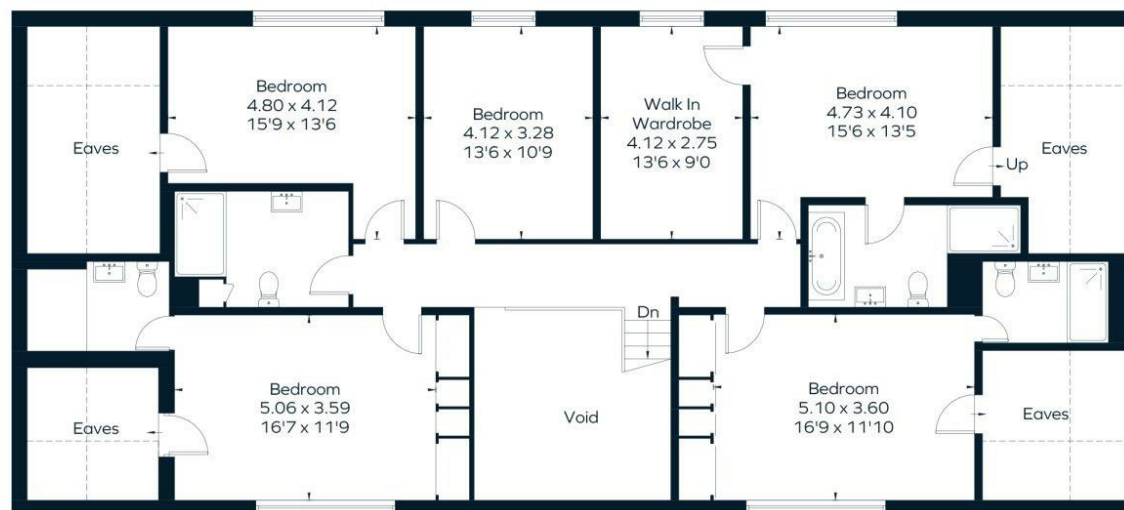


- Triple Glazing
- Detached new build house
- Prestigious Abbots Leigh location
- Viewing recommended
- Heat Recovery System
- Over 4,060 sq ft
- Near Clifton Village
- Large open plan spaces
- 1.5-acre generous plot
- Contemporary design

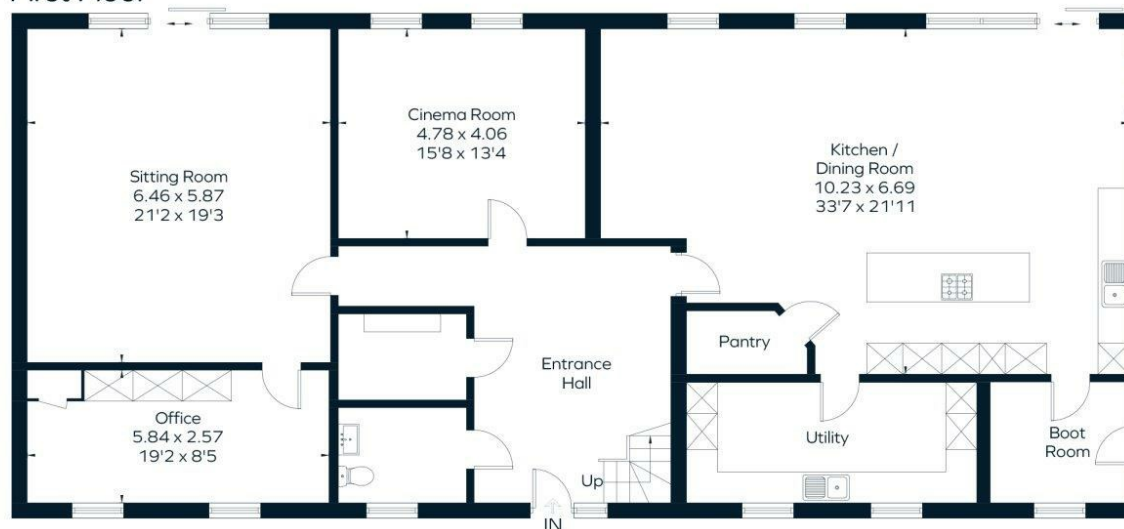




Approximate Floor Area = 377.2 sq m / 4060 sq ft (Including Eaves / Excluding Void)



First Floor



Ground Floor



This floor plan has been drawn in accordance with RICS Property Measurement 2nd edition.

All measurements, including the floor area, are approximate and for illustrative purposes only. @fourwalls-group.com #83452

HENLEAZE

156 Henleaze Road
Henleaze BS9 4NB
henleaze@goodmanlilley.co.uk

0117 213 0777

PORTISHEAD

36 High Street
Portishead BS20 6EN
sales@goodmanlilley.co.uk

01275 430 440

SHIREHAMPTON

9 High Street
Shirehampton BS11 0DT
shire@goodmanlilley.co.uk

0117 213 0333

LETTINGS

lettings@goodmanlilley.co.uk

01275 299 010

0117 213 0101

LAND & NEW HOMES

156 Henleaze Road
Henleaze BS9 4NB
LNH@goodmanlilley.co.uk

0117 213 0151



These particulars are for general guidance only. They do not form or constitute any part of an offer or contract. Goodman & Lilley has not carried out structural surveys of the property. The services, appliances or specific fittings mentioned in these details have not been tested. Every attempt is made to ensure accuracy, however all photographs, measurements, floor plans and distances are for illustrative purposes only. They must not be relied upon when purchasing carpets and or other fixtures & fittings. Lease details, service charges and ground rents are given as a guide only. They should be checked and confirmed by a licensed solicitor prior to exchange of contracts. The copyright of all details, photographs and floor plans remain exclusive to Goodman & Lilley.



rightmove

Zoopla