



Perretts Court Cumberland Road

, Bristol, BS1 6UF

£1,800 Per Month



IF YOU'RE INTERESTED IN APPLYING FOR THIS PROPERTY, PLEASE EMAIL AGENT THROUGH THE PORTAL AND WE WILL EMAIL YOU AN APPLICATION FORM

Welcome to 6 Perretts Court, Cumberland Road, Bristol, a delightful purpose-built apartment that offers a perfect blend of modern living and stunning natural beauty. This spacious two-bedroom residence is ideally situated just a stone's throw away from Whapping Wharf, providing you with breathtaking harbourside views that are sure to impress.

As you enter the apartment, you will be greeted by a light and airy living room, designed to create a welcoming atmosphere for both relaxation and entertaining. The well-appointed kitchen comes complete with essential white goods.

The property features two generously sized double bedrooms, ensuring ample space for rest and privacy. The modern bathroom is fitted with a stylish white suite and includes a bath, perfect for unwinding after a long day.



Living Room 15'3" x 13'2" (4.65m x 4.03m)

Kitchen 16'4" zx 7'4" (5.00m zx 2.26m)

Bedroom One 13'2" x 10'1" (4.02m x 3.09m)

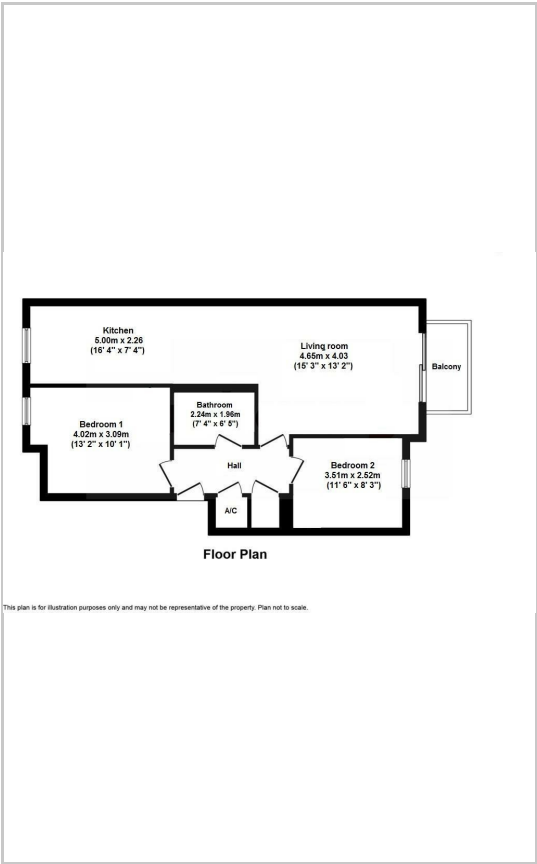
Bedroom Two 11'6" x 8'3" (3.51m x 2.52m)

Bathroom 7'4" x 6'5" (2.24m x 1.96m)

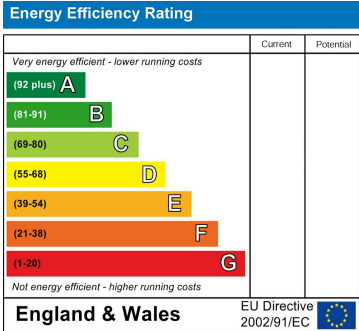
Area Map



Floor Plans



Energy Efficiency Graph



These particulars, whilst believed to be accurate are set out as a general outline only for guidance and do not constitute any part of an offer or contract. Intending purchasers should not rely on them as statements of representation of fact, but must satisfy themselves by inspection or otherwise as to their accuracy. No person in this firms employment has the authority to make or give any representation or warranty in respect of the property.