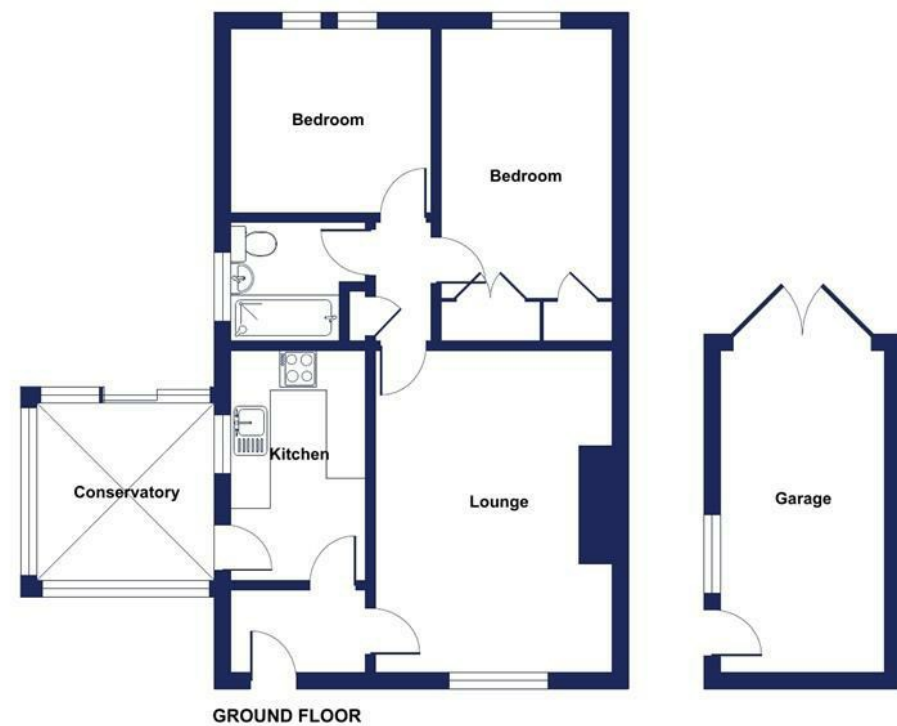


Energy Efficiency Rating		Current	Potential
Very energy efficient - lower running costs			
(92 plus) A			88
(81-91) B			
(69-80) C			
(55-68) D		70	
(39-54) E			
(21-38) F			
(1-20) G			
Not energy efficient - higher running costs			
England & Wales	EU Directive 2002/91/EC		

Firs Court, Keynsham, Bristol, BS31

Approximate Area = 720 sq ft / 66.9 sq m
 Garage = 136 sq ft / 12.6 sq m
 Total = 856 sq ft / 79.5 sq m
 For identification only - Not to scale



GROUND FLOOR

Floor plan produced in accordance with RICS Property Measurement 2nd Edition, Incorporating International Property Measurement Standards (IPMS2 Residential). © nichecom 2026. Produced for Davies & Way. REF: 1487337



DAVIES & WAY

CHARTERED SURVEYORS • ESTATE AGENTS

1 High Street, Keynsham, Bristol, BS31 1DP
 Tel: 0117 9863681 email: keynsham@daviesandway.com

1 Firs Court, Keynsham, Bristol, BS31 2RD



£280,000

A sympathetically extended two bedroom bookend bungalow that's located within a generous corner plot.

- Entrance hallway
- Lounge
- Kitchen
- Conservatory
- Two bedrooms
- Bathroom
- Gardens
- Garage
- No onward sales chain



www.daviesandway.com
 CONSUMER PROTECTION FROM UNFAIR TRADING REGULATIONS 2008
 These details are for guidance only and complete accuracy cannot be guaranteed. If there is any point which is of particular importance verification should be obtained. They do not constitute a contract or part of a contract. References to tenure of a property are based on information supplied by the seller. The agent has not had sight of the title documents. A buyer is advised to obtain verification from their conveyancer. All measurements are approximate and floor plans are for guidance only. No guarantee can be given with regard to planning permissions or fitness for purpose. No apparatus, equipment, fixture or fitting has been tested. Photographs may have been taken using a wide angled lens and items shown in photographs are NOT necessarily included. Interested parties are advised to check availability and make an appointment to view before travelling to see a property. The property is offered subject to being unsold.
 DATA PROTECTION ACT 1998: Please note that all personal information by customers wishing to receive information and/or services from Davies and Way will be processed by the agent and may be shared with third parties. If you do not wish your personal information to be used for any of these purposes, please notify us.

1 Firs Court, Keynsham, Bristol, BS31 2RD

Situated within a generous corner plot, this sympathetically extended bookend bungalow offers two bedrooms, as well as the addition of a delightful conservatory that enjoys garden views.

Internally all accommodation is arranged over a single floor and consists of an entrance hallway, a lounge measuring 5m ('16.4') in length, a double galley style kitchen which leads to a delightful conservatory. The home further benefits from a family bathroom.

Externally the home sits within a generous corner plot and to the front offers a low maintenance garden mainly laid to stone chippings and flower beds, while the rear enjoys a large side garden which is ripe for extension into (subject to obtaining the necessary consents) and offers a lawn and a level patio. The property further benefits from a single garage that's located in the rear of the garden and no onward sales chain

INTERIOR

GROUND FLOOR

ENTRANCE HALLWAY 1.2m x 2.1m (3'11" x 6'10")

Radiator, doors leading to rooms.

LOUNGE 5m x 3.6m (16'4" x 11'9")

Double glazed window to front aspect, radiator, power points. Door leading to internal hallway.

KITCHEN 3.6m x 2.1m (11'9" x 6'10")

Double glazed window to side aspect to conservatory. Kitchen comprising range of matching wall and base units with roll top work surfaces, wash hand basin with mixer tap over, integrated electric oven with four ring hob over, space and plumbing for washing machine, space and power for upright fridge/freezer, wall mounted gas combination boiler, radiator, power points, door leading to conservatory.

CONSERVATORY 3.2m x 3m (10'5" x 9'10")

Triple aspect double glazed windows to front, rear and side aspects, double glazed sliding doors to rear aspect providing access to rear garden, fully glazed roof, radiator, power points.

INTERNAL HALLWAY 2.8m x 1.6m narrowing to 0.8m (9'2" x 5'2" narrowing to 2'7")

Built in storage cupboard, doors leading to rooms.

BEDROOM ONE 4.2m x 2.7m (13'9" x 8'10")

Double glazed window to rear aspect overlooking rear garden, built in wardrobes, radiator, power points.

BEDROOM TWO 3.2m x 3m (10'5" x 9'10")

Dual UPVC double glazed windows to rear aspect overlooking rear garden, radiators, power points.

BATHROOM 2m x 1.7m (6'6" x 5'6")

Obscured double glazed window to side aspect, access to loft via hatch, matching three piece suite comprising pedestal wash hand basin, low level WC, panelled bath with shower off mains supply over, radiator, tiled splashbacks to all wet areas.

EXTERIOR

FRONT OF PROPERTY

Low maintenance front garden mainly laid to stone chippings with well stocked flower beds, path and steps leading to front door.

REAR GARDEN

Mainly laid to lawn with fenced boundaries, well stocked flower beds, patio ideal for al fresco dining, gate leading to front garden, pedestrian access to garage.

GARAGE

Single garage located at rear of the garden, accessed via wooden door with pedestrian door leading to rear garden.

TENURE

This property is freehold

COUNCIL TAX

Prospective purchasers are to be aware that this property is in council tax band B according to www.gov.uk website. Please note that change of ownership is a 'relevant transaction' that can lead to the review of the existing council tax banding assessment.

ADDITIONAL INFORMATION

Local authority: Bath and North East Somerset.

Services: All services connected.

Mobile phone signal: outside EE, O2, Three and Vodafone - all likely available (Source - Ofcom).

