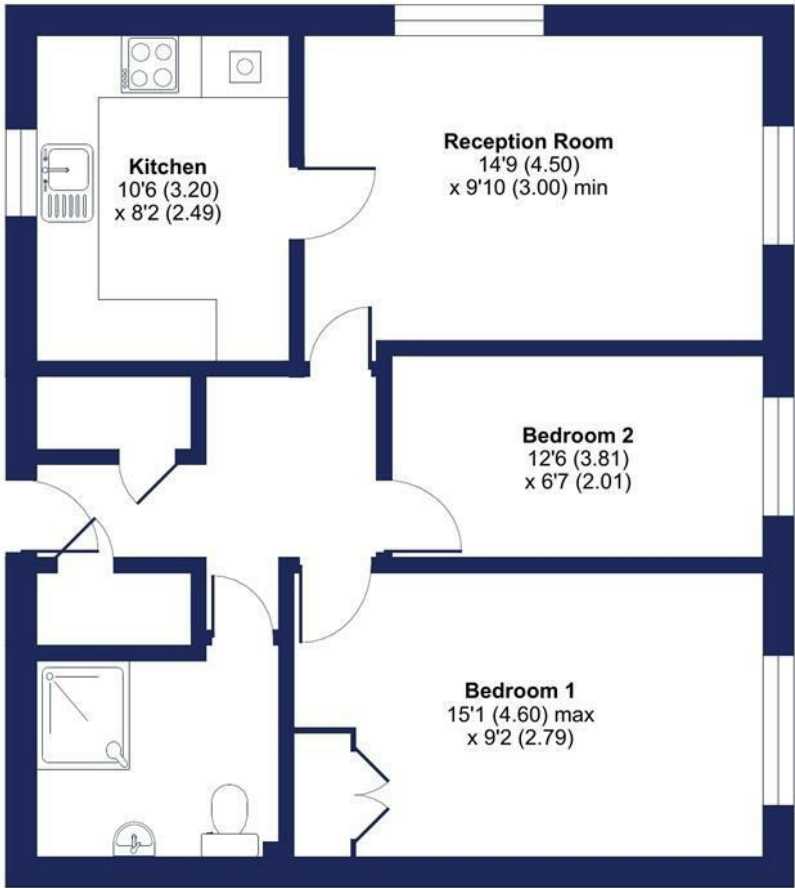


Energy Efficiency Rating		
	Current	Potential
Very energy efficient - lower running costs		
(92 plus) A		
(81-91) B		
(69-80) C		
(55-68) D		
(39-54) E	51	
(21-38) F		
(1-20) G		
Not energy efficient - higher running costs		
England & Wales	EU Directive 2002/91/EC	

Fairacres Close, Keynsham, Bristol, BS31

Approximate Area = 622 sq ft / 57.8 sq m

For identification only - Not to scale



GROUND FLOOR

Floor plan produced in accordance with RICS Property Measurement 2nd Edition, incorporating International Property Measurement Standards (IPMS2 Residential). © nichecom 2025. Produced for Davies & Way. REF: 1271993



www.daviesandway.com
CONSUMER PROTECTION FROM UNFAIR TRADING REGULATIONS 2008
These details are for guidance only and complete accuracy cannot be guaranteed. If there is any point which is of particular importance verification should be obtained. They do not constitute a contract or part of a contract. References to tenure of a property are based on information supplied by the seller. The agent has not had sight of the title documents. A buyer is advised to obtain verification from their conveyancer. All measurements are approximate and floor plans are for guidance only. No guarantee can be given with regard to planning permissions or fitness for purpose. No apparatus, equipment, fixture or fitting has been tested. Photographs may have been taken using a wide angled lens and items shown in photographs are NOT necessarily included. Interested parties are advised to check availability and make an appointment to view before travelling to see a property. The property is offered subject to being unsold.
DATA PROTECTION ACT 1998: Please note that all personal information by customers wishing to receive information and/or services from Davies and Way will be processed by the agent and may be shared with third parties. If you do not wish your personal information to be used for any of these purposes, please notify us.

DAVIES & WAY

CHARTERED SURVEYORS • ESTATE AGENTS

1 High Street, Keynsham, Bristol, BS31 1DP
Tel: 0117 9863681 email: keynsham@daviesandway.com

10 Fairacres Close, Keynsham, Bristol, BS31 1TT



£150,000

A well presented and cared for two bedroom ground floor retirement apartment.

- Retirement property
- Ground Floor
- Lounge
- Kitchen
- Two bedrooms
- Wet room
- Residents facilities



10 Fairacres Close, Keynsham, Bristol, BS31 1TT

A well presented two bedroom property located within a sought after retirement complex, flat 10 is located at the top of Fairacres Close and is accessed without the need of steps. Once inside the accommodation is raised up from the ground floor which provides additional security and peace of mind. Internally the accommodation offers a roomy entrance hallway with two large built in storage cupboards, a good size lounge with dual aspect windows and a well cared for kitchen. The flat further offers two well balanced bedrooms, in addition to a three piece wet room.

Fairacres Close offers a range of residents facilities including well tended communal gardens with a separate clothes drying area, a bookable meeting room and house Manager (not 24 hours).

COMMUNAL ENTRANCE

Accessed by a secure telephone entry system and leading directly to Flat 10.

INTERNAL HALLWAY 3.4m x 1.9m (11'1" x 6'2")

to maximum points. Two large built in storage cupboards, electric radiator, doors to rooms.

LOUNGE 4.5m x 3m (14'9" x 9'10")

Dual aspect double glazed windows to rear and side aspects, electric radiators, power points, door leading to kitchen.

KITCHEN 3.2m x 2.4m (10'5" x 7'10")

Double glazed window to front aspect. Kitchen comprising range of matching wall and base units with roll top work surfaces, bowl and a quarter stainless sink with mixer tap over, space and power for electric oven with glass and stainless steel extractor fan over, space and plumbing for washing machine, space and power for upright fridge freezer, power points, tiled splashbacks to all wet areas.

BEDROOM ONE 4.5m x 2.7m (14'9" x 8'10")

Double glazed window to rear aspect, electric radiator, built in double wardrobe, power points.

BEDROOM TWO 3.5m x 2.1m (11'5" x 6'10")

Double glazed window to rear aspect, electric radiator, power points.

WET ROOM 2.4m x 1.9m (7'10" x 6'2")

Wet room comprising walk in shower with electric shower over, pedestal wash hand basin with mixer tap over, low level WC, heated towel rail, extractor fan, tiled splashbacks to all wet areas.

RESIDENTS FACILITIES

Residents have exclusive use of pretty communal gardens including closed drying area and a meeting room. There is the additional benefit of a House Manager (not 24 hours).

TENURE

This property is leasehold. The lease is for 125 years from 1st January 1985. The service charges payable are £3,577.47 per annum.

COUNCIL TAX

Prospective purchasers are to be aware that this property is in council tax band B according to www.gov.uk website. Please note that change of ownership is a 'relevant transaction' that can lead to the review of the existing council tax banding assessment.

ADDITIONAL INFORMATION

Local authority: Bath and North East Somerset.

Services: All services connected.

Broadband speed: Superfast 80mbps (Source - Ofcom).

Mobile phone signal: outside EE, O2, Three and Vodafone - all likely available (Source - Ofcom).

