
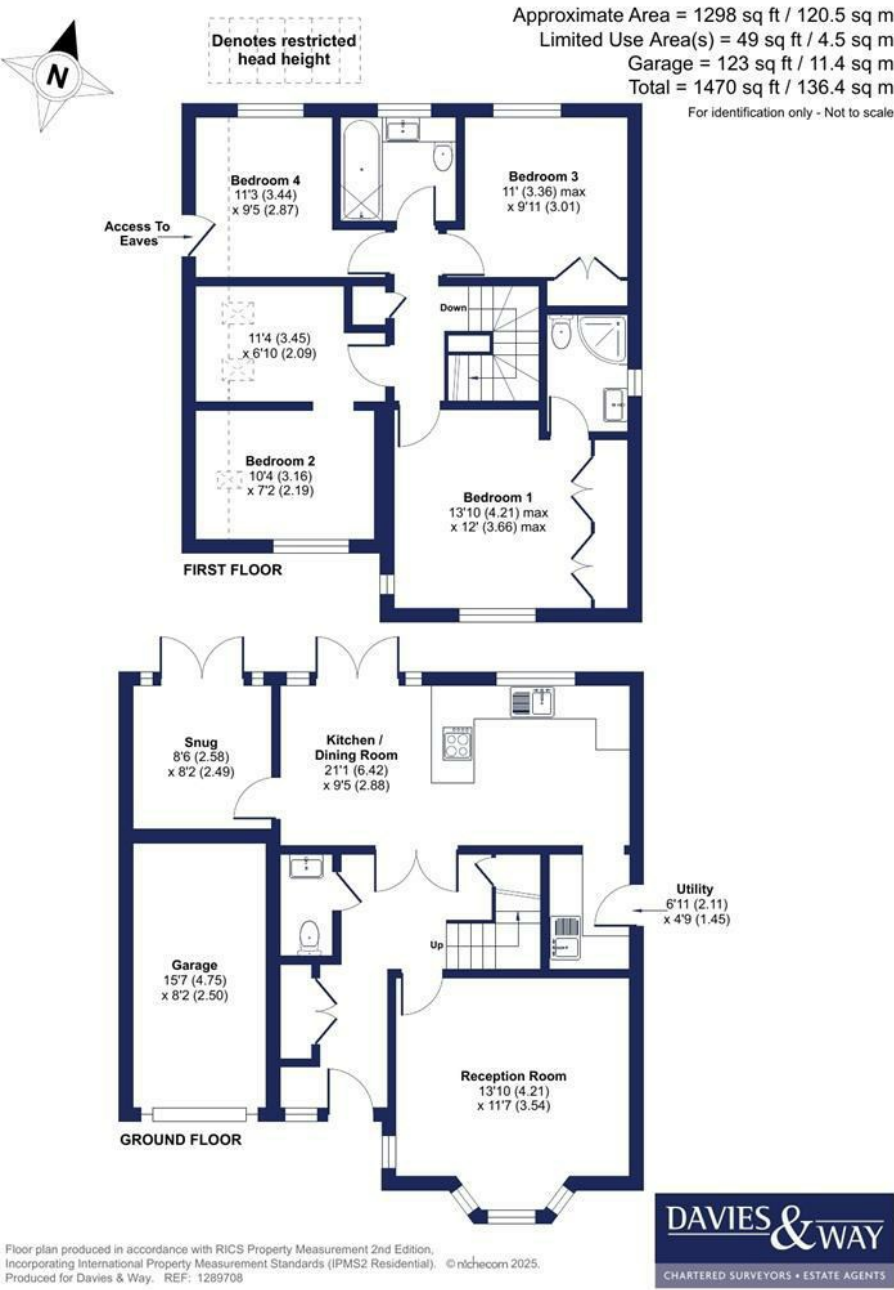


Energy Efficiency Rating		
	Current	Potential
Very energy efficient - lower running costs		
(92 plus) A		81
(81-91) B		
(69-80) C		
(55-68) D	69	
(39-54) E		
(21-38) F		
(1-20) G		
Not energy efficient - higher running costs		
England & Wales		EU Directive 2002/91/EC
		

Brunel Close, Warmley, Bristol, BS30



DAVIES & WAY

CHARTERED SURVEYORS • ESTATE AGENTS

1 High Street, Keynsham, Bristol, BS31 1DP
Tel: 0117 9863681 email: keynsham@daviesandway.com

11 Brunel Close, Warmley, Bristol, BS30 5BB



£650,000

An immaculately presented four double bedroom detached home located in a tucked away position on a sought after cul de sac.

- Detached
- Two reception rooms
- Kitchen/Diner
- Utility room
- Four bedrooms
- En suite
- Bathroom
- Garage
- Driveway
- Rear garden

www.daviesandway.com
CONSUMER PROTECTION FROM UNFAIR TRADING REGULATIONS 2008
These details are for guidance only and complete accuracy cannot be guaranteed. If there is any point which is of particular importance verification should be obtained. They do not constitute a contract or part of a contract. References to tenure of a property are based on information supplied by the seller. The agent has not had sight of the title documents. A buyer is advised to obtain verification from their conveyancer. All measurements are approximate and floor plans are for guidance only. No guarantee can be given with regard to planning permissions or fitness for purpose. No apparatus, equipment, fixture or fitting has been tested. Photographs may have been taken using a wide angled lens and items shown in photographs are NOT necessarily included. Interested parties are advised to check availability and make an appointment to view before travelling to see a property. The property is offered subject to being unsold.
DATA PROTECTION ACT 1998: Please note that all personal information by customers wishing to receive information and/or services from Davies and Way will be processed by the agent and may be shared with third parties. If you do not wish your personal information to be used for any of these purposes, please notify us.



11 Brunel Close, Warmley, Bristol, BS30 5BB

Nestled in a sought-after cul-de-sac within the popular Bridgegate area, this immaculately presented four double bedroom detached home has been sympathetically extended to offers spacious, high quality accommodation finished to an exceptional standard throughout.

The ground floor opens with a generous entrance hallway leading to a formal living room enhanced by a charming bay window, a versatile snug ideal for use as a study or additional lounge, and a sleek, modern kitchen/diner complete with French doors that open out to the rear garden. A practical utility room and WC complete the ground floor layout. To the first floor, you'll find four well-proportioned double bedrooms. The primary suite features fitted wardrobes and an en-suite shower room, while the remaining bedrooms are served by a contemporary family bathroom.

Outside, the rear garden is predominantly laid to lawn framed by a combination of wall and composite fencing for privacy, with a patio area perfect for alfresco dining. The front of the property includes off-street parking, a neatly maintained garden, and established evergreen hedging. Further benefits of the property include a single garage.

INTERIOR

GROUND FLOOR

ENTRANCE HALLWAY

Double glazed window to front aspect, doors leading to ground floor rooms and staircase to first floor with storage cupboard below. Storage cupboard with hanging rails for coats, tiled flooring, spotlight lighting, radiators and power points.

RECEPTION ROOM 4.2m x 3.5m (13'9" x 11'5")

Double glazed bay window to front aspect, radiator and power points.

SNUG 2.5m x 2.4m (8'2" x 7'10")

Double glazed windows and French doors to rear garden, radiator and power points.

KITCHEN/DINER 6.4m x 2.8m (20'11" x 9'2")

Double glazed window and French doors to rear garden, door to snug and an archway to utility. High gloss wall and base units with integrated dishwasher, Neff double oven and induction hob. Space for fridge freezer and slimline wine cooler, one and a quarter sink with mixer tap over, tiled flooring with underfloor heating and power points.

UTILITY ROOM 2m x 1.4m (6'6" x 4'7")

Door to side aspect, high gloss wall and base units with work surfaces over and space for washing machine and tumble dryer. Sink and drainer with mixer tap over, tiled flooring and power points.

CLOAKROOM 1.9m x 0.8m (6'2" x 2'7")

Wash hand basin with storage cupboard cupboard below and a mixer tap over with tiled splashback to area. Low level WC, tiled flooring, spotlight lighting and a heated towel rail.

FIRST FLOOR

LANDING

Doors leading to first floor rooms, airing cupboard and access to loft via a hatch. Spotlight lighting and power points.

BEDROOM ONE 3.6m x 3.6m (11'9" x 11'9")

Double glazed windows to both front and side aspects, door leading to en suite, fitted wardrobes, radiator and power points.

EN SUITE 2.1m x 1.4m (6'10" x 4'7")

Double glazed obscured window to side aspect, walk in corner shower off mains, vanity unit with counter top basin and mixer tap over and a low level WC. Tiled walls to wet areas, spotlight lighting, heated towel rail and shaving power points.

BEDROOM TWO 4.6m x 3.4m (15'1" x 11'1")

Double glazed window to front aspect and velux to side. Wall with walkway creating two sections to bedroom, spotlight lighting, radiators and power points.

BEDROOM THREE 3m x 2.9m (9'10" x 9'6")

Double glazed window to rear aspect, fitted wardrobe, spotlight lighting, radiator and power points.

BEDROOM FOUR 2.8m x 2.5m (9'2" x 8'2")

Double glazed window rear aspect, storage in eaves, radiator and power points.

BATHROOM 2m x 1.8m (6'6" x 5'10")

Double glazed obscured window to rear aspect, bath with mixer tap and shower off mains with rainfall attachment over. Vanity unit with storage cupboards, wash hand basin with mixer tap over and low level WC with hidden cistern. Tiled flooring and splashbacks to wet areas. Touch light up mirror, spotlight lighting, and a heated towel rail.

EXTERIOR

FRONT OF PROPERTY

Shared driveway leading to number 11 and 12 Brunel Close. Spaces for parking with access to garage and a lawn area with well established evergreen shrubbery.

REAR GARDEN

Mainly laid to lawn with a patio area for outdoor dining. Mix of composite fences and brick walls to boundaries with side access to front of property. Composite storage shed on laid to gravel.

GARAGE 4.7m x 2.5m (15'5" x 8'2")

Up and over garage door to front, lighting and power points.

TENURE

This property is freehold.

COUNCIL TAX

Prospective purchasers are to be aware that this property is in council tax band E according to www.gov.uk website. Please note that change of ownership is a 'relevant transaction' that can lead to the review of the existing council tax banding assessment.

ADDITIONAL INFORMATION

Local authority: South Gloucestershire

Services: All services connected.

Broadband speed: Superfast 38mbps (Source - Ofcom).

Mobile phone signal: outside EE, O2, Three and Vodafone - all likely available (Source - Ofcom)

