

3
BED

Modern Family Home, Central Location

10, Robin Lane, Peacehaven, BN10 8GJ

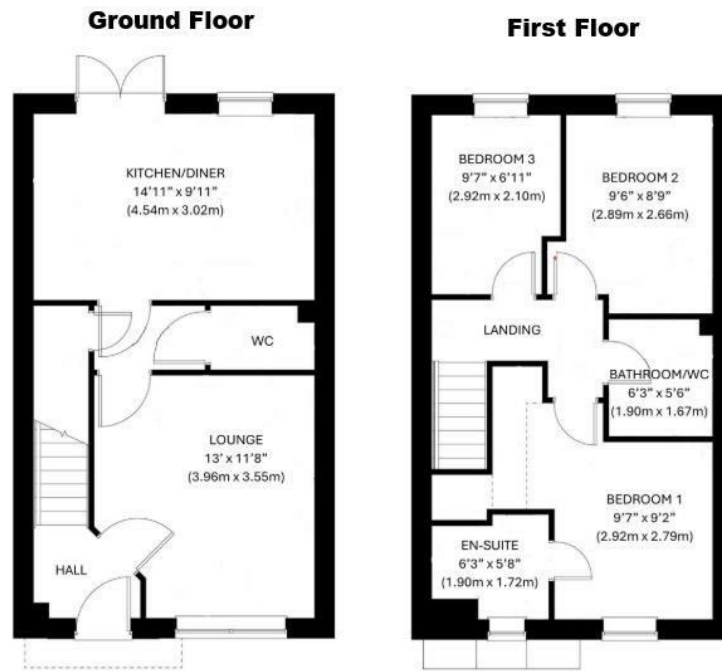


Guide Price £360,000

Freehold

phillipmann
we do more

www.phillipmann.com



inbrief...

Guide Price £360,000-£365,000

No Chain - A beautifully presented modern family home, built approximately four years ago and situated in the popular coastal town of Peacehaven. Ideally located close to local amenities, the property offers stylish, low-maintenance living and benefits from the remainder of the NHBC warranty for added peace of mind.

Conveniently positioned within walking distance of local primary and secondary schools, a convenience store, regular bus services to Brighton, and the recently created Centenary Park, this home is perfectly suited to families and commuters alike.

The accommodation comprises a bright and spacious south-facing living room, flooded with natural light and providing a welcoming space to relax. To the rear, the contemporary kitchen/dining room features a range of modern units and ample space for family dining and entertaining. A convenient ground-floor cloakroom/WC completes the layout.

Upstairs, there are three well-proportioned bedrooms, all benefiting from built-in wardrobes. The principal bedroom enjoys the added luxury of an en-suite shower room, while the remaining bedrooms are served by a stylish family bathroom.

Outside, the sunny rear garden enjoys an open aspect and provides an excellent space for outdoor dining and relaxation. The property also benefits from two allocated parking spaces.

Combining modern design, practical living space, and an excellent location, this attractive home presents an outstanding opportunity for families, first-time buyers, and those seeking a contemporary lifestyle by the coast.

* Approximately £12 per month Service Charge



EPC Rating - B
Council Tax Band - C

moreinfo...



Phillip Mann Peacehaven Office
226-230 South Coast Road, Peacehaven, BN10 8JR
01273 586622

To see more details on this & all our homes go to www.phillipmann.com