

2
BED

Beautifully Presented Home in Quiet Location

30, Tollgate, Peacehaven, BN10 8ED

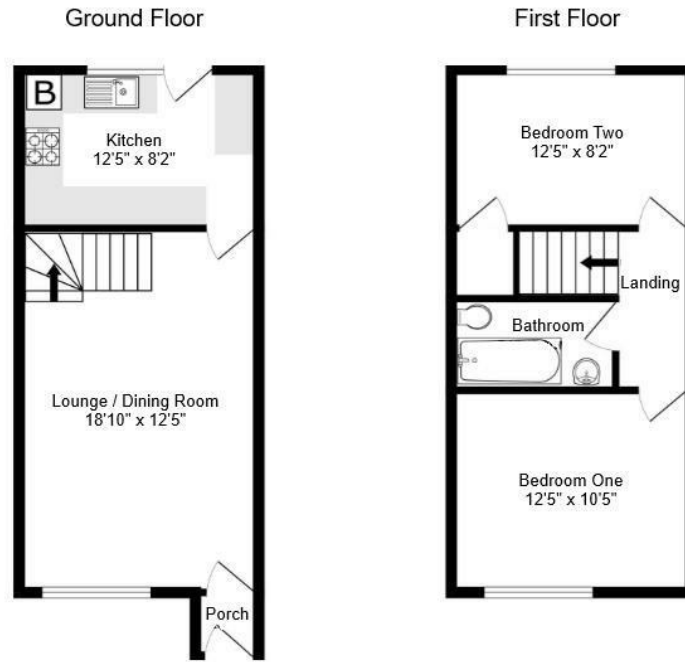


Price £299,950

Freehold

phillipmann
we do more

www.phillipmann.com



inbrief...

Whether you're a first-time buyer looking to take your first step onto the property ladder or an investor seeking an excellent addition to your portfolio, this beautifully maintained two-bedroom home is an outstanding opportunity. Tucked away in a quiet cul-de-sac close to the heart of Peacehaven, the property is ideally located within easy walking distance of Chatsworth Park, local shops, a doctor's surgery, regular bus services to Brighton, and picturesque countryside walks.

Approached via a well-kept front garden, a central pathway leads to the entrance porch, providing practical storage for coats and shoes. From here, you enter the spacious, south-facing lounge/dining room, a bright and welcoming living space with ample room for comfortable seating and a dining table. A large front-facing window fills the room with natural light, creating a warm and inviting atmosphere. The adjoining kitchen is fitted with a comprehensive range of matching wall and base units, contrasting worktops, and space for essential appliances, including a washing machine and fridge freezer. A rear door and window provide access to and overlook the attractive rear garden.

Upstairs, the first floor offers two generous double bedrooms, a loft hatch, and a stylish, recently refitted bathroom featuring a bath with overhead shower, wash basin, and WC. The rear bedroom also benefits from a spacious airing cupboard, providing valuable additional storage.

Outside, the low-maintenance rear garden enjoys a private, enclosed setting with tiered patio areas and established shrub borders, creating an ideal space for relaxing or entertaining. Completing the property is an allocated parking space to the rear, conveniently accessed via a gate from the garden.



Council Tax Band - C
EPC Rating - C

moreinfo...



Phillip Mann Peacehaven Office
226-230 South Coast Road, Peacehaven, BN10 8JR
01273 586622

To see more details on this & all our homes go to
www.phillipmann.com