

2  
BED

Central Location with No Chain  
27, Lincoln Avenue, Peacehaven, BN10 7JR



Price £309,950

Freehold

**phillipmann**  
we do more

[www.phillipmann.com](http://www.phillipmann.com)



27 Lincoln Avenue, BN10 7JR

Approximate Gross Internal Area = 80.41 sq m / 866 sq ft

Garage Area = 13.31 sq m / 143 sq ft

Total Area = 93.73 sq m / 1009 sq ft

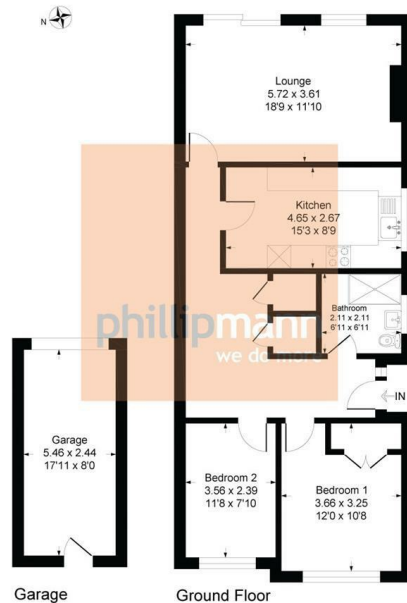


Illustration for identification purposes only, measurements are approximate, not to scale

## inbrief...

We are delighted to offer for sale this 2 bedroom semi detached bungalow situated in a popular, central residential area of Peacehaven within a short walk to local shops, primary / secondary schools and main bus routes to Brighton/Eastbourne.

As you approach the property, benefits include front garden and garage with off road parking nearby. The large L-shaped entrance hall features; useful cloaks cupboard, airing cupboard housing combination boiler with ample storage and hatch to party boarded loft space.

Bedroom one is a good size double room with space for all free standing furniture and inset wardrobe. Bedroom two is also a double room - both overlook the front garden. The walk in wet room is fitted with; w/c, wall mounted basin, tiled walls and frosted window to side.

The kitchen is fitted with a range of wall and base cupboards with complementing working surface. Features include; space for all white goods, oven with 4-way gas hob and overhead extractor, inset sink drainer with window to side, tiled splash back and space for a breakfast table. The living dining room comprises; space for all soft furnishings, electric fire with ornamental surround and sliding door to providing access to rear garden.

Externally, the sunny rear garden has been landscaped and comprises; a large useful patio area, lawn covering with stocked borders, a high degree of seclusion, rear door to garage and side access with outside tap.

NO CHAIN



Council Tax -

EPC Rating - C

moreinfo...



Phillip Mann Peacehaven Office

226-230 South Coast Road, Peacehaven, BN10 8JR

01273 586622

To see more details on this & all our homes go to

[www.phillipmann.com](http://www.phillipmann.com)