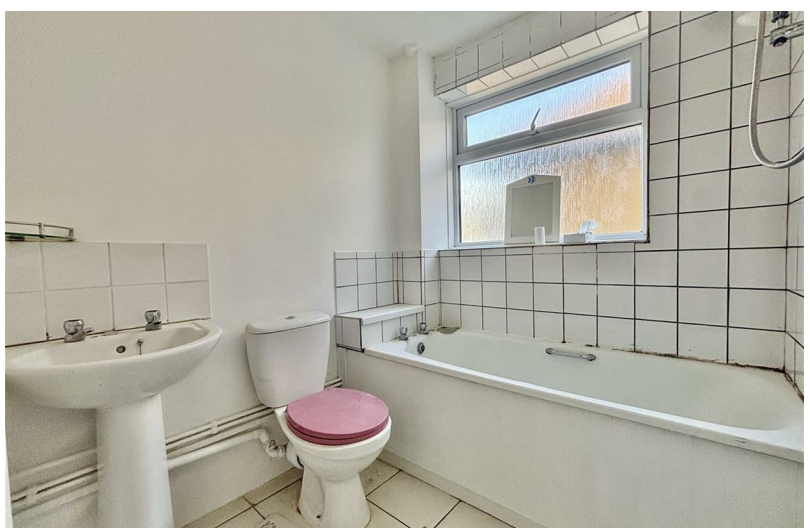


2  
BED

# No Chain - Spacious First Floor Apartment

10 Longridge Court, Longridge Avenue, Saltdean, BN2 8LY



Price £155,000

Leasehold

**phillipmann**  
we do more

[www.phillipmann.com](http://www.phillipmann.com)





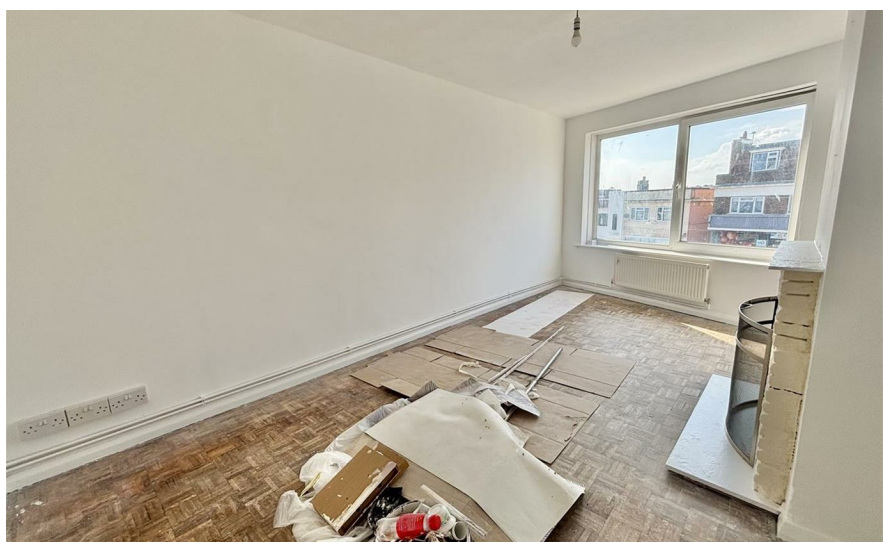
## inbrief...

Are you a first time buyer looking for your first purchase or a seasoned investor looking to add to your property portfolio? If either are you, then this particular apartment may be the one for you! Located in the heart of Saldean, you have every amenity right on your doorstep. From local, pubs, cafes, restaurants, shops, beach and bus routes to Brighton - what more can you ask for?

The apartment itself is located on the first floor and access is gained through the communal entrance hall to the front door. As you enter the property you are greeted by the entrance hall where all of the principle rooms are accessed. The west facing lounge/dining room lies to the front of the property and here you will find a feature fireplace and room for all of your normal furnishings. A window overlooks the front of the block and is the ideal watch all the comings and goings of a busy high street! The fitted kitchen lies adjacent and offers a range of cupboards, working surface alongside space for all of the normal appliances. Again a window takes in a view of the high street with a view down the road towards the sea.

Two bedrooms are on offer here with the master offering built in storage. These are serviced by the bathroom/WC which incorporates a bath with shower over, wc and basin.

The approximate room measurements comprise - Lounge 16'2 x 10'1, Kitchen 9'6 x 4'10, Bedroom One 11'8 x 9'11, Bedroom Two 12'5 x 6'11, Bathroom/WC 8'4 x 5'10



EPC Rating - C  
Council Tax Band - A

moreinfo...

Phillip Mann Peacehaven Office  
226-230 South Coast Road, Peacehaven, BN10 8JR  
01273 586622

To see more details on this & all our homes go to  
[www.phillipmann.com](http://www.phillipmann.com)

