

3  
BED

# Family House with No Chain

27, Collingwood Close, Peacehaven, BN10 8BA



Offers Over £279,950

Freehold

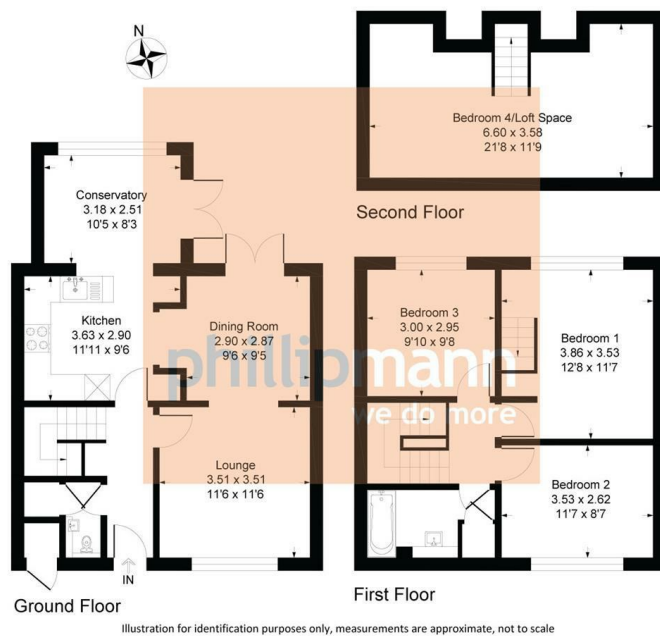
**phillipmann**  
we do more

[www.phillipmann.com](http://www.phillipmann.com)



27 Collingwood Close, BN10 8BA

Approximate Gross Internal Floor Area = 118.9 sq m / 1280 sq ft



inbrief...

NO CHAIN! Perfect investment opportunity for those looking to expand their portfolio or ideal first purchase for if you want your first step on the ladder.

We are pleased to present this generously sized and well positioned family home. Located in central Peacehaven you will find all of the towns amenities close by alongside schools for all ages and regular bus routes to central Brighton too.

The central front door opens into the entrance hall. From here you will find the downstairs wc, storage cupboards and stairs which rise to the first floor. Running front to back is the lounge/dining room which being dual aspect this room is a lovely bright space and more than big enough for your soft furnishings and a dining table and chairs too. Adjacent and open planned lies the fitted kitchen which offers a multitude of matching wall and base units combined with work surfaces and plenty of space for your associated appliances too. The conservatory at the rear of the property is a useful additional reception area with french doors to rear garden.

Moving upstairs you will note the spacious landing with access to loft space / room via stairs in bed 1. The bedrooms are all doubles in size and bedroom two overlooks the front whilst bedroom one and three lay to the rear of the property overlooking the rear garden. Completing the internal set up and servicing the upstairs bedrooms is the bathroom which comprises of a white suite including wc, wash basin which are complimented by tiled walls.

Outside space is equally generous. The rear garden is partially decked and just a few steps rise to a good lawn space which is perfect to enjoy the evening sunshine and for the whole family to enjoy.

Service Charge - £25 per month



EPC - D

Council Tax Band - B

moreinfo...



Phillip Mann Peacehaven Office

226-230 South Coast Road, Peacehaven, BN10 8JR

01273 586622

To see more details on this & all our homes go to [www.phillipmann.com](http://www.phillipmann.com)