

3
BED

Family Home, Garage, Central Location

26, Woodlands Close, Peacehaven, BN10 7SF



Price £335,000

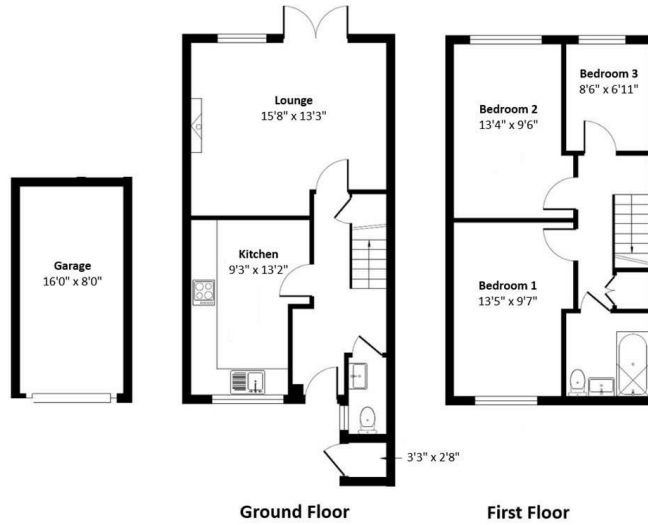
Freehold

phillipmann
we do more

www.phillipmann.com

Woodlands Close, Peacehaven, BN10

Approximate Area = 957 sq ft / 89 sq m (includes garage)
 Outbuilding = 8 sq ft / 1 sq m
 Total = 965 sq ft / 90 sq m



inbrief...

Welcome to this modern three-bedroom family home, offered for sale with no onward chain and ideally positioned in this convenient central location.

The property is within easy walking distance of local shops, bus routes into Brighton, primary/secondary school, and Chatsworth Park. Open countryside and scenic walking routes are also close at hand, offering the perfect balance of convenience and outdoor living.

Stepping inside, you're welcomed by an entrance hall which provides access to the principal ground floor accommodation. To the rear, the bright and spacious west-facing lounge/dining room is the heart of the home, offering ample space for both comfortable seating and family dining. A large window and patio doors fill the room with natural light and open directly onto the generous west-facing rear garden, creating an ideal space for entertaining or simply relaxing.

The kitchen/breakfast room is positioned at the front and is fitted with a range of storage units, contrasting worktops, and space for appliances, all complemented by a pleasant outlook over the front garden. A convenient ground floor cloakroom completes the accommodation.

Upstairs, there are three well-proportioned bedrooms. The principal bedroom enjoys a front aspect, while the remaining two bedrooms overlook the rear garden. The family bathroom is fitted with a white suite comprising a bath with shower over, wash hand basin and WC.

Outside, the front garden is mainly laid to lawn with a pathway leading to the entrance. To the rear, the enclosed west-facing garden provides an excellent space for children to play, outdoor entertaining or gardening, and benefits from rear access and a storage shed. A garage and off-road parking are located to the rear of the property, with additional unrestricted on-street parking also available nearby.

Combining practical family living with a highly convenient location, this home is an excellent opportunity for first-time buyers or growing families



EPC Rating - C
 Council Tax Band - C

moreinfo...

Phillip Mann Peacehaven Office
 226-230 South Coast Road, Peacehaven, BN10 8JR
 01273 586622



To see more details on this & all our homes go to www.phillipmann.com