

3
BED

Spacious Detached House

114, Cairo Avenue, Peacehaven, BN10 7LB



Price £425,000

Freehold

phillipmann
we do more

www.phillipmann.com

114 Cairo Avenue, BN10 7LB
Approximate Gross Internal Floor Area = 132.41 sq m / 1425 sq ft

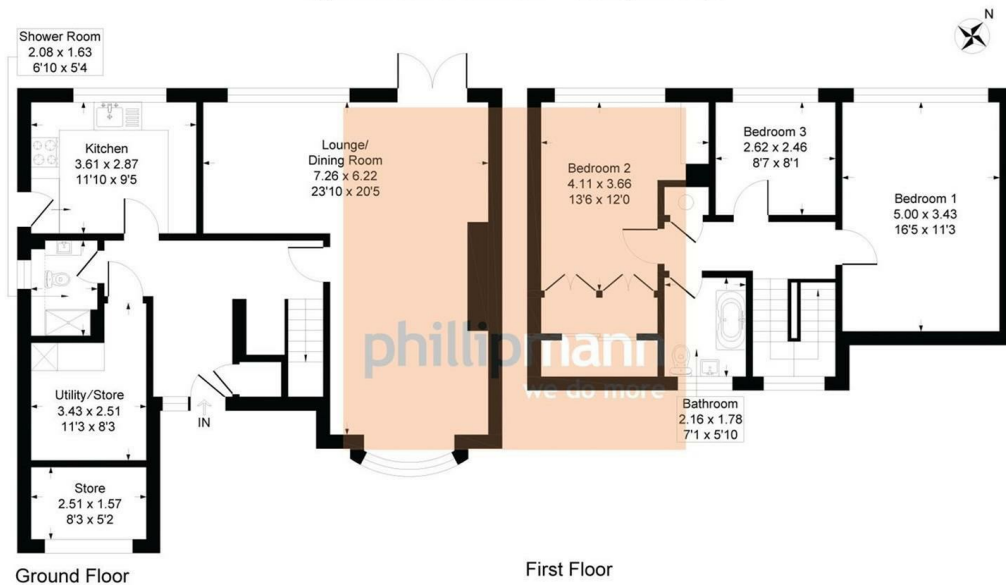


Illustration for identification purposes only, measurements are approximate, not to scale

inbrief...

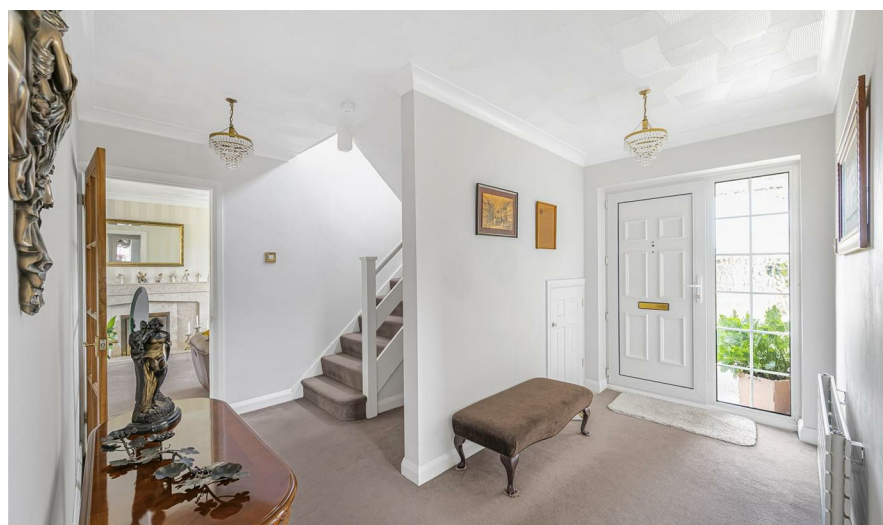
We are excited to offer to the market this spacious, three bedroom, detached residence located neatly at the end of a quiet cul-de-sac.

The property is presented to the market in immaculate condition, boasting a generous internal living accommodation of over 1,300 sq ft laid across two floors to comprise; Entrance hall, ground floor shower room, fully fitted kitchen/ breakfast room and exceptional L shaped living/ dining room with feature marble fireplace, bay window to front elevation and French doors leading out onto the rear garden. There is also access to a useful understairs cupboard and the integrated garage which has been partitioned to create a useful utility area and store to the front. Upstairs are two very well proportioned double bedrooms, a further good sized third bedroom and the recently refitted family bathroom.

This superb family home sits centrally within its' plot, set behind a half height brick wall, lawned front gardens and a driveway provides off street parking for two cars. The sunny west facing gardens are laid to lawn with a paved seating terrace directly to the rear, there are established borders to surround, a mature apple tree and ample space to the side for a garden store.

The property is located on Cairo Avenue, a popular and quiet no through road with superb access to Chatsworth Park, local schooling, shops and bus routes to nearby Brighton city centre and Eastbourne.

VIEWINGS ADVISED



Council Tax - D

EPC Rating - D

moreinfo...



Phillip Mann Peacehaven Office
226-230 South Coast Road, Peacehaven, BN10 8JR
01273 586622

To see more details on this & all our homes go to
www.phillipmann.com