

5
BED

Spacious and Versatile Family Home

24, Manor Drive, Peacehaven, BN10 7EB

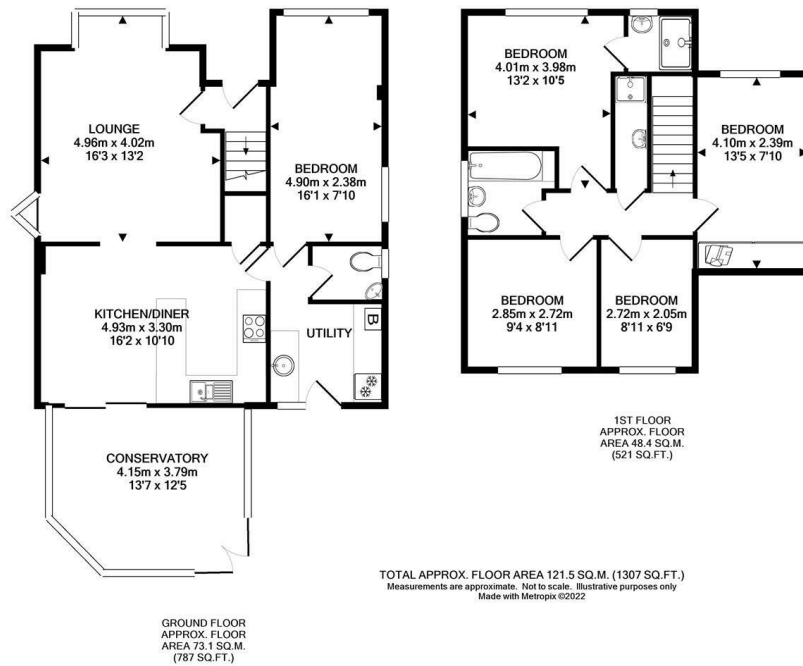


Offers Over £425,000

Freehold

phillipmann
we do more

www.phillipmann.com



inbrief...

Situated within a popular family-friendly close in Telscombe Cliffs, this beautifully presented and highly versatile family home offers generous accommodation. Conveniently located close to local shops, a primary school, Chatsworth Park, and regular bus services to Brighton, the property also benefits from easy access to open countryside and scenic walking routes.

To the front of the property, the spacious south-facing lounge is filled with natural light and features a bay window overlooking the front garden, creating an inviting space for relaxation. To the rear, the modern kitchen/dining room is fitted with a range of units, ample work surfaces, and integrated appliances. There is plenty of space for a large dining table, making it perfect for family meals and entertaining. Double doors lead through to the generous conservatory, which enjoys pleasant views over the rear garden.

A useful utility room, is close by providing further storage and direct access to the garden. From here, you can also access a versatile fifth bedroom, which could equally serve as a home office, playroom, or guest room. Completing the ground floor is a convenient cloakroom/WC.

On the first floor, there are four well-proportioned bedrooms, including the principal bedroom which benefits from its own en-suite shower room. A modern bathroom/wc comprises a bath, wash basin, and WC and a further shower room/wc serves the remaining bedrooms.

Outside, the attractive rear garden features a combination of patio and level lawn areas, complemented by mature planting and enclosed by timber fencing and walls, providing a safe and private environment for both children and pets. To the front, the property offers ample off-road parking for several vehicles, with a combination of paved driveway and open plan lawn.

This impressive home combines flexible living space, excellent outdoor areas, and a sought-after location, making it an ideal choice for modern family life.



EPC Rating - C
Council Tax Band - D

moreinfo...



Phillip Mann Peacehaven Office
226-230 South Coast Road, Peacehaven, BN10 8JR
01273 586622

To see more details on this & all our homes go to www.phillipmann.com