

2
BED

Allocated Parking
8 Sutton Parade, Alfriston Road, Seaford, BN25 3PX

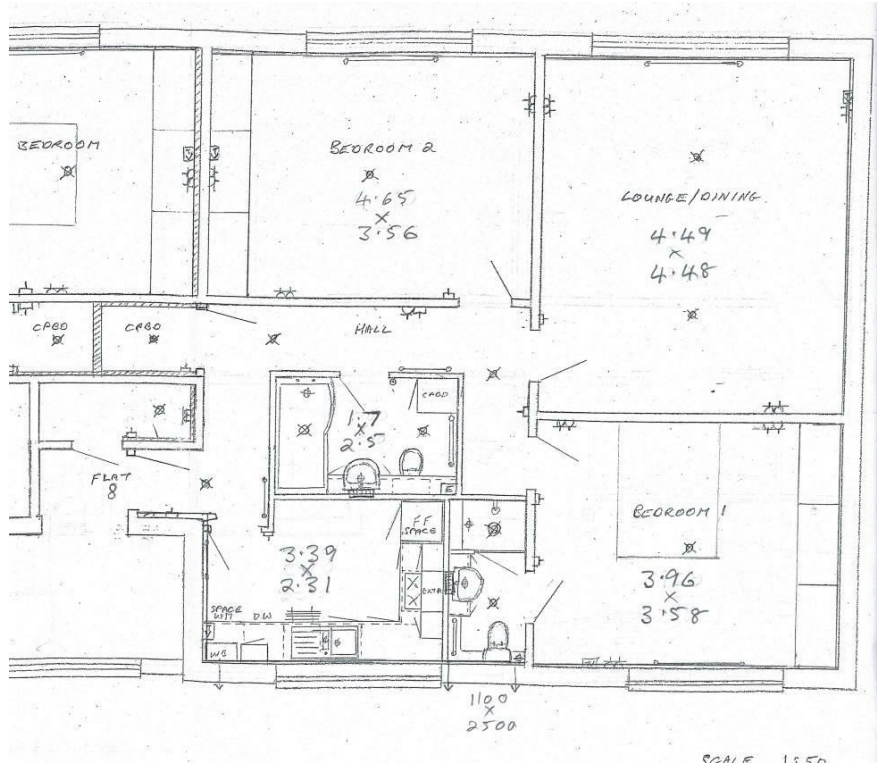


Price £250,000

Leasehold

phillipmann
we do more

www.phillipmann.com



inbrief...

This exceptionally well presented and spacious apartment is located on the second floor of this purpose built block, conveniently situated close to local shops and Tesco store, along with 'Wave' leisure centre and a regular bus service into Seaford town along with Brighton/Eastbourne.

The many benefits of the property include gas central heating with modern 'combi' boiler, double glazed windows, modern kitchen and bathrooms, allocated parking space and offered with vacant possession.

As you enter the flat there is a large storage cupboard and main door to the entrance hall which has the entry phone and further deep storage cupboard.

The main bathroom is located off the hall and comprises a P-shaped bath with shower over and glass screen, tiled surround, wash basin in vanity unit, WC and chrome heated towel rail.

The lounge/dining room has a full width window with open aspect which provides good natural light.

The main bedroom has a range of fitted wardrobes and large westerly aspect window with distant open aspect views towards the sea.

There is an en-suite shower room comprising shower cubicle, wash basin in vanity unit, WC and chrome heated towel rail. Bedroom two also has a good range of fitted wardrobes and dressing table and window with open aspect.

The well appointed kitchen has westerly aspect views towards the sea and is well fitted with a range of wall and base cupboards, complemented by working surface with inset sink, gas hob with extractor, double electric oven, appliance space for washing machine, dish washer, fridge and Wall mounted central heating boiler.

There is an ALLOCATED PARKING SPACE to the rear of the block along with bin store and residents store room.

OUTGOINGS :

Service Charge - £600.00 pa

Building Ins - £244.38 pa

Lease - 999 years from 1976



Energy Rating - C

Council Tax Band - B

moreinfo...



Phillip Mann Seaford Office
1-3 Dane Road, Seaford, East Sussex, BN25 1LG
01323 898666

To see more details on this & all our homes go to
www.phillipmann.com