

null  
BED

type your text here  
Land, Sutton Drive, Seaford, BN25 3ET



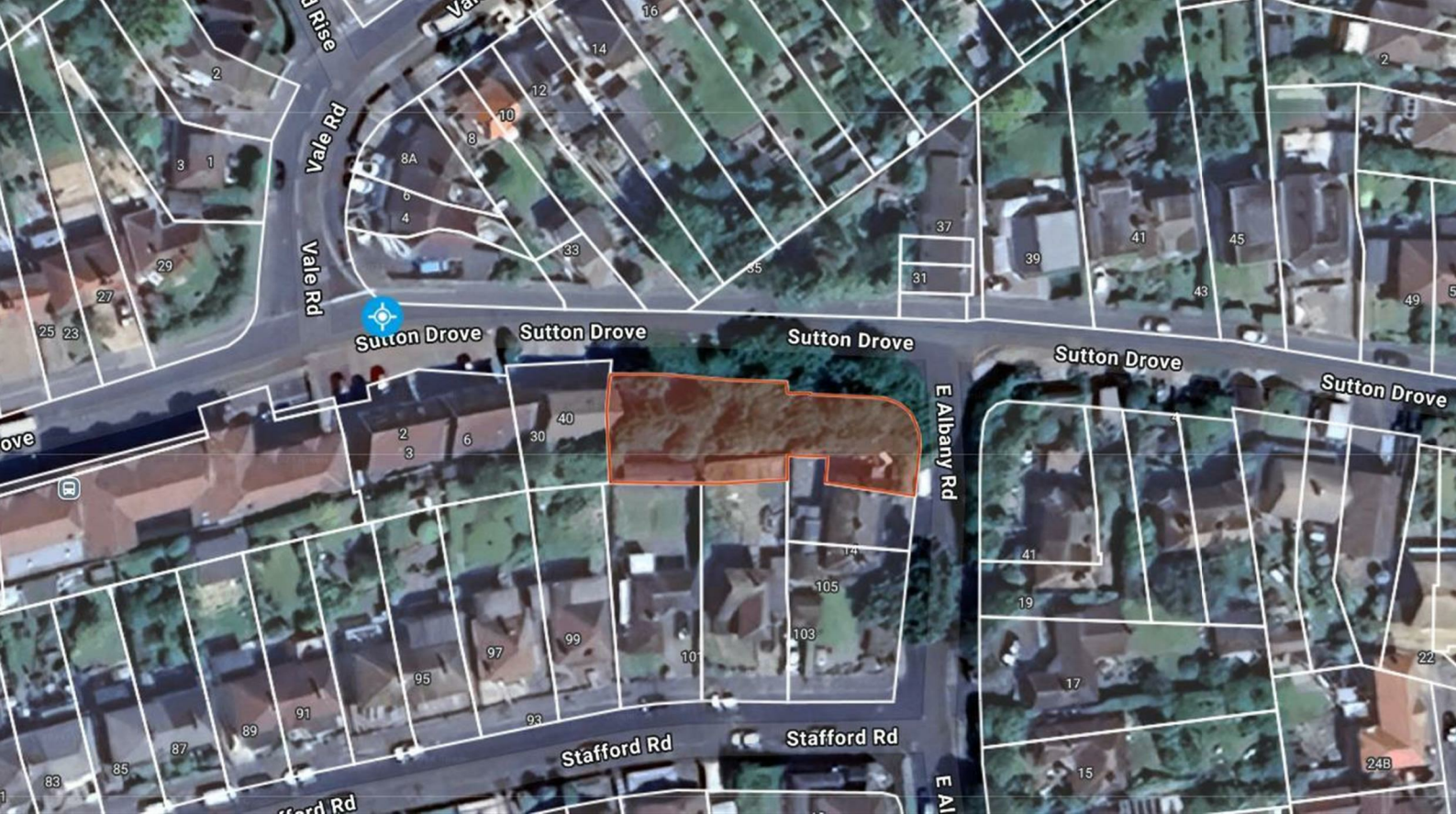
Price Guide £550,000

Freehold

phillipmann  
we do more

[www.phillipmann.com](http://www.phillipmann.com)





## inbrief...

Significant Joint Venture Opportunity  
Auction Guide £550,000+  
Planning Permission Approved For 9 Flats

JOINT VENTURE FULLY AVAILABLE ON TERMS TO BE AGREED

Vacant site with planning permission granted on 7th August 2024 for 9 self contained flats with parking spaces that will comprise of

4 x 1 bedroom flats (Each With Additional Guest Room/Study)  
3 x 2 bedroom flats  
2 x 3 bedroom flats

For full details of the planning permission granted and to view all of the relevant plans, drawings and documents, please visit

and use the planning reference number of 24/0220 in the search box.

Located within this popular and sought after residential location of Seaford providing easy access to Brighton & Hove, Eastbourne and Lewes together with other parts of the Sussex Countryside. Just at the bottom of Sutton Drove is a recreational area with its own pond.

PLEASE NOTE THE OUTLINE OF THE SITE AS SHOWN IS FOR IDENTIFICATION PURPOSES ONLY AND IS NOT TO BE RELIED UPON.

## moreinfo...

Phillip Mann Seaford Office  
1-3 Dane Road, Seaford, East Sussex, BN25 1LG  
01323 898666

To see more details on this & all our homes go to  
[www.phillipmann.com](http://www.phillipmann.com)

