

2
BED

A Modern Semi-Detached House

7, Barn Close, Seaford, BN25 3EW



Price £325,000

Freehold

phillipmann
we do more

www.phillipmann.com



inbrief...

Phillip Mann estate agents are delighted to offer for sale this well presented, 2 bedroom semi-detached family home. Situated in a quiet close, near local shops, buses, schools and countryside walks. The property benefits from gas central heating, double glazing, a good size sunny rear garden, off road parking and a garage.

The entrance has laminate flooring, a radiator, and a cupboard housing a modern boiler and consumer unit. The living room is a good size room with a radiator, T.V point and a window and door to the rear garden.

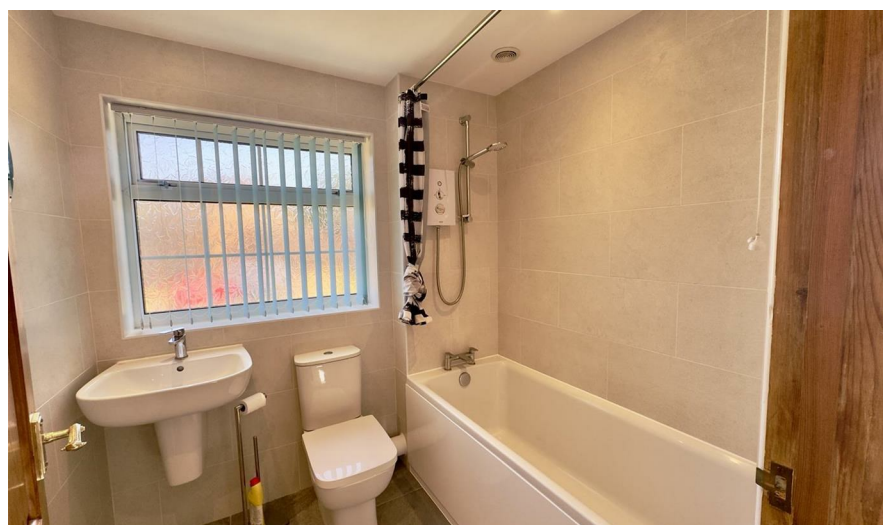
The kitchen has been fitted with a good range of wall and base units comprising an inset sink and drainer with mixer taps, there is plumbing and space below for a washing machine, a dishwasher, a built in electric oven, four ring gas hob with hood above, further space for an upright fridge freezer, tiled walls and a window to the front.

There are stairs to the first floor with access to the loft and an airing cupboard housing a hot water tank. The two bedrooms are good size rooms; the main bedroom has a radiator, built in wardrobes and a window to the rear. The second bedroom has a radiator and overlooks the front.

The bathroom has been fitted with a white suite comprising a panel bath with mixer taps and an electric shower over, a close coupled w/c and wall mounted wash hand basin, a radiator, tiled walls and flooring and a window to the front.

Outside there is a good size, sunny rear garden with a large paved patio area, a level lawn and stocked borders, a timber garden shed and side access.

The front garden is open plan with a lawn area and off road parking and access to the garage with an up and over door to the front and side courtesy door.



Council Tax Band: C

Energy Rating: C

moreinfo...



Phillip Mann Seaford Office
1-3 Dane Road, Seaford, East Sussex, BN25 1LG
01323 898666

To see more details on this & all our homes go to
www.phillipmann.com