

1
BED

Ground Floor Seafront Retirement Flat

2, Merryfield Court, Seaford, BN25 2PN



Price £150,000

Leasehold

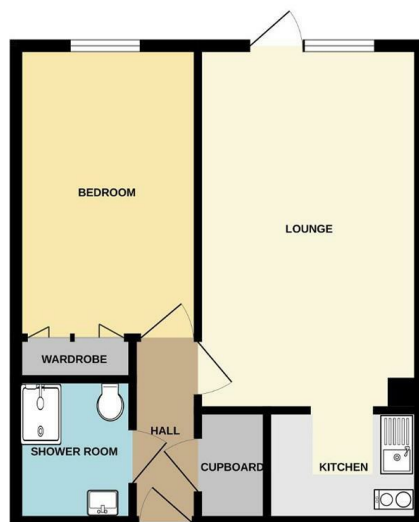
phillipmann
we do more

www.phillipmann.com

- Seafront location with direct beach access
- Onsite manager (weekdays)
- 24-hour Careline emergency system
- Residents' lounge, communal gardens, and patio areas
- Guest suite for visitors (available at additional cost)
- Lift and stairs to all floors
- Secure entry phone system & CCTV security
- Communal laundry room
- Communal parking

Energy Rating: C

GROUND FLOOR
431 sq.ft. (40.0 sq.m.) approx.



TOTAL FLOOR AREA: 431 sq.ft. (40.0 sq.m.) approx.

Whilst every attempt has been made to ensure the accuracy of the floorplan contained here, measurements of doors, windows, rooms and any other items are approximate and no responsibility is taken for any error, distortion or mis-statement. This plan is for illustrative purposes only and should be used as such by any prospective purchaser. The services, systems and appliances shown have not been tested and no guarantee as to their operability or efficiency can be given.

Made with Metapex C5023



moreinfo...



Phillip Mann Seafood Office
1-3 Dane Road, Seafood, East Sussex, BN25 1LG
01323 898666

To see more details on this & all our homes go to
www.phillipmann.com