

3
BED

Close to Seafront & Town Centre

51, Cricketfield Road, Seaford, BN25 1BU



Price £325,000

Freehold

phillipmann
we do more

www.phillipmann.com



inbrief...

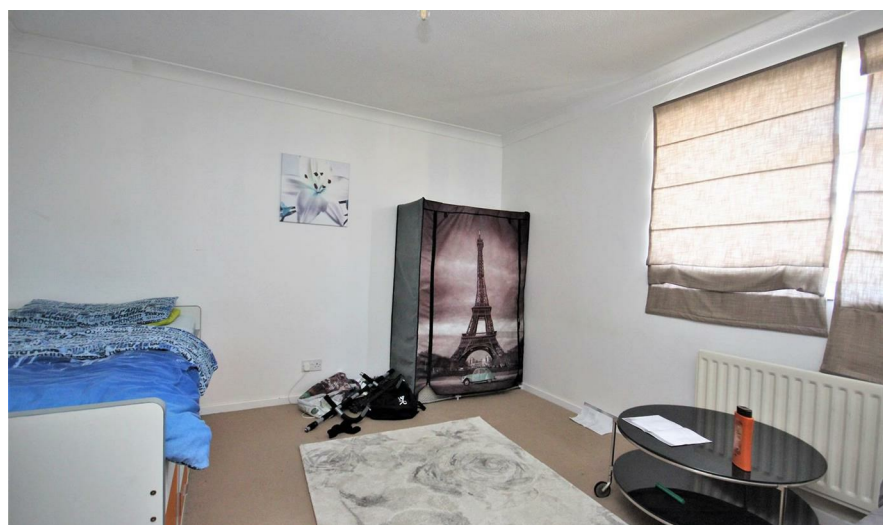
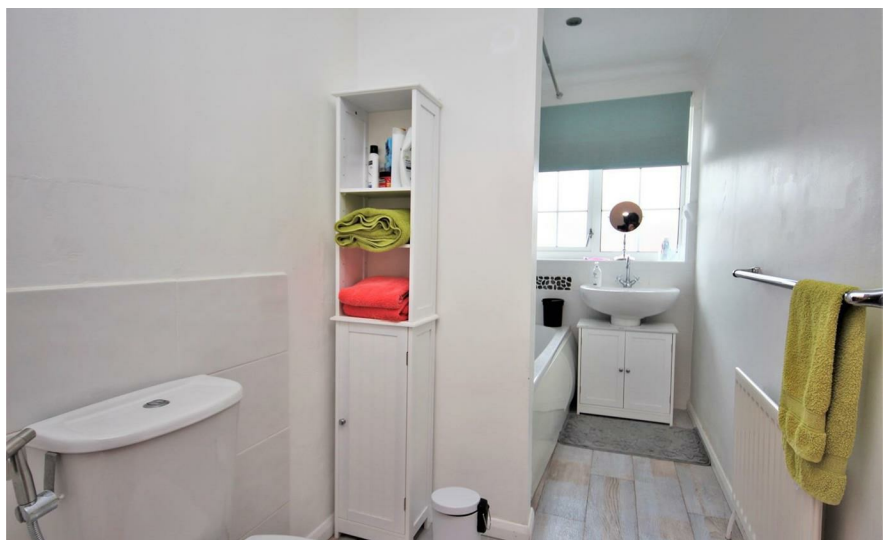
A spacious three bedroom terraced house ideally situated approx 200 yards from Seaford seafront and within easy walking distance of the town centre, station, schools and countryside. Greatly improved by the current owners features include a refitted kitchen, bathroom and ground floor cloakroom, gas central heating, double glazing, garage and parking.

The entrance has a double glazed front door and the cloakroom has been re-fitted with a w/c, mini basin and extractor fan. The L-shaped lounge/dining room - 17'7 max x 13'8 max narrowing to 9'6 - is light and airy with double glazed patio doors onto the rear garden. The kitchen - 11'5 x 6'3 - has been refitted with a range of units comprising work surface with inset sink and cupboards and drawers below, inset four ring gas hob with electric oven below and filter hood above, space for washing machine, matching wall units, space for Fridge/freezer and window to front.

The first floor landing has access to the loft space and an airing cupboard with Worcester boiler. Bedroom one - 13'5 x 8'7 - has built in wardrobes and window to rear with views towards Corsica hall and Seaford Head. Bedroom two - 12'4 x 11'5 max has a window to front and bedroom three - 9'8 x 8'9 - also has views towards Corsica Hall and Seaford Head. The bathroom has been refitted with a bath with shower over, wash basin, low level w/c, part tiled walls and frosted window.

The Rear garden has views of Corsica Hall and has a patio, lawn, shrubbery and outside tap. The integral garage - 16' x 8' has power and light and the driveway provides parking for one car.

VACANT POSSESSION



Energy Rating - D

Council Tax Band - D

moreinfo...

Phillip Mann Seaford Office
1-3 Dane Road, Seaford, East Sussex, BN25 1LG
01323 898666

To see more details on this & all our homes go to
www.phillipmann.com

