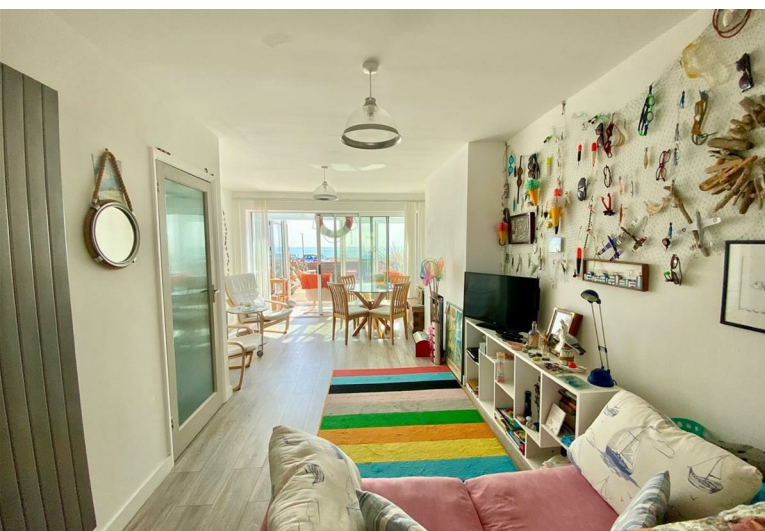


3
BED

A Terraced Seafront Residence

3, Marine Parade, Seaford, BN25 2PL



Price £450,000

Freehold

phillipmann
we do more

www.phillipmann.com

Marine Parade, Seaford, BN25

Approximate Area = 1323 sq ft / 122.9 sq m

For identification only - Not to scale



inbrief...

Phillip Mann estate agents are delighted to offer for sale this well presented 3 bedroom seafront property. The property offers good size accommodation throughout, arranged over three floors and benefits from unrivalled sea views!

The entrance has a uPVC door leading to a hallway with a radiator, tiled flooring and a window to the front.

On the lower ground floor there is a large store room or additional bedroom, with a radiator, an understairs cupboard, laminate flooring and a door and a window to the front.

The downstairs bedroom has a radiator, a storage cupboard and a window to the front. The shower room has been fitted with an enclosed shower with an electric shower over, close coupled w/c, a wash hand basin set into a vanity unit, a heated ladder towel rail and an extractor fan.

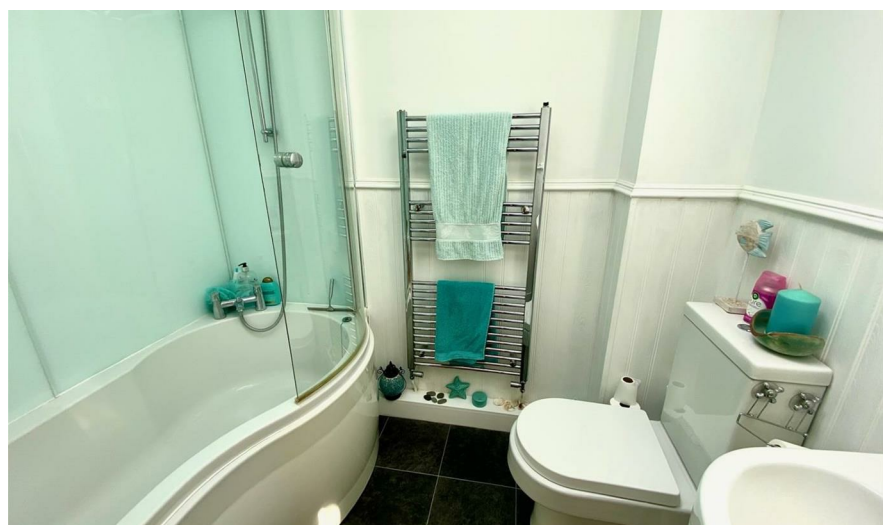
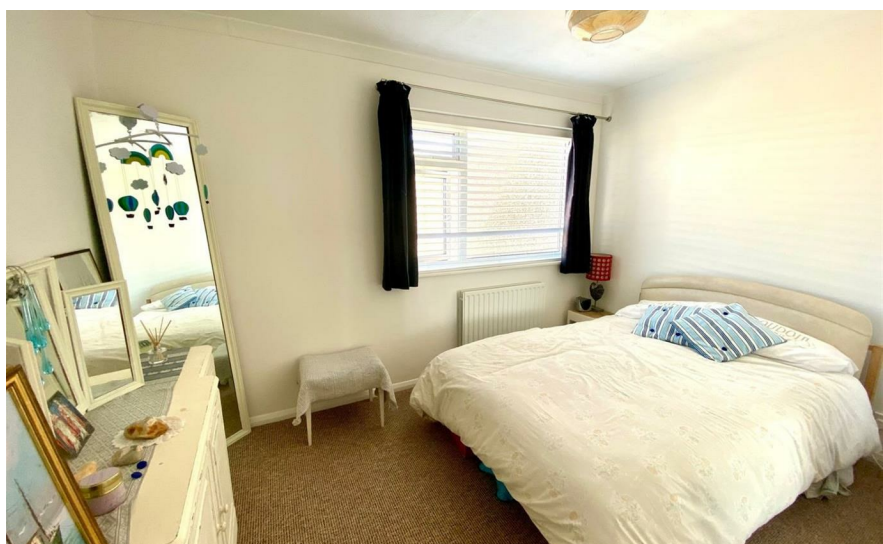
There are stairs to the first floor which leads to an open plan living living area. The living room has a bright and spacious feel with a decorative fireplace, a window to the side and doors to the front leading to a sun room with stunning sea views.

The kitchen has been fitted with a good range of wall and base units comprising a stainless steel sink and drainer unit set into the working surface, there is an integral washing machine, dishwasher, built in electric oven and induction hob, space for an upright fridge freezer, a radiator and a window to the rear.

There are stairs to the second floor landing. There are two double bedrooms; the main bedroom has built in wardrobes, a window to the side and a window to the front with stunning sea views.

The second bedroom is a large double room with a built in storage cupboard and overlooks the rear. The bathroom has been fitted with a white suite comprising a 'P' shaped bath with mixer taps and shower attachment, a close coupled w/c, pedestal wash hand basin, heated ladder towel rail and opening roof light.

Outside there is parking, a low maintenance garden with a decked area, stunning sea views and easy access to the beach.



Council Tax Band: C

Energy Rating: D

moreinfo...



Phillip Mann Seaford Office
1-3 Dane Road, Seaford, East Sussex, BN25 1LG
01323 898666

To see more details on this & all our homes go to
www.phillipmann.com