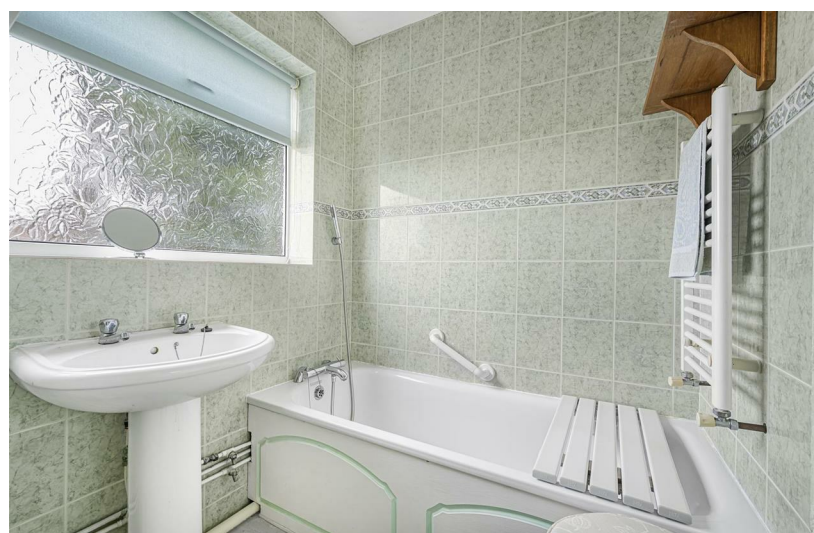


2
BED

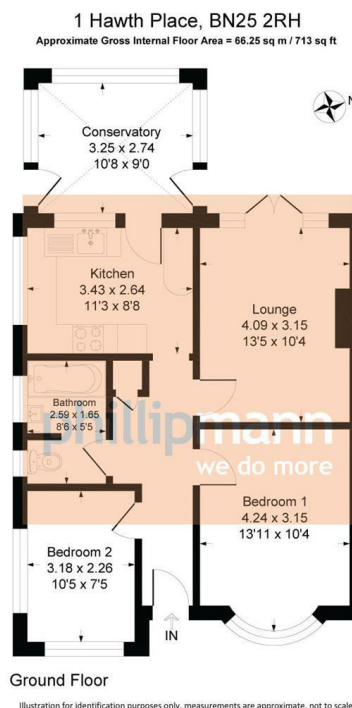
No On-Going Chain
1, Hawth Place, Seaford, BN25 2RH



£300,000
Freehold

phillipmann
we do more

www.phillipmann.com



inbrief...

This semi-detached bungalow is located in the popular Hawth Park area of Bishopstone and is within a short walk to a regular local bus service into Seaford town and a 10 minute walk to Seaford beach and Esplanade along with Bishopstone train station having links to Gatwick/London Victoria.

The property is offered with vacant possession and although will need some updating it benefits from gas central heating and double glazed windows.

As you approach the property there is a garage in compound with parking space. A path and steps bordered by an area of lawn lead to the front entrance.

The entrance hall has loft access with drop down ladder and an airing cupboard. The bedrooms are at the front of the property with bedroom one having a bay window with elevated southerly aspect, whilst the second bedroom has a dual aspect.

The lounge is at the rear of the bungalow and has an outlook over the rear garden with double doors giving access.

Adjacent to this is the kitchen which has a range of wall and base cupboards and work surface with breakfast bar. There is an inset sink, space for cooker, washing machine and fridge/freezer. The central heating boiler is a modern 'Worcester', there are dual aspect windows and connecting door to the conservatory, which has a pleasant outlook over the rear garden and doors giving access.

Off the entrance hall the bathroom comprises a bath, pedestal wash basin and WC.

Outside the rear garden extends to two sides of the bungalow and has an area of lawn with flower borders, there is a shed, gated side access and elevated views over the surrounding area.



Energy Rating - D

Council Tax Band - C

moreinfo...



Phillip Mann Seaford Office
1-3 Dane Road, Seaford, East Sussex, BN25 1LG
01323 898666

To see more details on this & all our homes go to
www.phillipmann.com